

Indices of Deprivation 2007- LSOA analysis

A statistical overview of the most deprived LSOAs in Oxfordshire

12 Oxfordshire LSOAs are ranked in the 20% most deprived areas in England. This report identifies where each of the 12 LSOAs are ranked by domain.

Introduction

The Indices of Deprivation 2007 (ID 2007) is a Lower layer Super Output Area (LSOA) measure of deprivation, and is made up of seven domain indices. There are also two supplementary indices (Income Deprivation Affecting Children and Income Deprivation Affecting Older People).

Summary measures of the ID 2007 are presented at local authority district level and county council level.

The ID 2007 are based on the approach, structure and methodology that were used to create the previous ID 2004. The ID 2007 updates the 2004 indices using more up-to date data.

The new Index contains seven domains which relate to;

- income deprivation
- employment deprivation
- health deprivation and disability
- education skills and training deprivation
- barriers to housing and services
- living environment deprivation
- crime

Where possible the indicators relate to 2005 and, as has been indicated, the ID 2007 and component domains are presented at LSOA level. Summaries of the ID 2007 are presented at district and county council levels.

Denominators at LSOA level for 2005 were provided by the Office for National Statistics' Small Area Population Estimation Unit. For the few indicators where numerators were derived from the 2001 Census, the denominators were also drawn from the Census.

For further information on the data derived to feed the component domains, see the ID 2007 summary document available on the [Communities and Local Government](#) website.

For further information visit the [Oxfordshire Data Observatory website](#)
or contact Peter Frobisher on 01865 815483
Email: peter.frobisher@oxfordshire.gov.uk

Overall rank

Rank 1= most deprived SOA in England
 Rank 32,482 = least deprived SOA in England
There are 404 SOAs in Oxfordshire

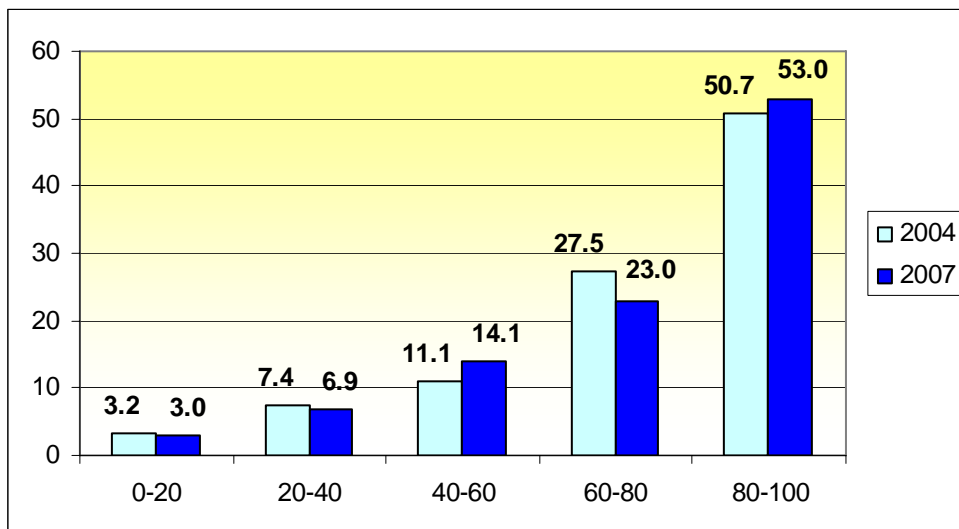
In the overall ID domain twelve Oxfordshire SOAs fall within the 20% most deprived areas nationally, compared to thirteen in 2004.

- Around 3% of Oxfordshire SOAs are in the 20% most deprived areas in England.

Table 1: Number and rate of Oxfordshire SOAs in national percentiles

Percentile ranges	2004		2007	
	No. of Oxon SOAs	% of Oxfordshire SOAs within quintiles	No. of Oxon SOAs	% of Oxfordshire SOAs within quintiles
0-20	13	3.22	12	2.97
20-40	30	7.43	28	6.93
40-60	45	11.14	57	14.11
60-80	111	27.48	93	23.02
80-100	205	50.74	214	52.97

Figure 1: Rate of Oxfordshire SOAs within national percentiles



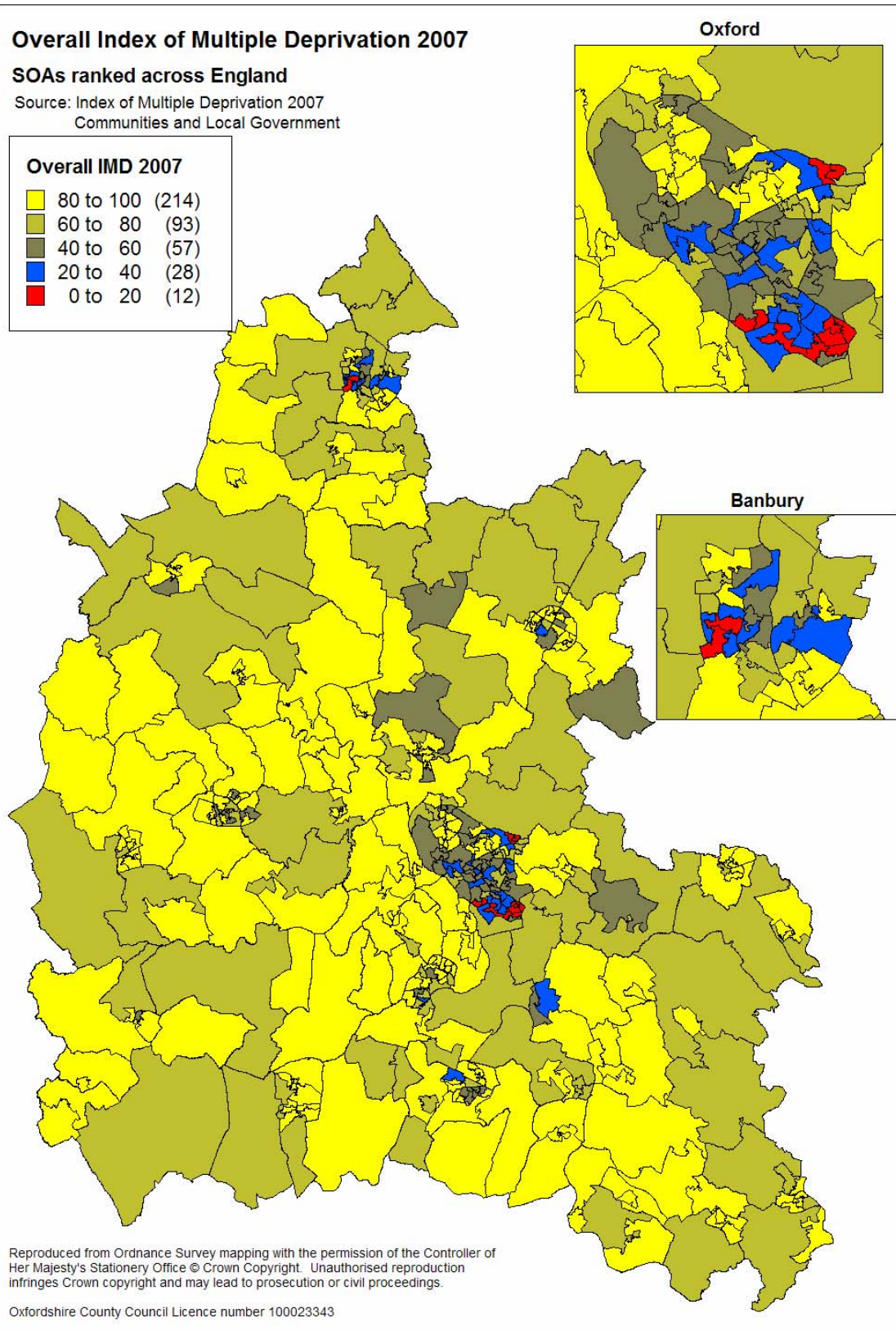
No Oxfordshire SOAs are present in the 10% most deprived areas in England, but twelve are in the top fifth.

- Ten of the SOAs are in Oxford City and two are in Cherwell.
- The number of SOAs in Banbury has reduced from three in 2004 to two in 2007.

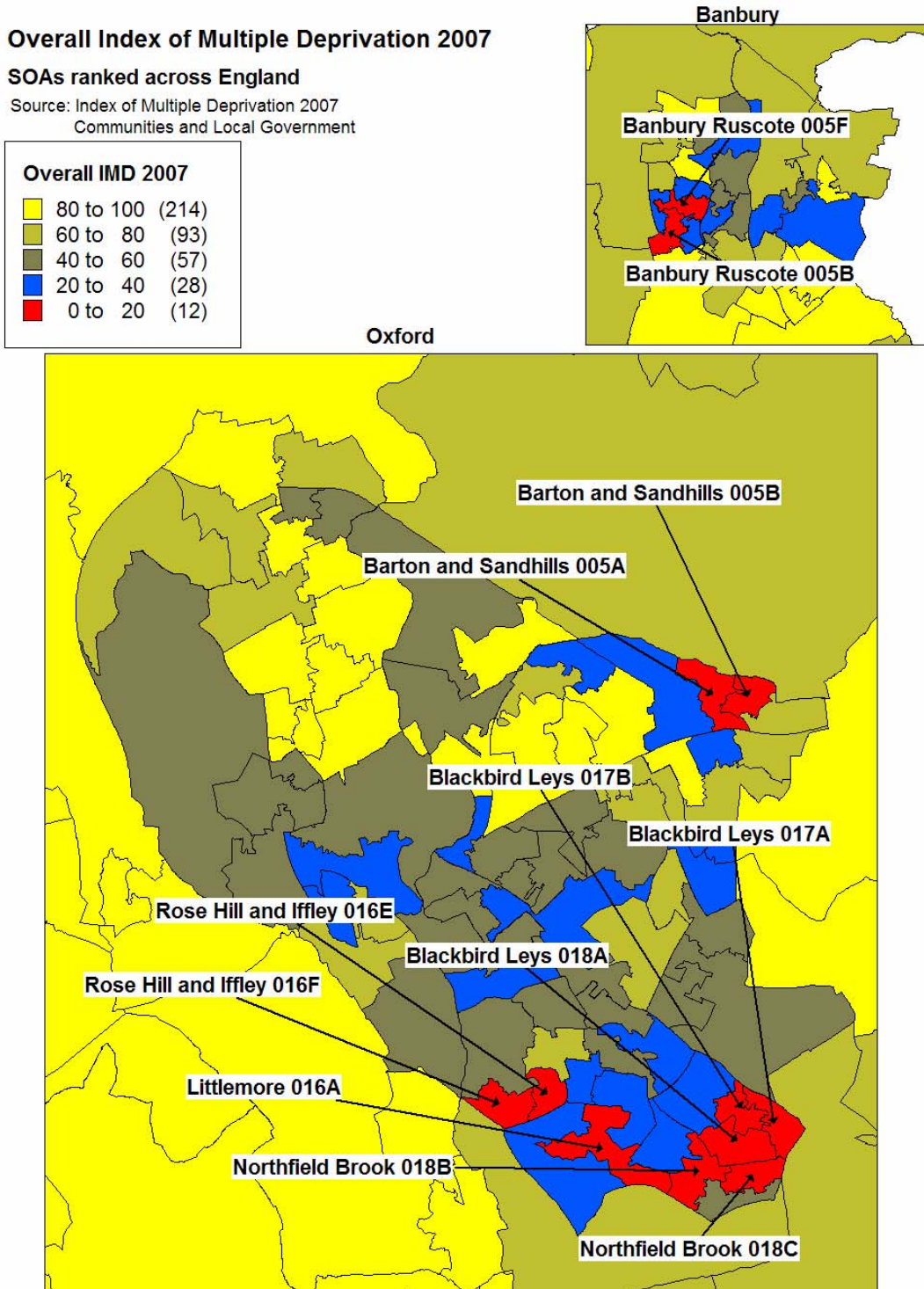
Table 2: Oxfordshire SOAs within the 20% most deprived areas nationally

Rank	SOA name	LA name	Rank	% rank nationally
1	Northfield Brook 018B	Oxford	3,707	11.41
2	Barton and Sandhills 005A	Oxford	4,021	12.38
3	Barton and Sandhills 005B	Oxford	4,332	13.34
4	Blackbird Leys 018A	Oxford	4,580	14.10
5	Northfield Brook 018C	Oxford	4,630	14.25
6	Banbury Ruscote 005B	Cherwell	5,431	16.72
7	Banbury Ruscote 005F	Cherwell	5,472	16.85
8	Blackbird Leys 017B	Oxford	5,571	17.15
9	Rose Hill and Iffley 016E	Oxford	5,616	17.29
10	Rose Hill and Iffley 016F	Oxford	5,744	17.68
11	Littlemore 016A	Oxford	6,114	18.82
12	Blackbird Leys 017A	Oxford	6,280	19.33

Map 1: Overall deprivation- Oxfordshire SOAs ranked across England, 2007



Map 2: Overall deprivation- Oxfordshire SOAs ranked within the 20% most deprived areas across England



Reproduced from Ordnance Survey mapping with the permission of the Controller of Her Majesty's Stationery Office © Crown Copyright. Unauthorised reproduction infringes Crown copyright and may lead to prosecution or civil proceedings.

Maps not to scale

Oxfordshire County Council Licence number 100023343

Northfield Brook 018B

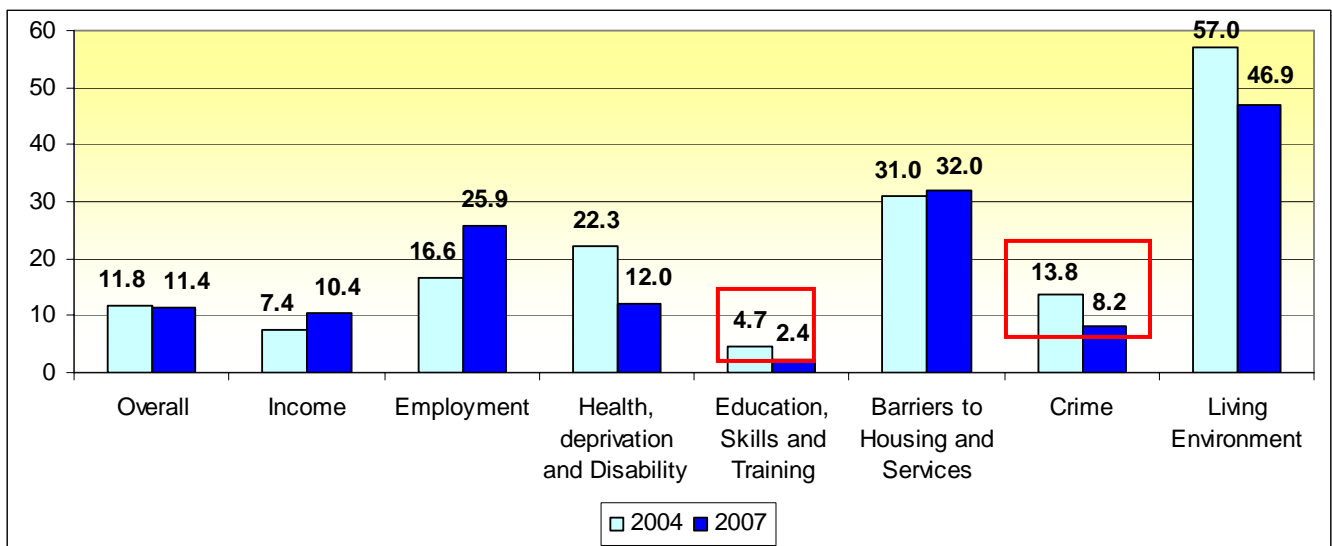
Ranked as the most deprived SOA in Oxfordshire, Northfield Brook 018B has 2 domains which are ranked in the most deprived 10% of areas in England- Education, Skills and Training (2.4%) and Crime (8.2%).

- Four of the seven domains are positioned in the most deprived 20% of areas nationally

Table 3: Domain analysis of Northfield Brook 018B (2004 and 2007)

Domain	2004		2007	
	Rank	%Rank nationally	Rank	%Rank nationally
Overall	3,849	11.85	3,707	11.41
Income	2,399	7.39	3,380	10.41
Employment	5,406	16.64	8,410	25.89
Health, deprivation and Disability	7,234	22.27	3,890	11.98
Education, Skills and Training	1,535	4.73	792	2.44
Barriers to Housing and Services	10,083	31.04	10,385	31.97
Crime	4,489	13.82	2,667	8.21
Living Environment	18,500	56.95	15,245	46.93

Figure 2: Domain analysis of Northfield Brook 018B (2004 and 2007)



Barton and Sandhills 005A

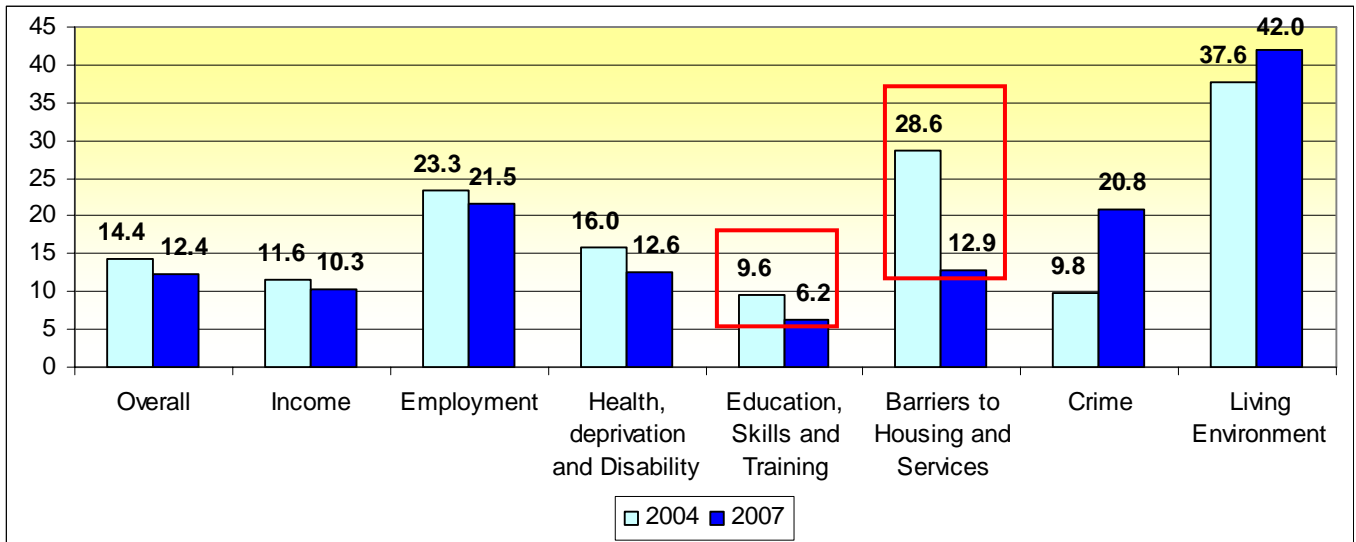
Educations, Skills and Training is the only domain where Barton and Sandhills 005A falls within the 10% most deprived areas nationally.

- Domains in the 20% most deprived areas nationally include Income, Health, deprivation and Disability and Barriers to Housing and Services.

Table 4: Domain analysis of Barton and Sandhills 005A (2004 and 2007)

Domain	2004		2007	
	Rank	%Rank nationally	Rank	%Rank nationally
Overall	4,666	14.36	4,021	12.38
Income	3,755	11.56	3,350	10.31
Employment	7,574	23.32	6,994	21.53
Health, deprivation and Disability	5,184	15.96	4,087	12.58
Education, Skills and Training	3,104	9.56	2,010	6.19
Barriers to Housing and Services	9,300	28.63	4,205	12.95
Crime	3,191	9.82	6,750	20.78
Living Environment	12,227	37.64	13,632	41.97

Figure 3: Domain analysis of Barton and Sandhills 005A (2004 and 2007)



Barton and Sandhills 005B

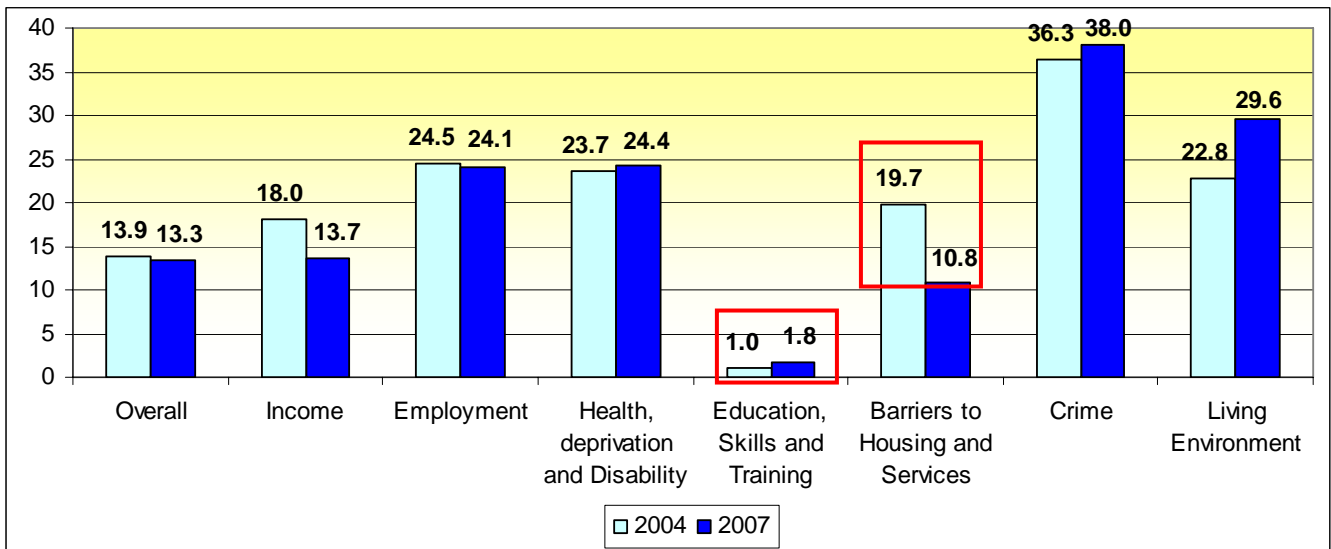
Educations, Skills and Training is the only domain where Barton and Sandhills 005B falls within the 10% most deprived areas nationally.

- Further domains in the 20% most deprived areas in England include Income and Barriers to Housing and Services

Table 5: Domain analysis of Barton and Sandhills 005B (2004 and 2007)

Domain	2004		2007	
	Rank	%Rank nationally	Rank	%Rank nationally
Overall	4,511	13.89	4,332	13.34
Income	5,860	18.04	4,438	13.66
Employment	7,955	24.49	7,819	24.07
Health, deprivation and Disability	7,690	23.67	7,911	24.36
Education, Skills and Training	330	1.02	569	1.75
Barriers to Housing and Services	6,407	19.72	3,524	10.85
Crime	11,785	36.28	12,342	38.00
Living Environment	7,406	22.80	9,623	29.63

Figure 4: Domain analysis of Barton and Sandhills 005B (2004 and 2007)



Blackbird Leys 018A

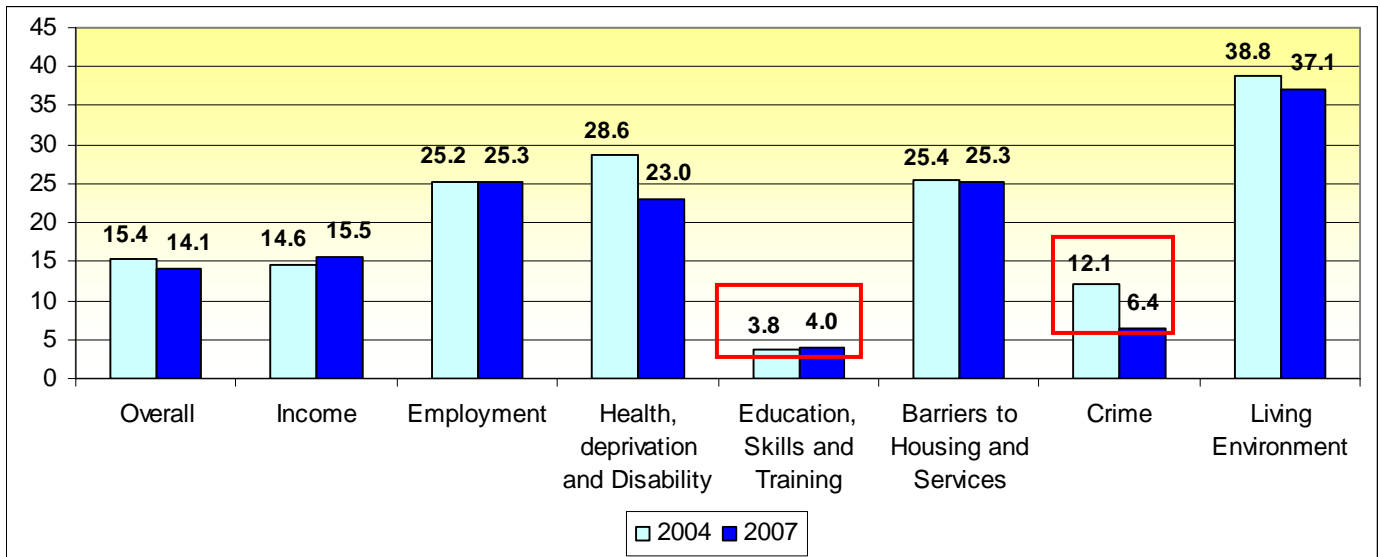
Educations, Skills and Training and Crime are the domains where Blackbird Leys 018A falls within the most deprived 10% of the England.

- Blackbird Leys 018A also ranks in the most deprived 20% of areas nationally on the Income domain

Table 6: Domain analysis of Blackbird Leys 018A (2004 and 2007)

Domain	2004		2007	
	Rank	%Rank nationally	Rank	%Rank nationally
Overall	5,002	15.40	4,580	14.10
Income	4,749	14.62	5,031	15.49
Employment	8,175	25.17	8,227	25.33
Health, deprivation and Disability	9,287	28.59	7,464	22.98
Education, Skills and Training	1,230	3.79	1,291	3.97
Barriers to Housing and Services	8,266	25.45	8,213	25.28
Crime	3,919	12.07	2,095	6.45
Living Environment	12,616	38.84	12,047	37.09

Figure 5: Domain analysis of Blackbird Leys 018A (2004 and 2007)



Northfield Brook 018C

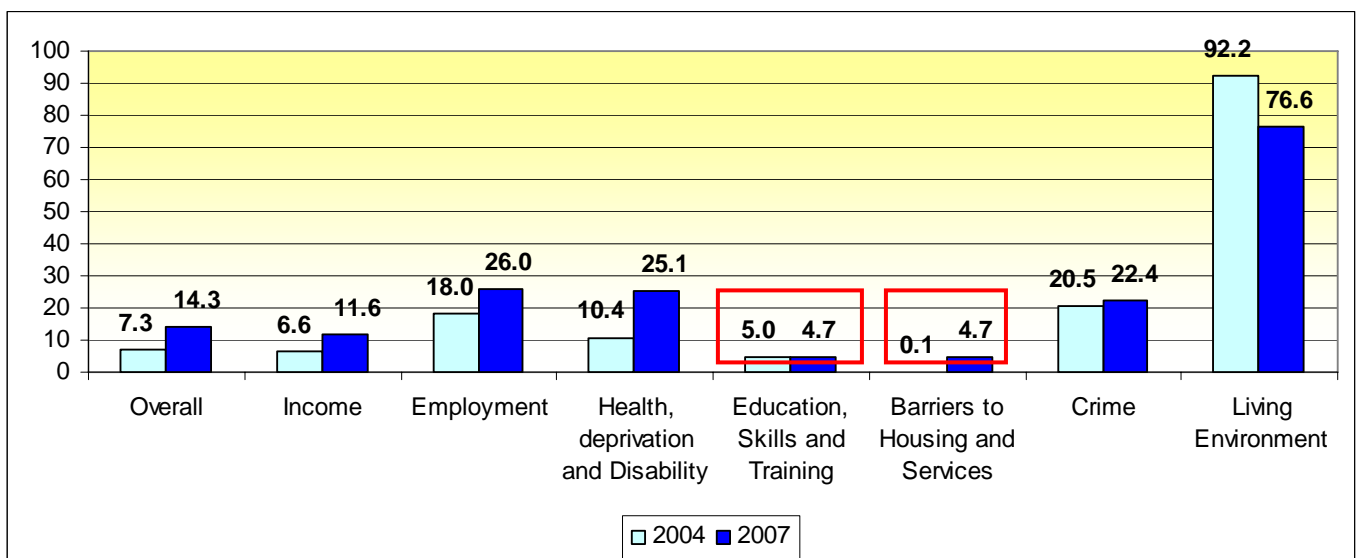
In 2007 Northfield Brook 018C had two domains ranked in the 5% most deprived nationally, compared to three in 2004.

- Northfield Brook 018C falls in the most deprived 5% of areas in England on Educations, Skills and Training and Barriers to Housing and Services.
- There's a significant improvement of the overall rank between 2004 and 2007.

Table 7: Domain analysis of Northfield Brook 018C (2004 and 2007)

Domain	2004		2007	
	Rank	%Rank nationally	Rank	%Rank nationally
Overall	2,365	7.28	4,630	14.25
Income	2,136	6.58	3,783	11.65
Employment	5,842	17.99	8,437	25.97
Health, deprivation and Disability	3,390	10.44	8,143	25.07
Education, Skills and Training	1,620	4.99	1,529	4.71
Barriers to Housing and Services	40	0.12	1,517	4.67
Crime	6,658	20.50	7,262	22.36
Living Environment	29,960	92.24	24,868	76.56

Figure 6: Domain analysis of Northfield Brook 018C (2004 and 2007)



Banbury Ruscote 005B

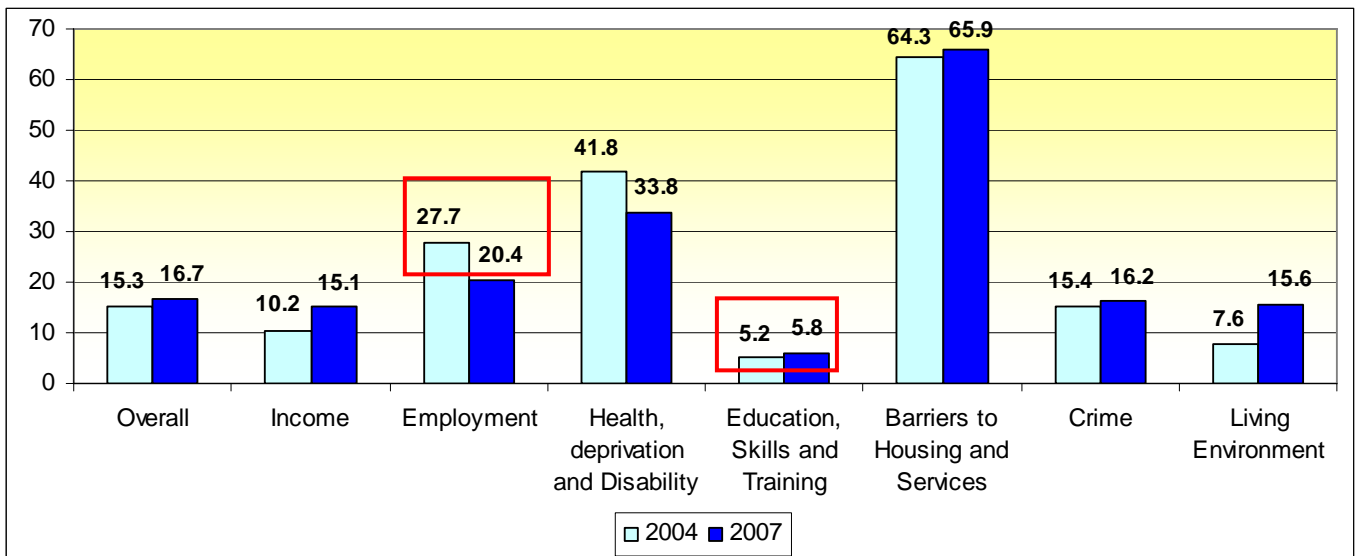
Banbury Ruscote 005B has one domain (Education, Training and Skills) ranked in the most deprived 10% nationally for 2007, compared to two in 2004.

- Banbury Ruscote 005B saw relative improvement in five of the seven domains between 2004 and 2007. The LSOA became relatively more deprived in the Health and Employment domains.

Table 8: Domain analysis of Banbury Ruscote 005B (2004 and 2007)

Domain	2004		2007	
	Rank	%Rank nationally	Rank	%Rank nationally
Overall	4,968	15.29	5,431	16.72
Income	3,326	10.24	4,889	15.05
Employment	8,997	27.70	6,632	20.42
Health, deprivation and Disability	13,586	41.83	10,972	33.78
Education, Skills and Training	1,705	5.25	1,899	5.85
Barriers to Housing and Services	20,873	64.26	21,411	65.92
Crime	4,990	15.36	5,255	16.18
Living Environment	2,480	7.63	5,078	15.63

Figure 7: Domain analysis of Banbury Ruscote 005B (2004 and 2007)



Banbury Ruscote 005F

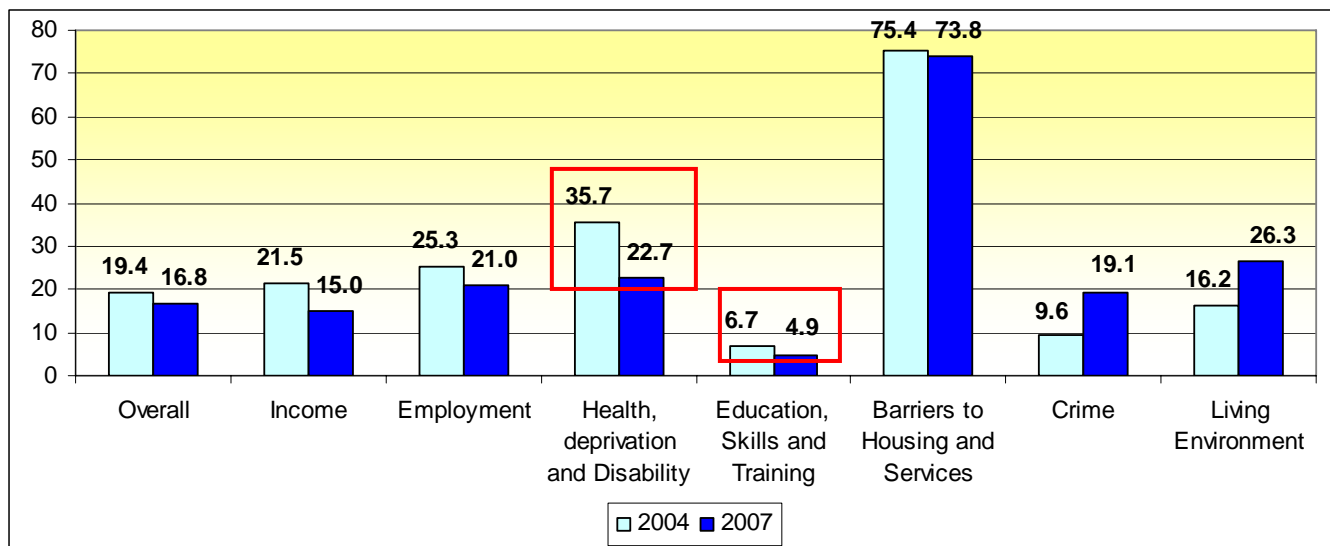
Education, Skills and Training in Banbury Ruscote 005F is ranked amongst the 5% most deprived areas.

- Crime and Living Environment are the only domains where relative improvement is recorded.

Table 9: Domain analysis of Banbury Ruscote 005F (2004 and 2007)

Domain	2004		2007	
	Rank	%Rank nationally	Rank	%Rank nationally
Overall	6,308	19.42	5,472	16.85
Income	6,986	21.51	4,886	15.04
Employment	8,225	25.32	6,822	21.00
Health, deprivation and Disability	11,590	35.68	7,368	22.68
Education, Skills and Training	2,166	6.67	1,594	4.91
Barriers to Housing and Services	24,504	75.44	23,973	73.80
Crime	3,125	9.62	6,192	19.06
Living Environment	5,252	16.17	8,558	26.35

Figure 8: Domain analysis of Banbury Ruscote 005F (2004 and 2007)



Blackbird Leys 017B

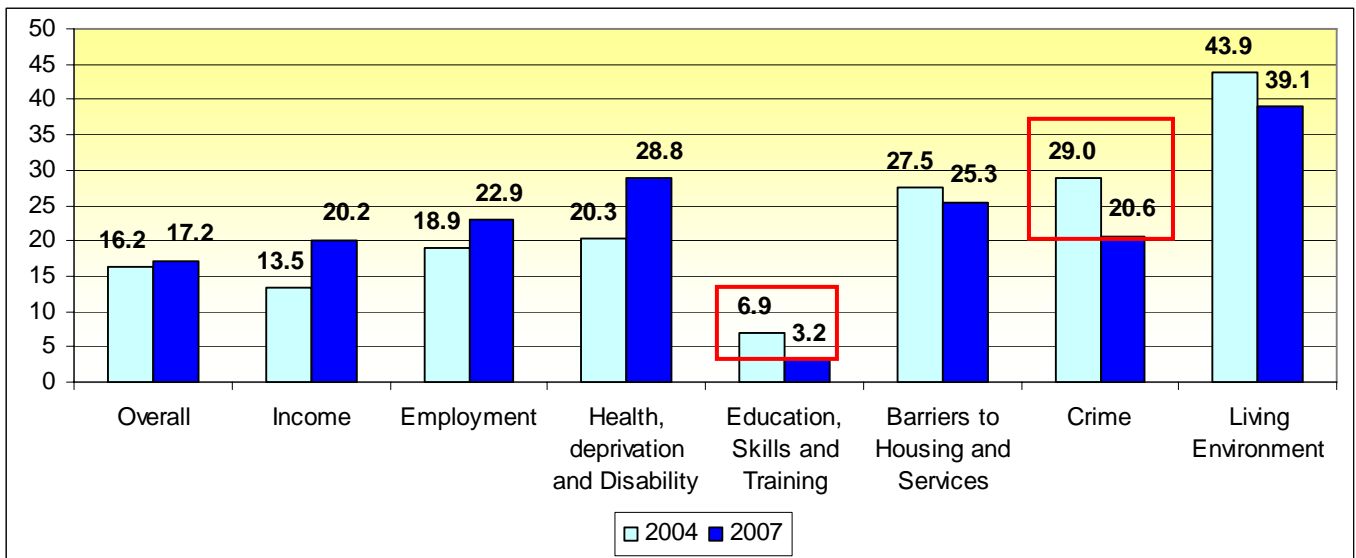
Blackbird Leys 017B is ranked in the 5% most deprived areas on Education, Skills and Training.

- Only the Education, Skills and Training domain is ranked in the 20% most deprived areas nationally,

Table 10: Domain analysis of Blackbird Leys 017B (2004 and 2007)

Domain	2004		2007	
	Rank	%Rank nationally	Rank	%Rank nationally
Overall	5,275	16.24	5,571	17.15
Income	4,385	13.50	6,557	20.19
Employment	6,150	18.93	7,436	22.89
Health, deprivation and Disability	6,603	20.33	9,339	28.75
Education, Skills and Training	2,252	6.93	1,033	3.18
Barriers to Housing and Services	8,925	27.48	8,224	25.32
Crime	9,423	29.01	6,697	20.62
Living Environment	14,274	43.94	12,693	39.08

Figure 9: Domain analysis of Blackbird Leys 017B (2004 and 2007)



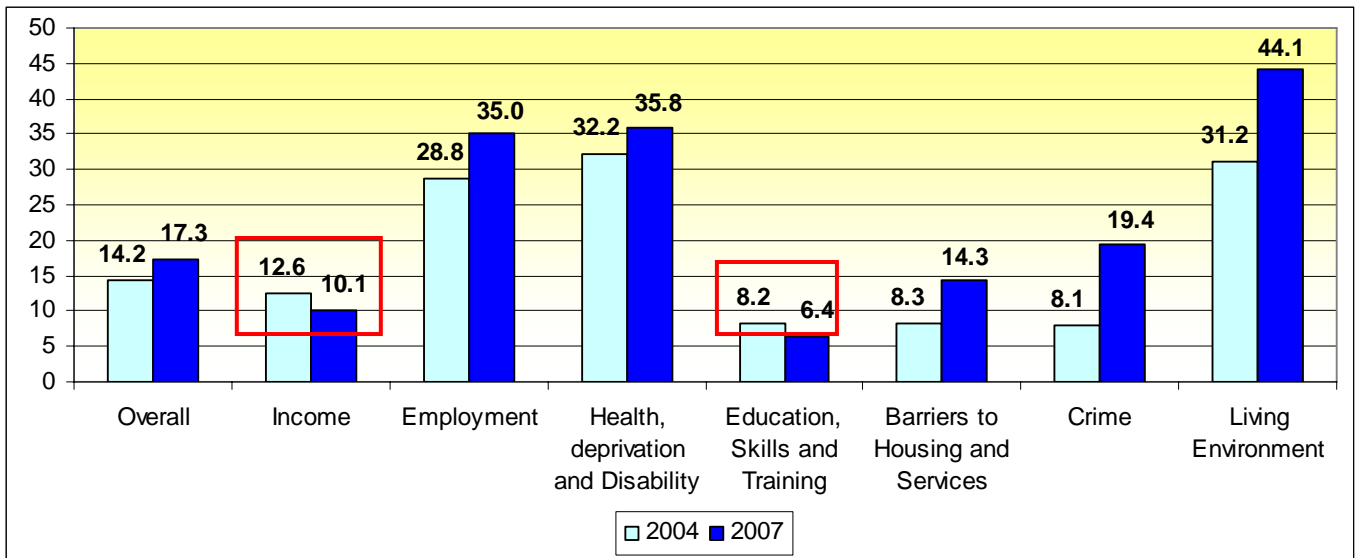
Rose Hill and Iffley 016E

Rose Hill and Iffley 016E has only Education, Skills and Training ranked in the most deprived 10% of areas in England, compared to Education, Housing and Crime in 2004.

Table 11: Domain analysis of Rose Hill and Iffley 016E (2004 and 2007)

Domain	2004		2007	
	Rank	%Rank nationally	Rank	%Rank nationally
Overall	4,626	14.24	5,616	17.29
Income	4,100	12.62	3,281	10.10
Employment	9,353	28.79	11,380	35.03
Health, deprivation and Disability	10,465	32.22	11,623	35.78
Education, Skills and Training	2,656	8.18	2,066	6.36
Barriers to Housing and Services	2,704	8.32	4,653	14.32
Crime	2,619	8.06	6,294	19.38
Living Environment	10,146	31.24	14,329	44.11

Figure 10: Domain analysis of Rose Hill and Iffley 016E (2004 and 2007)



Rose Hill and Iffley 016F

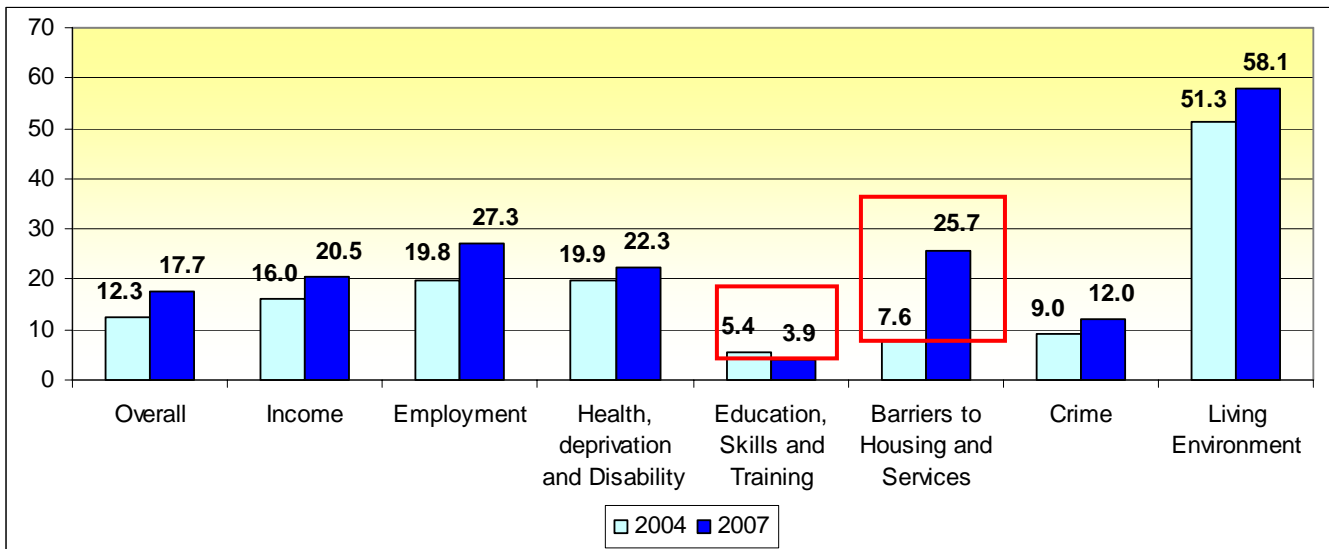
Rose Hill and Iffley 016F has improved overall from being ranked at 12.3% in 2004 to 17.7% in 2007.

- Rose Hill and Iffley 016F is ranked in the most deprived 5% of England on Education, Skills and Training.
- All domain rankings have improved since 2004, apart from Education, Skills and Training.

Table 12: Domain analysis of Rose Hill and Iffley 016F (2004 and 2007)

Domain	2004		2007	
	Rank	%Rank nationally	Rank	%Rank nationally
Overall	4,000	12.31	5,744	17.68
Income	5,205	16.02	6,645	20.46
Employment	6,421	19.77	8,867	27.30
Health, deprivation and Disability	6,448	19.85	7,237	22.28
Education, Skills and Training	1,739	5.35	1,281	3.94
Barriers to Housing and Services	2,469	7.60	8,350	25.71
Crime	2,919	8.99	3,897	12.00
Living Environment	16,664	51.30	18,861	58.07

Figure 11: Domain analysis of Rose Hill and Iffley 016F (2004 and 2007)



Littlemore 016A

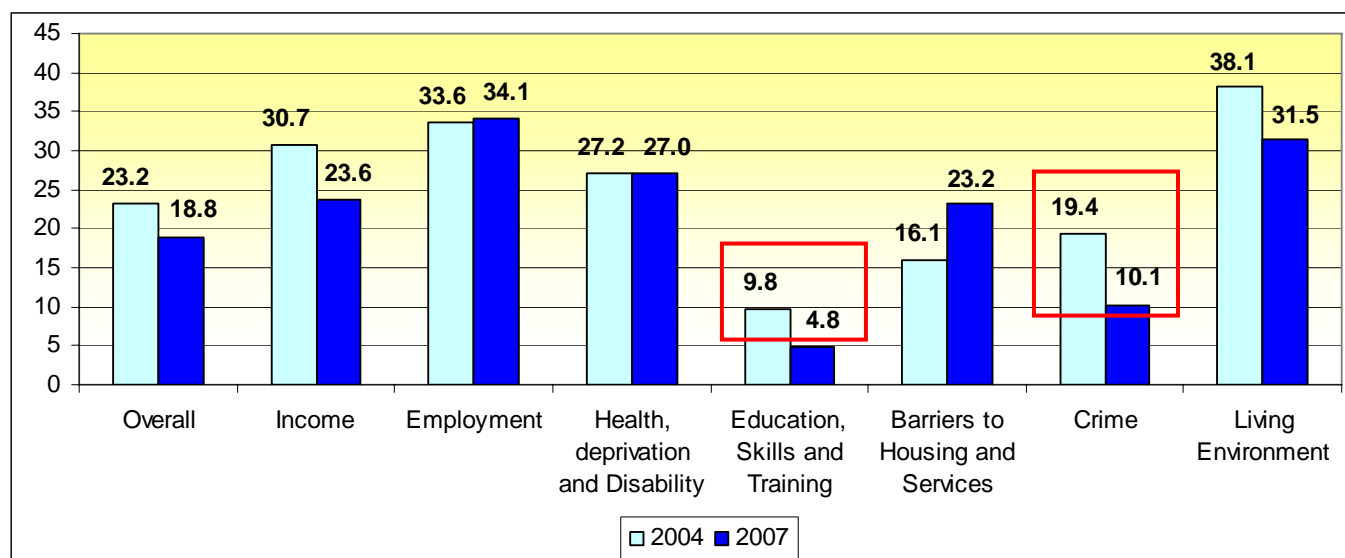
Littlemore 016A is ranked within the most deprived 5% areas nationally for Education, Skills and Training.

- Crime is the only other domain present in the 20% most deprived areas in England.
- Littlemore 016A was ranked outside the 20% most deprived areas overall in 2004.

Table 13: Domain analysis of Littlemore 016A (2004 and 2007)

Domain	2004		2007	
	Rank	%Rank nationally	Rank	%Rank nationally
Overall	7,529	23.18	6,114	18.82
Income	9,986	30.74	7,673	23.62
Employment	10,908	33.58	11,063	34.06
Health, deprivation and Disability	8,839	27.21	8,783	27.04
Education, Skills and Training	3,180	9.79	1,560	4.80
Barriers to Housing and Services	5,225	16.09	7,543	23.22
Crime	6,289	19.36	3,286	10.12
Living Environment	12,383	38.12	10,236	31.51

Figure 12: Domain analysis of Littlemore 016A (2004 and 2007)



Blackbird Leys 017A

Blackbird Leys 017A was not ranked within the 20% most deprived areas in 2004.

- In Blackbird Leys 017A both Barriers to Housing and Services and Education, Skills and Training are ranked within the 5% most deprived areas nationally in 2007.

Table 14: Domain analysis of Blackbird Leys 017A (2004 and 2007)

Domain	2004		2007	
	Rank	%Rank nationally	Rank	%Rank nationally
Overall	6,738	20.74	6,280	19.33
Income	6,635	20.43	8,693	26.76
Employment	13,505	41.58	12,336	37.98
Health, deprivation and Disability	14,034	43.21	14,474	44.56
Education, Skills and Training	1,731	5.33	1,066	3.28
Barriers to Housing and Services	735	2.26	811	2.50
Crime	9,759	30.04	5,441	16.75
Living Environment	25,574	78.73	23,118	71.17

Figure 13: Domain analysis of Blackbird Leys 017A (2004 and 2007)

