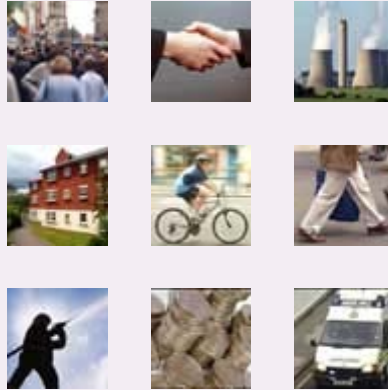


Welcome

From strategy to action – making things happen



Developing the vision

Oxfordshire's 'story of place'

**Claire Phillips
Partnership Officer**



This presentation

- Developing the Sustainable Community Strategy – the process

The Oxfordshire Partnership

- The over-arching strategic partnership for the county

Purpose:

- ensure county organisations work together effectively
- develop a VISION for the next 25-30 years (Sustainable Community Strategy)
- make sure we deliver outcomes that improve people's lives (e.g. Local Area Agreement Targets).



What is a Sustainable Community Strategy?

- Long term strategic vision for the county (20+ years)
- Describes what is important about Oxfordshire to Government and external agencies
- A Partnership plan
- Short/medium/long term targets
- Measure progress

Developing the strategy

- Evidence base
- Workshops – Implications for Oxfordshire
- Overview workshops – issues and options for the strategy
- Consultation on the issues and options
- Partnership agreed the priorities for the strategy
- Drafting strategy
- Consultation on the draft strategy

A moment to reflect...

- What were you doing 20 years ago? What was Oxfordshire like then?
- What would you want Oxfordshire to be like in 20-30 years time?

Evidence & issues gathered by theme

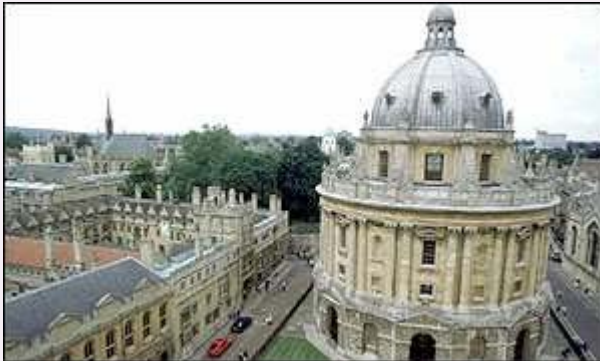
- Spatial Oxfordshire
- Population & Migration
- Economy
- Housing
- Children & Young People
- Community Life
- Health, Care & Well-being
- Learning & Skills
- Transport
- Environment
- Recreation, Leisure & Culture
- Community Safety

Summary of the evidence

- Evidence informing the development of the SCS
- Trends affecting the future of Oxfordshire
 - Demographic change
 - The economy
 - Environmental pressures
 - People and communities

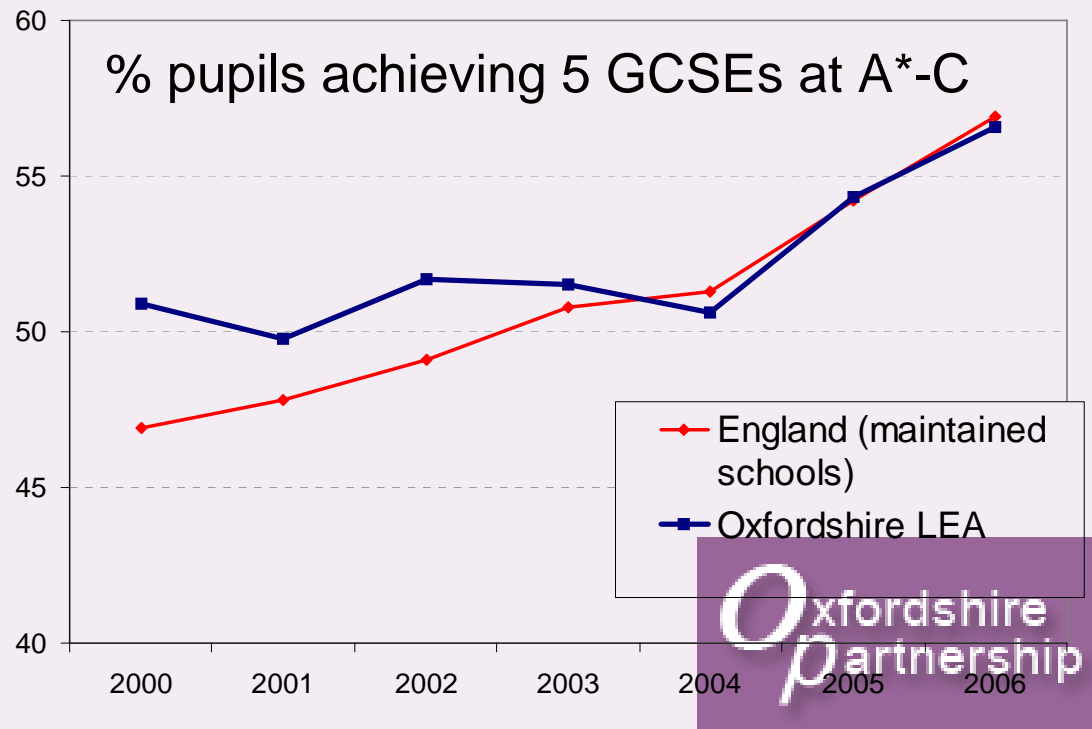


A World Class Economy



Skills levels a concern to businesses

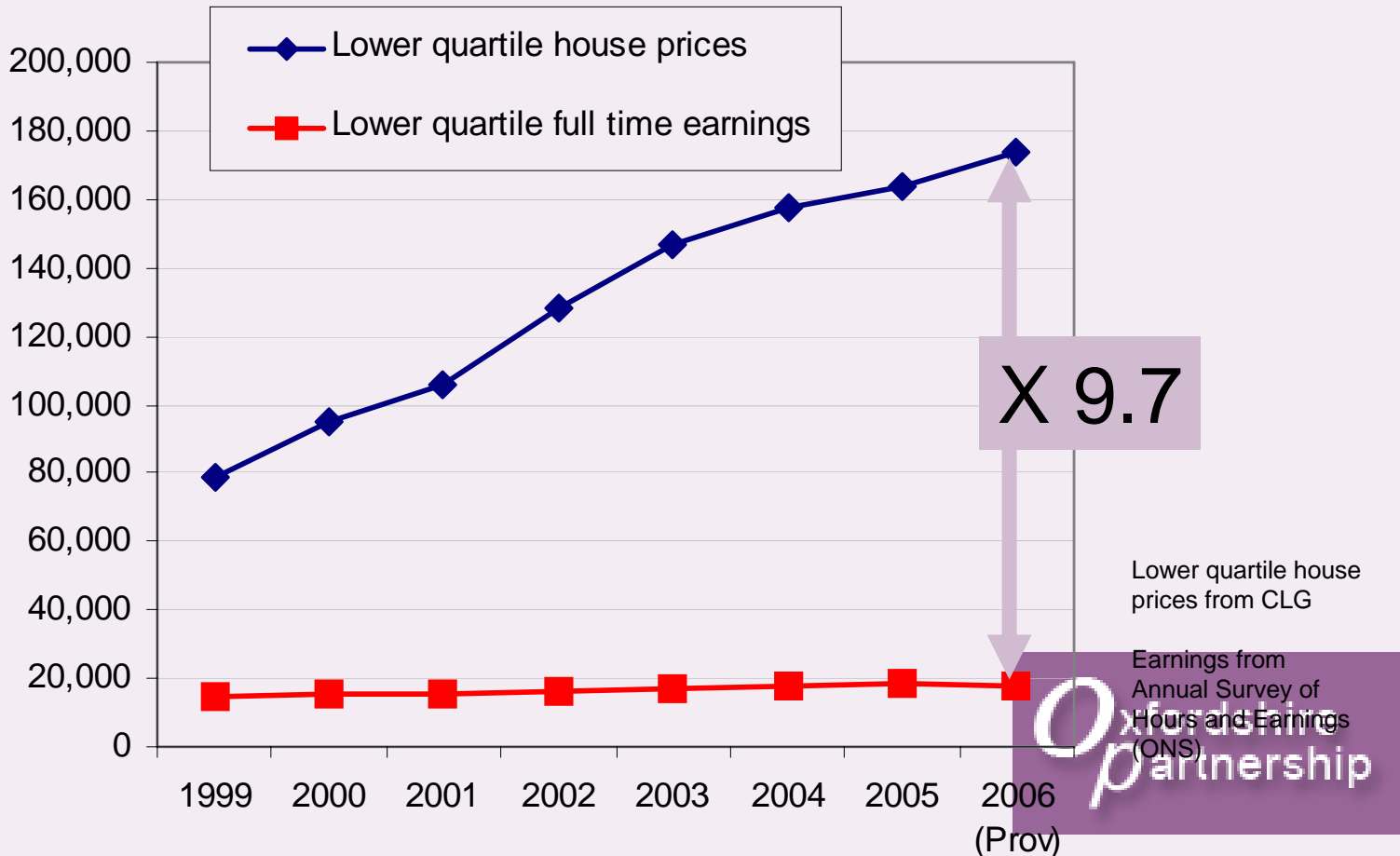
- Despite high % of graduates, 19 (mainly urban) areas have >40% adults with no skills
- Poor position on skills deprivation influenced by average GCSE results





Home ownership continues to get less accessible

Oxfordshire



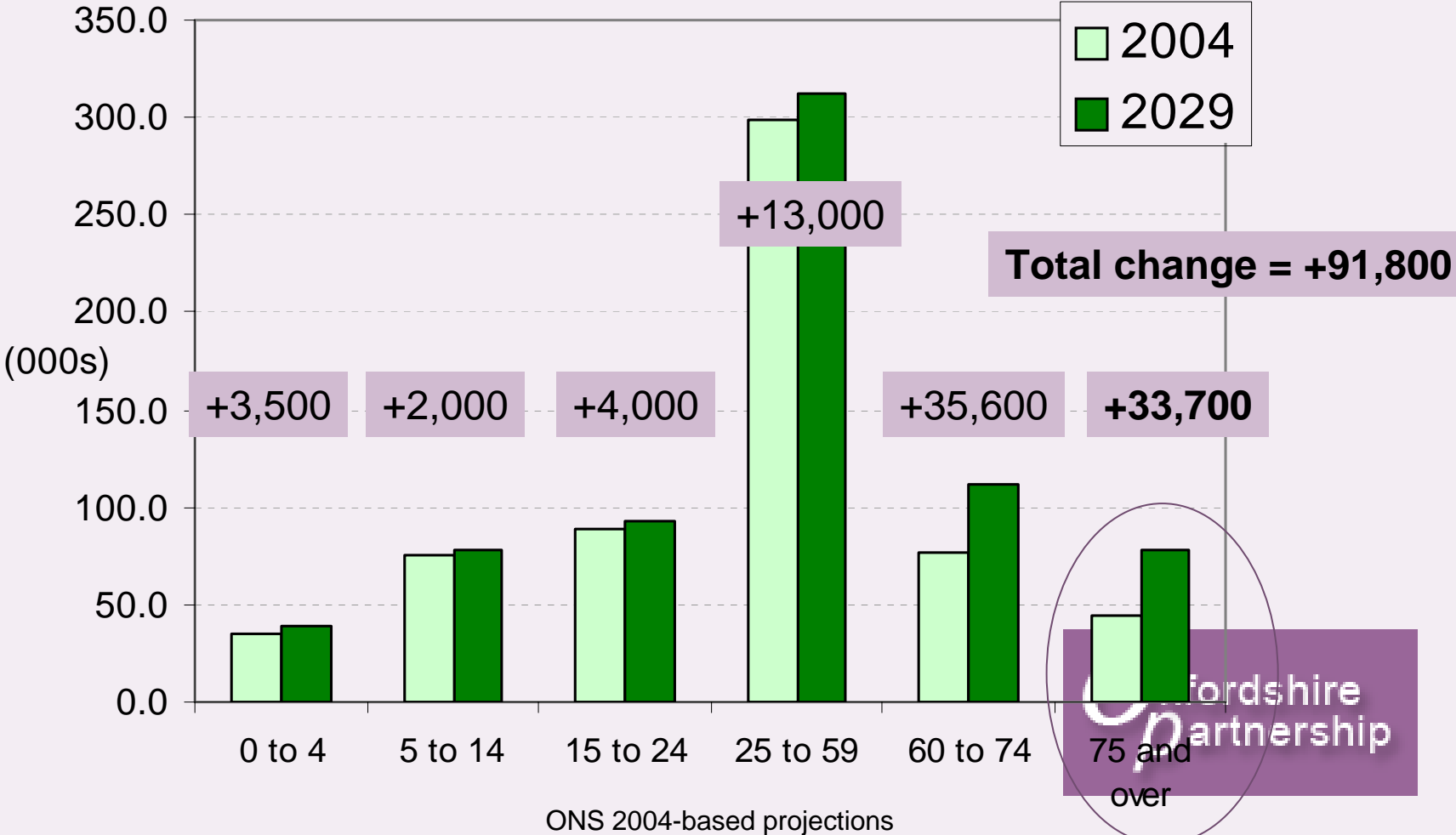
Healthy & Thriving Communities



More older people



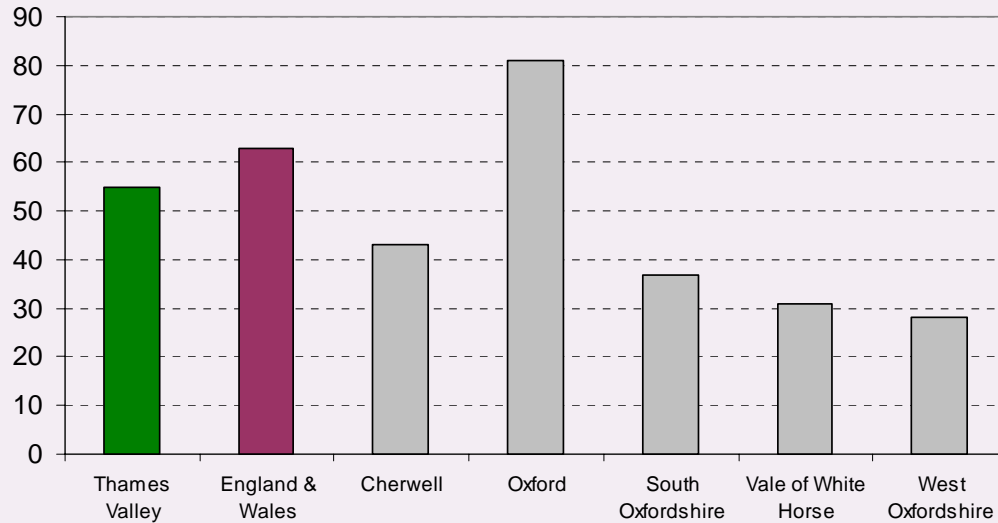
Residents of Oxfordshire by broad age band





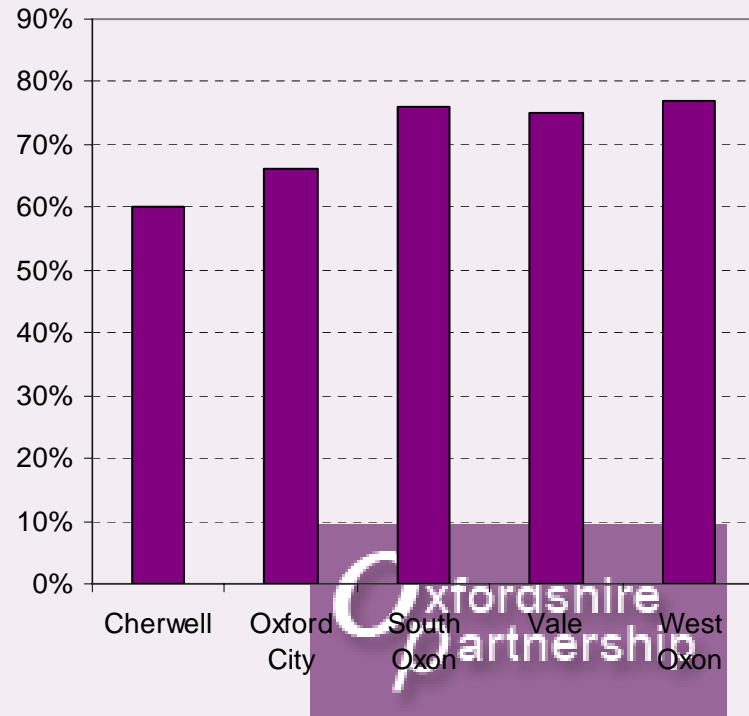
Communities want low levels of crime

Crime rate per 1,000 population 2005/06



Home Office, British Crime Survey published July 2006

% Panel members who feel safe walking alone after dark



Oxfordshire County Council Citizen's panel July 06



Issues raised by town and parish plans

Theme	<i>plans</i>	key issues
Access to services	29	Roads and traffic, cycling/walking
Environment	29	Appearance, sustainability
Children & Young People	26	Recreational needs
Recreation, leisure and culture	25	Meeting facilities; sports provision
Community safety	20	Anti-social behaviour and vandalism
Housing	19	Affordable housing
Economy	15	Support for local businesses and local employment
Spatial	15	Protection of green belt and green spaces
Health, care and wellbeing	13	General health and facilities for the elderly
Adult learning & workforce skills	9	Improvement of classes

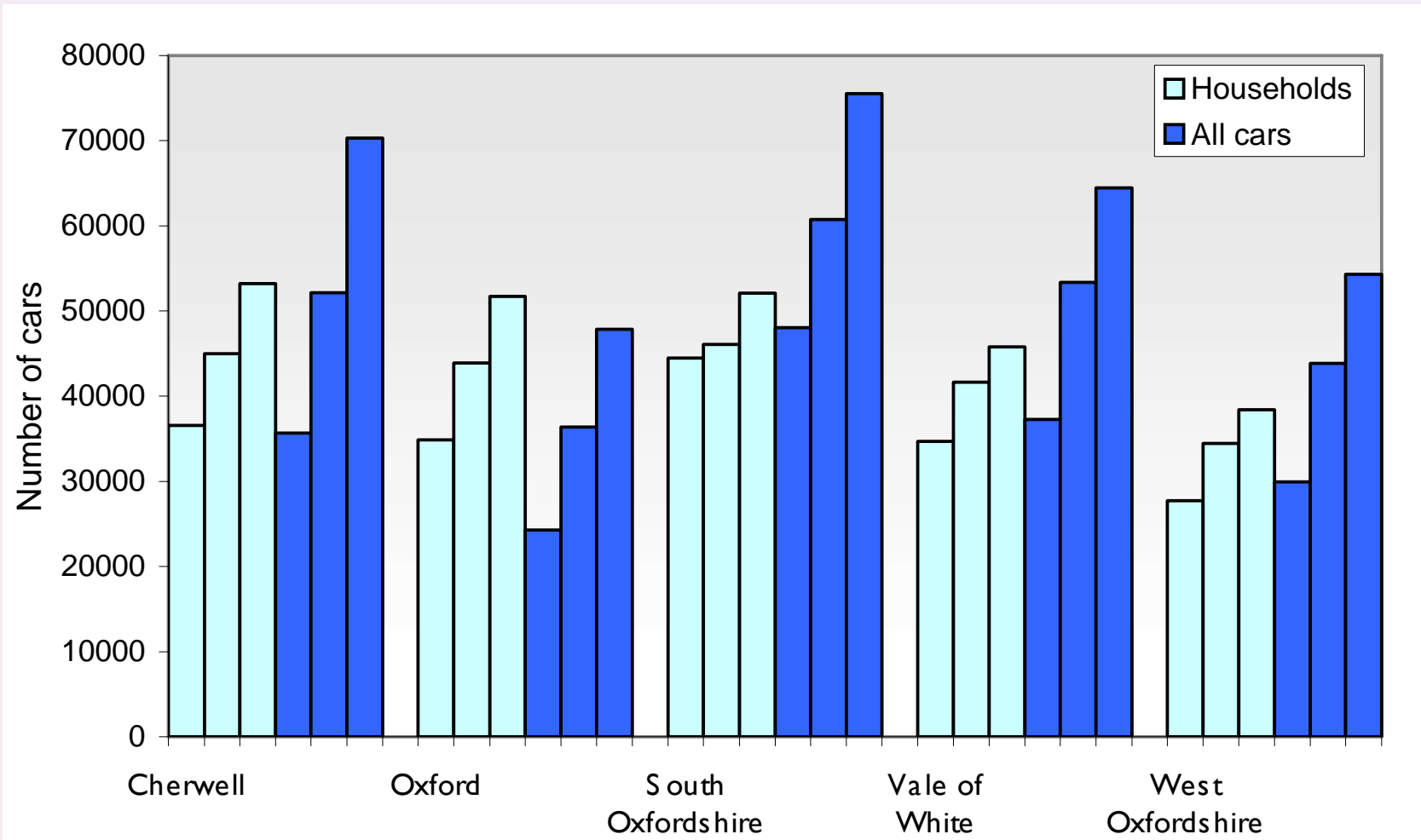
Environment & Climate Change





Huge increase in car ownership

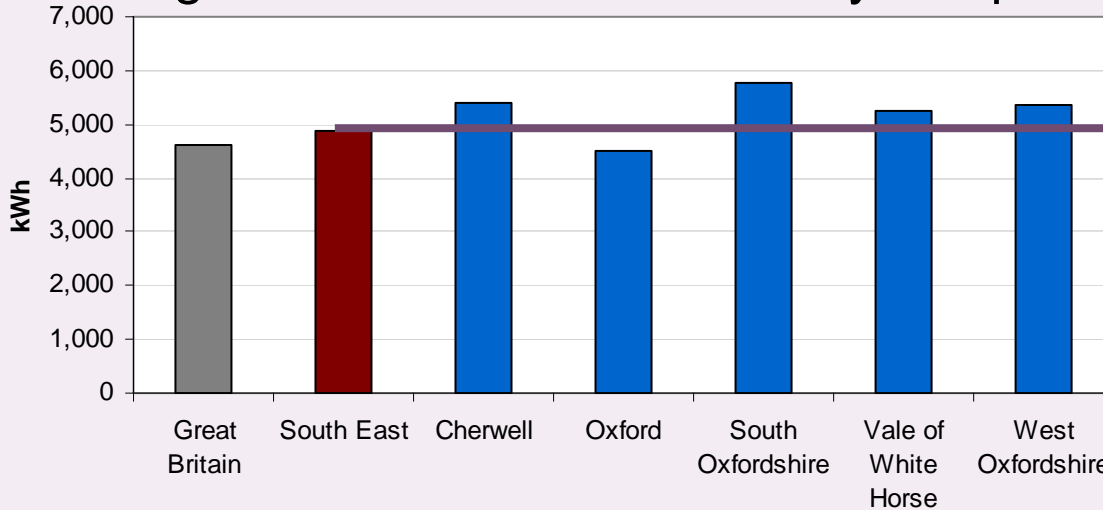
Growth in the number of households and the number of cars in 1981, 1991 and 2001





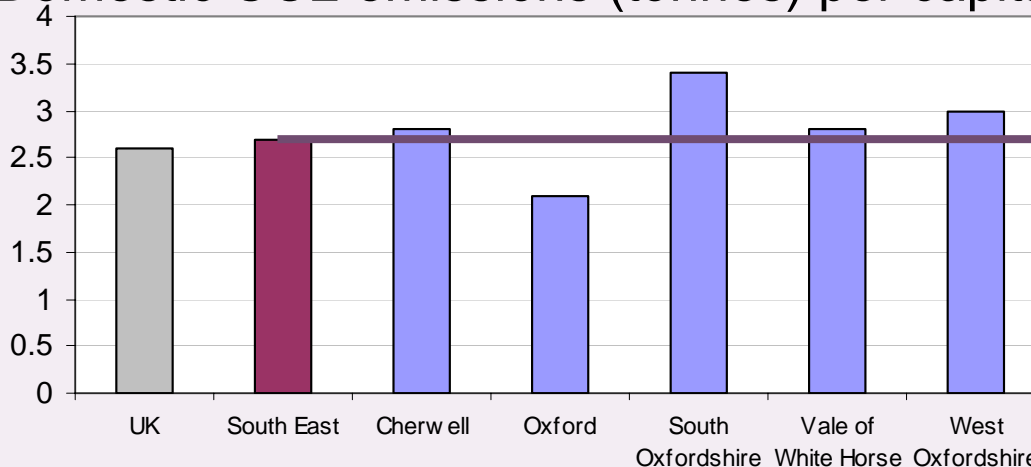
Electricity consumption and CO₂ emissions higher than average

Average annual domestic electricity use per consumer - 2005



DTI regional consumption statistics

Domestic CO₂ emissions (tonnes) per capita - 2004



CO₂ report produced for Defra by AEA Energy and Environment, experimental statistics
Oxfordshire Partnership

Our Priorities

Themes



Community life

Information on community life and community and voluntary organisations.



Community safety

Information on crime and public safety in Oxfordshire.

Economy

Oxfordshire 2030

- o **A World Class Economy**
- o **Healthy and thriving communities**
- o **Environment and climate change**
- o And a cross-cutting theme of **tackling inequalities and breaking the cycle of deprivation.**



Population

Information on historical and projected population growth, ethnicity and migration.



Poverty and deprivation

Information on families living in poverty. Mapping deprivation in Oxfordshire.



Rural

Information on rural Oxfordshire.



Travel

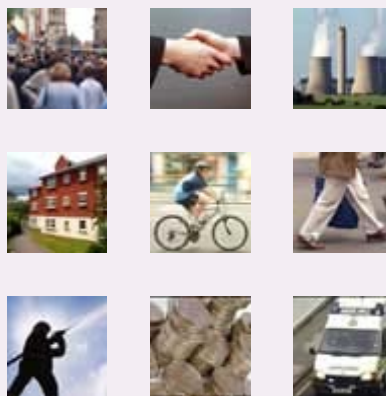
Information on commuting patterns, access to local services, road traffic and public transport.

What happens next?

- Partners comment on the first draft of the strategy (May)
- Oxfordshire Partnership agrees the draft for public consultation (June 23rd)
- Public Consultation (July-September)
- Comments analysed and strategy redrafted
- Oxfordshire Partnership adopt strategy (November)

Finding out more

- Oxfordshire Data Observatory
 - www.oxfordshireobservatory.info
- Oxfordshire Partnership Website
 - www.oxfordshirepartnership.org.uk



From Vision to Reality – the Local Area Agreement:

delivering the priorities of Sustainable
Community Strategy

Jayne Dunn



Have you heard the one about?

The police officer, the health worker & the
volunteer

& the housing association

& the teacher

& the youth worker

& the sports coach

& the councillor

& the counsellor

Local Area Agreement.



We'll cover

- Why have a Local Area Agreement?
- What has been included and why?
- Is it more than a piece of paper?

Why have a Local Area Agreement?

‘Stick’

- the government brought in legislation.

Carrots

- Partnership working in Oxfordshire is already delivering results – opportunity to develop further.
- Possibility of a small reward grant

What has been included and why?

- Oxfordshire 2030 is the foundation for the Local Area Agreement.
- Priorities where partnership working will make a real difference.
- Priorities that can be measured using the government's set of indicators.

More than a piece of paper?

A document will be submitted for ministerial sign-off in June 2008, and.....

- Each target will be underpinned by work plans
- Some targets relate to more than one partnership.
- Some targets create a 'package' of improvements.

What happens next?

- 16th May: draft targets (that can be set) are agreed
- By end of May - Public Service Board discuss and sign-off draft targets
- June: government minister signs off the draft targets
- During 2008-09: targets based on new measures will be developed.

In your pack

- Table: Chosen 35 LAA measures and how they relate to the Sustainable Community Strategy priorities
- Brief paper – covers the main points from this presentation.

From Vision to Reality

Delivery

Paul James
Head of Partnership Working
Oxfordshire County Council



Delivering on the pledges in *Oxfordshire 2030*

- Local Area Agreement important **but not everything we do.**
- Local targets to deliver on the things important to us.
- Can be short, medium, long-term.
- Changed / added to as necessary to meet our needs.
- Performance monitored by the Partnership.
- No reporting to Government.
- Annual report to public on how we are doing.

***Oxfordshire 2030* DELIVERY PLAN**

Priority : A World Class Economy

Outcome : Economic prosperity

LOCAL TARGETS

Learning opportunities available locally.

Equipping people with skills for employment and life.

Apprenticeship schemes.

Actions to raise aspirations.

LAA targets

Increase numbers of those with level 2 & 3 skills.

Reduce numbers on unemployment benefits

***Oxfordshire 2030* DELIVERY PLAN**

Priority : A World Class Economy

Outcome : Thriving tourism

LOCAL TARGETS

Improve marketing and
information to public.

Business advice services.

LAA targets

None

***Oxfordshire 2030* DELIVERY PLAN**

Priority : Healthy & Thriving Communities

**Outcome : young people are healthier, safer
and achieving more**

LOCAL TARGETS

Improve access to sports and arts activities.

Local Youth Clubs.

Support and Advice Services.

Involving young people in decision making locally.

LAA targets

Increase educational attainment.

Reduce 1st time entrants to Youth Justice system.

Reduce obesity and teenage pregnancies.

***Oxfordshire 2030* DELIVERY PLAN**

Priority : Healthy & Thriving Communities

Outcome : Strengthen communities and support for local people.

LOCAL TARGETS

Ensure volunteering services are funded.
Improve information resources.
Develop capacity of voluntary sector.

LAA targets

Increase participation in volunteering

***Oxfordshire 2030* DELIVERY PLAN**

Priority : Healthy & Thriving Communities

Outcome : A strong and independent voluntary and community sector

LOCAL TARGETS

LAA targets

Actions to ensure a robust and sustainable voluntary and community sector.

None

***Oxfordshire 2030* DELIVERY PLAN**

Priority : Environment & Climate Change

Outcome : cleaner air to breath

LOCAL TARGETS

Action on traffic congestion.
Increase public transport use.
Coleshill Low Carbon Village

LAA targets

CO2 reduction from local
authority operations /
buildings.

How will we know we are making a difference ?

- Quarterly monitoring.
- Annual review.
- Use key indicators of performance :
e.g. working age adults in employment, working age people with NVQ level 3 or higher, people achieving 5 GCSE A-C* grades.
- Annual report on data / evidence from Oxfordshire Data Observatory.
- New performance management system.