

Health, Care and Well-Being Briefing Paper

ANNEX I Data and Information

This annex includes detailed data from which the summary and analysis in the Health, care and well-being briefing paper has been drawn. Each section begins with a summary and then tables and charts are included to give full details from the original data sources.

Contents

Morbidity and Mortality	2
1.1 Summary	2
1.2 Data Tables	3
2 Lifestyles	13
2.1 Summary	13
2.2 Data Tables	14
3 Older people	26
3.1 Summary	26
3.2 Data Tables	27
4 Long term conditions	35
4.1 Summary	35
4.2 Data Tables	36
5 Finding out more	42

Acknowledgements: The data in this annex was prepared by the Decision Support team at Oxfordshire Primary Care Trust.

Morbidity and Mortality

1.1 Summary

Births and deaths

Birth rates in Oxfordshire are fairly stable with around 7500 births every year. Infant deaths are lower than the national average, as are death rates for all ages and all causes. The only major cause of death which has a higher rate than the national average is breast cancer. The major causes of death are cancer, heart disease and stroke and there are inequalities across the county with people from more deprived communities likely to die at younger ages. Accidents remain a major cause of death or injury for children and young people.

Life expectancy

Life expectancy in Oxfordshire is significantly higher than England for both men and women but there are inequalities – the life expectancy for men in Oxford City is significantly lower than any other part of the county. There are eight wards in Oxfordshire with significantly lower life expectancy than the national average. There is a difference of over 15 years between the best and worst wards in the county.

Demographic Change

Population projections show that the number of older population will continue to grow, with the number of people over 85 years increasing to nearly 15,000 by 2011 compared with just over 12,000 in 2006. This trend is expected to continue long term.

Health service activity and long term conditions

There were 134,815 episodes of hospital activity in Oxfordshire in 2006. Of these around one third were emergency admissions and one third were day case admissions for elective (planned) activity. The remainder included over 7000 maternity cases and other planned activity that needed a hospital stay of at least one night.

At the 2001 census 7.7% of the Oxfordshire population reported having a long term limiting illness, compared to 9% in the south East and 11.3% in England.

Deprivation

There are 13 Super Output Areas (SOAs) in Oxfordshire that are in the most 20% deprived in England. Ten are in Oxford City and three in Cherwell district. Full analysis of all the domains that make up the Index of Multiple Deprivation show that some areas are more deprived for these separate factors.

- Barriers to housing are services are worst in some SOAs in Oxford City
- Living Environment in three SOAs in Cherwell and two in Oxford is in the worst 10% in England
- Five SOAs in Oxford are in the worst 20% in England for income deprivation
- Oxford City has six SOAs which are very deprived in the Health and Disability domain
- Geographical barriers to services show 44 rural SOAs are classified as deprived because of the distance by road to the GP, supermarket or convenience store, primary school and post office.
- Nine SOAs are within the 5% most deprived in England in terms of education and skills.
- 14 SOAs are in the 10% worst off for crime and disorder in England, mostly in Oxford City but two are in Cherwell.

1.2 Data Tables

Births and deaths

Oxfordshire birth statistics

	2002	2003	2004	2005
Live births (observed)	6,985	7,297	7,609	7,575
Live birth rate (births per 1,000 resident population)	11.5	12.0	12.4	12.2
General fertility rate (number of live births per 1,000 females of child-bearing age)	53.1	55.4	57.2	56.8
Proportion < 2500gms (per 100 live and stillbirths with stated birth weight)	6.7	6.0	6.8	7.4
Stillbirth rate	5.3	4.4	5.9	5.4

Source: Office for National Statistics, VSI

England & Wales birth statistics

	2002	2003	2004	2005
Live births (observed)	595,914	621,251	639,721	645,621
Live birth rate (births per 1,000 resident population)	11.4	11.8	12.1	12.1
General fertility rate (number of live births per 1,000 females of child-bearing age)	55.0	57.0	58.4	58.4
Proportion < 2500gms (per 100 live and stillbirths with stated birth weight)	8.1	8.0	7.9	7.9
Stillbirth rate	5.6	5.7	5.5	5.4

Source: Office for National Statistics, VSI

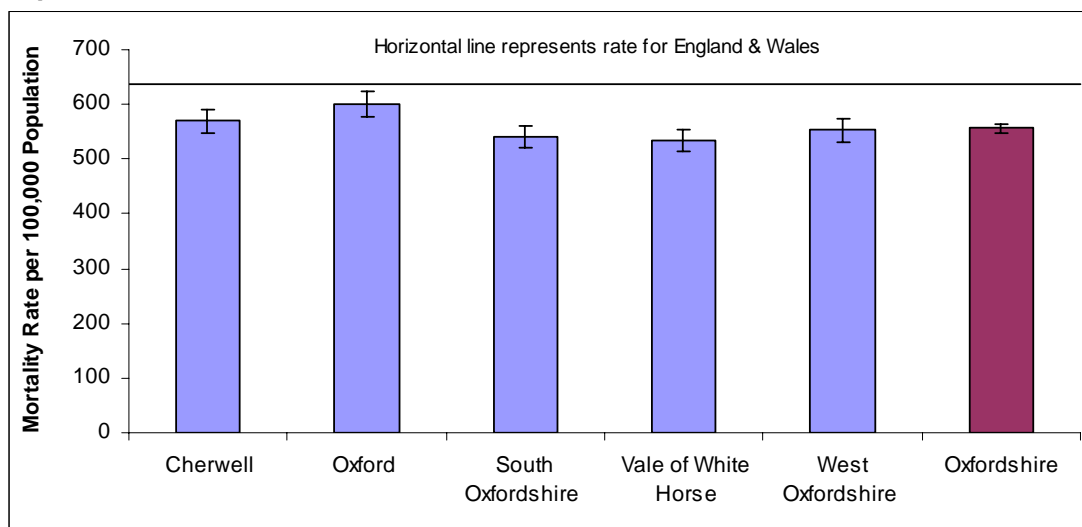
Infant Mortality Rates

	2004			2005		
	Under 1 year	Under 4 weeks	Under 1 week	Under 1 year	Under 4 weeks	Perinatal **
England	5.1	3.5	2.7	5.0	3.4	8.0
Oxfordshire	4.3	2.5*	1.8*	4.2	3.2	7.1
Cherwell	4.4*	2.7*	1.6*	7.7*	6.1*	6.6*
Oxford	3.5*	1.8*	1.2*	3.4*	1.7*	8.9*
South Oxfordshire	5.0*	2.5*	2.5*	2.6*	2.6*	7.1*
Vale of White Horse	6.5*	3.6*	2.9*	4.4*	2.9*	6.6*
West Oxfordshire	1.8*	1.8*	0.9*	1.8*	1.8*	5.5*

Source: ONS Vital Statistics (VSI)

*Denotes a rate calculated from less than 20 events.

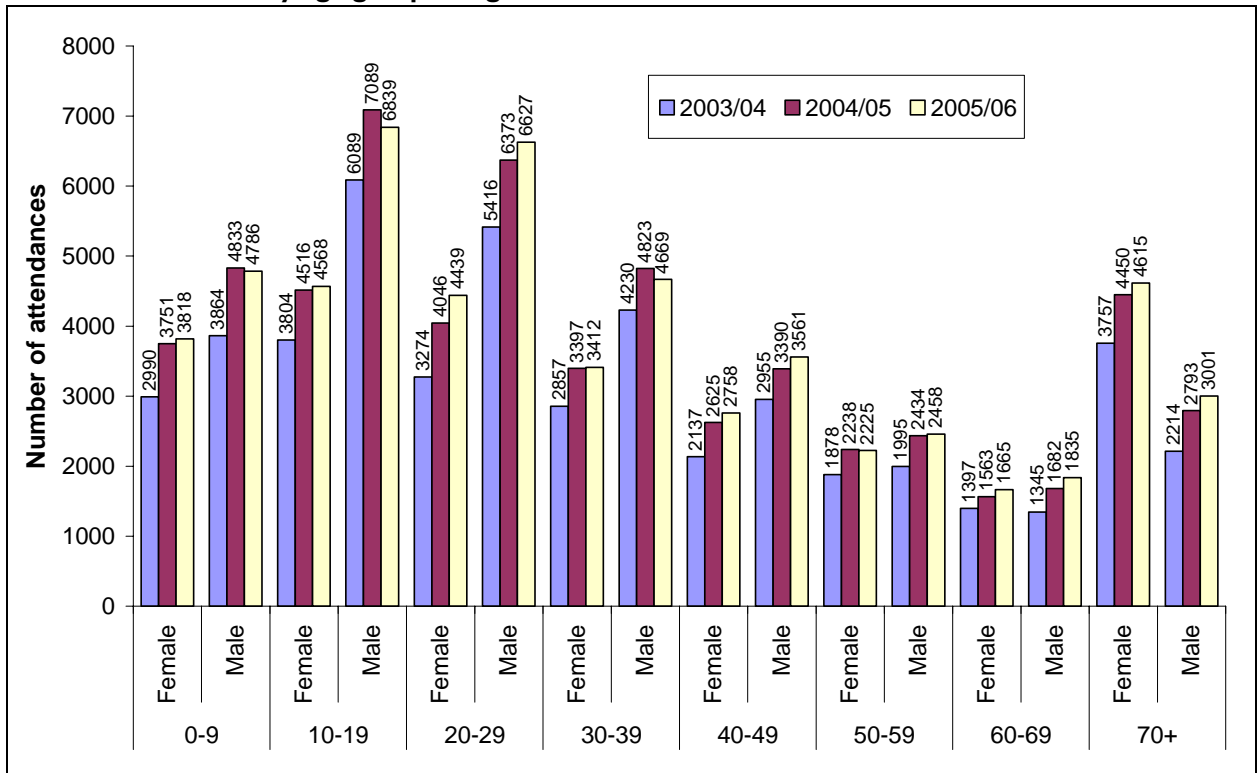
Mortality rates for all causes (ICD10 A00-Y99) in people of all ages for Oxfordshire; 2003-05 pooled data



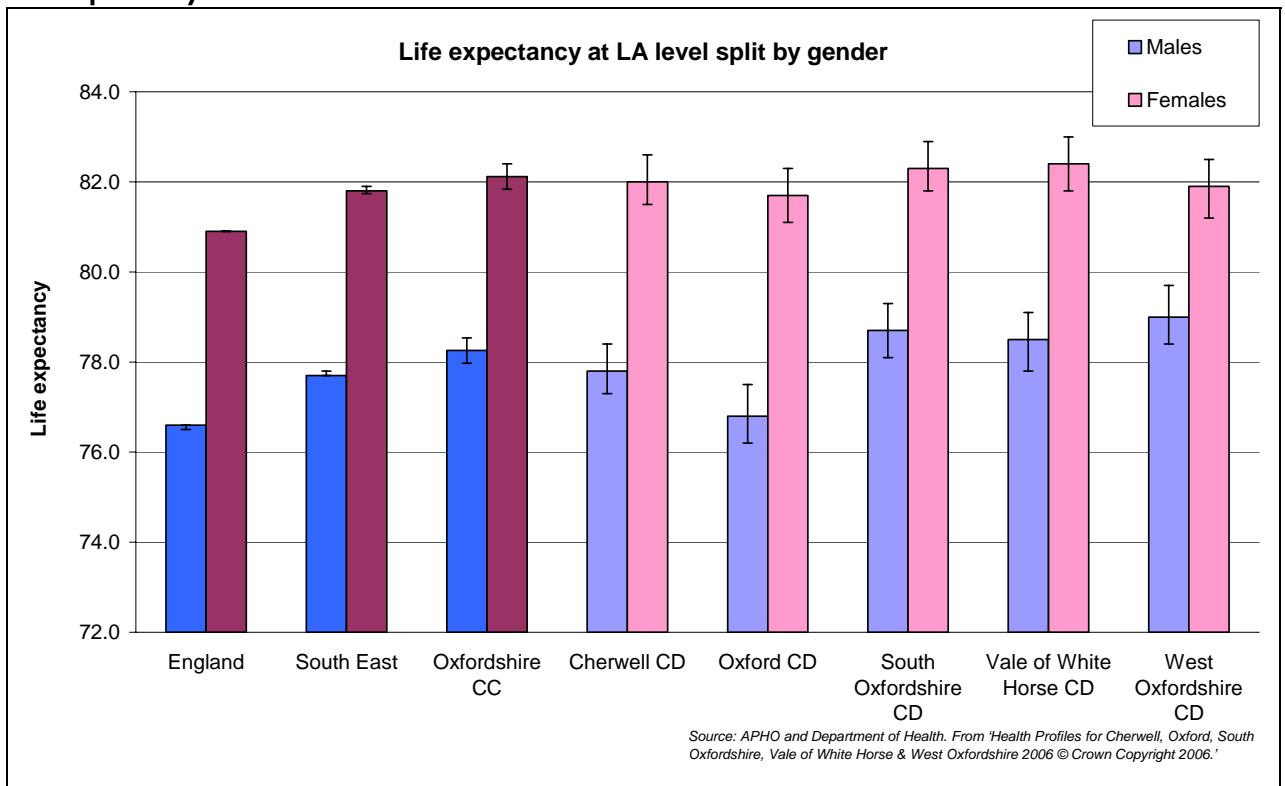
		Observed	Rate	RateLower limit	RateUpper limit
England & Wales	M	741282	762.4	760.68	764.11
	F	821529	533.96	532.71	535.21
	T	1562811	635.7	634.67	636.73
Cherwell	M	1549	699.38	665.36	733.4
	F	1613	475.13	450.35	499.9
	T	3162	568.96	548.81	589.12
Oxford	M	1485	718.18	681.24	755.12
	F	1627	503.9	476.28	531.51
	T	3112	600.94	578.49	623.38
South Oxfordshire	M	1566	645.11	613.75	676.48
	F	1800	462.21	439.01	485.42
	T	3366	540.71	521.9	559.52
Vale of White Horse	M	1419	624.48	592.21	656.76
	F	1571	459.77	435.34	484.21
	T	2990	533.46	513.76	553.17
West Oxfordshire	M	1223	628.74	593.78	663.7
	F	1543	491.88	464.91	518.85
	T	2766	553.72	532.26	575.18
Oxfordshire	M	7242	659.4	644.41	674.39
	F	8154	475.96	464.74	487.17
	T	15396	556.43	547.37	565.48

Source: Compendium of Clinical & Health Indicators

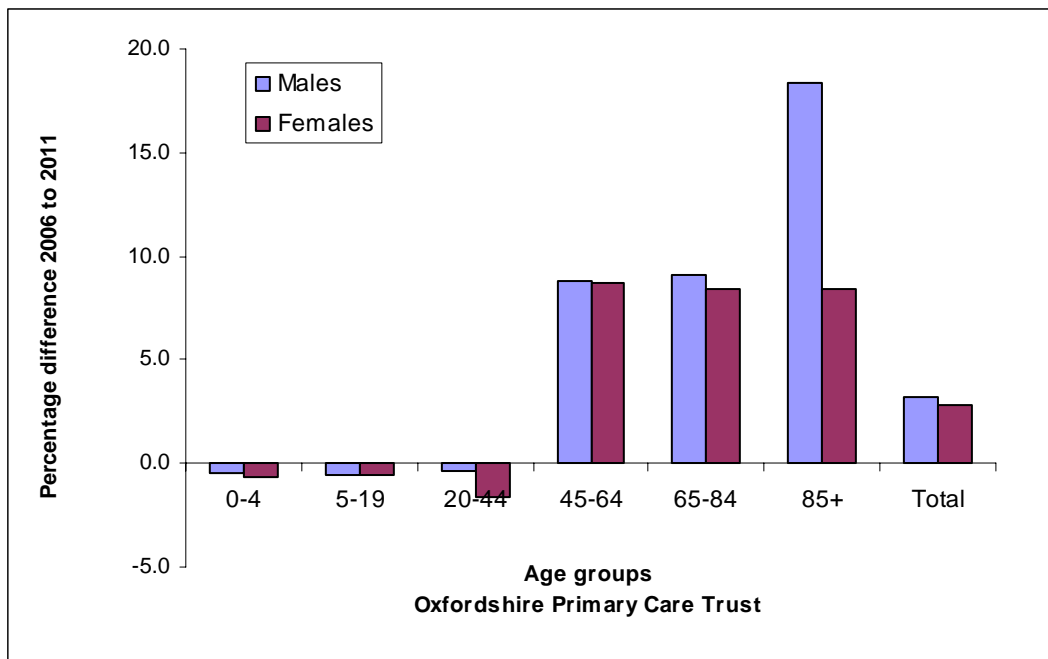
Number of attendances at Oxfordshire A&E departments following accidents – 2003/04, 2004/05 and 2005/06 by age group and gender



Life expectancy



Population difference between 2006 and 2011



Source: Ward population and household forecasts for Oxfordshire county (2006)

Population totals for 2006

2006	0-4	5-19	20-44	45-64	65-84	85+	Total
Males	17,342	57,196	109,085	71,134	35,675	3,772	294,205
Females	17,078	52,650	106,339	72,164	41,451	8,526	298,209

Population totals for 2011

2011	0-4	5-19	20-44	45-64	65-84	85+	Total
Males	17,269	56,891	108,663	77,415	38,926	4,466	303,630
Females	16,962	52,376	104,619	78,477	44,942	9,247	306,624

Source: Ward population and household forecasts for Oxfordshire county (2006)

Health Service activity and long-term conditions**Activity 2006**

Admission Type	Quarter (2006)				Grand Total
	1	2	3	4	
Ordinary Elective	4504	4024	4266	3632	16426
Day Case	10205	9866	9489	9929	39489
Regular Day Admission	5840	5618	5749	6099	23306
Emergency	11667	10883	10738	10849	44137
Maternity	1747	1770	1776	1787	7080
Other/not known	1203	1337	991	846	4370
Grand Total	35166	33498	33009	33142	134815

Source: UDS_SUS (as at April 2007)

Limiting long-term illness

	Population		Percentage of people with limiting long-term illness	
	Total	16-74 yrs (working age)	Within total population	Within working age group
ENGLAND AND WALES	52,041,916	37,607,438	18.2%	11.5%
ENGLAND	49,138,831	35,532,091	17.9%	11.3%
SOUTH EAST	8,000,645	5,766,307	15.5%	9.0%
Oxfordshire	605,488	444,988	13.4%	7.7%
Cherwell	131,785	95,757	13.3%	8.2%
Oxford	134,248	103,950	13.8%	8.2%
South Oxfordshire	128,188	92,941	13.1%	7.2%
Vale of White Horse	115,627	83,502	13.1%	7.2%
West Oxfordshire	95,640	68,838	13.7%	7.5%

Source: 2001 Census © Crown Copyright 2003

Deprivation

Health inequalities target: To reduce health inequalities within the local area (Oxfordshire) by narrowing the gap in all-age, all-cause mortality.

Suggested baseline 1995-97 with an end point of 2009-2011 and a reduction of 10%.

Directly age-standardised rates were calculated for all wards in Oxfordshire. Wards were split into equal quintile groups with between 27 and 29 in each group, ensuring that for all years there were the same number of wards in quintile groups 1 and 5¹.

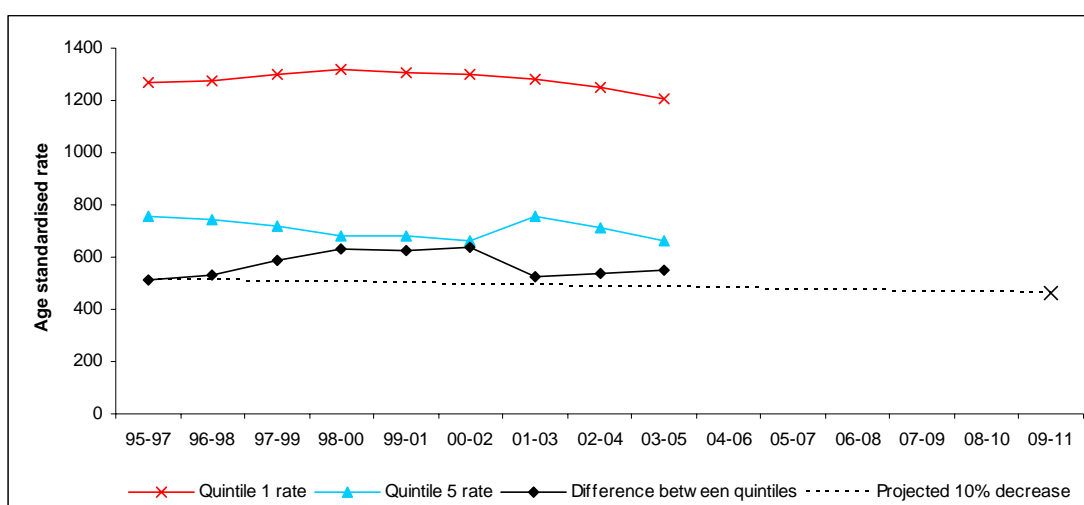
The first two columns of the table below show actual mortality rates of wards contained in quintile groups one and five² up to and including 2003-05. The third column shows the difference between these two values. The final column, "Target", is based on a 10% reduction on the difference in 1995-97 by 2009-11.

The data is also represented in a chart below.

Directly age-standardised mortality rates (by ward) - Oxfordshire - Quintiles 1 and 5 rates

	Quintile 1	Quintile 5	Difference	Target
95-97	753.77	1268.58	514.82	514.82
96-98	744.62	1276.57	531.95	511.14
97-99	716.11	1303.11	587.00	507.46
98-00	683.65	1317.93	634.28	503.78
99-01	679.88	1306.28	626.40	500.11
00-02	663.64	1299.56	635.92	496.43
01-03	756.96	1282.81	525.86	492.75
02-04	714.19	1248.93	534.74	489.08
03-05	659.40	1207.37	547.97	485.40
04-06				481.72
05-07				478.04
06-08				474.37
07-09				470.69
08-10				467.01
09-11				463.34

Rates indicate the number of deaths per 100,000 people in the relevant time period in the standard population (e.g. in 1995-97, quintile group 1 (753.77) indicates there would be 754 deaths per 100,000 people in the England and Wales population during that time period if they experienced the same age-specific mortality rates as observed in that quintile).



¹ For data prior to 2001, there were 144 wards in Oxfordshire, therefore 29 wards in each of the quintile groups 1 and 5. Data for 2001 onwards is based on 136 wards in place in 2003, therefore quintile groups 1 and 5 contain 27 wards.

² Quintile group 5 contains the highest mortality rates, quintile group 1 contains the lowest mortality rates.

Source of population data: CACI ward projections (1995-97 to 2000-02); Oxfordshire County small area projections (using GLA model) (2001-03 to 2003-05); ONS (England & Wales populations).

Source of mortality data: ONS Public Health Mortality File for Oxfordshire

Most deprived areas within Oxfordshire PCT

LowerSOA name	IMD SCORE	% SOAs higher in England	RANK OF IMD (where 1 is most deprived)
Northfield Brook 69	49.68	7.3	2365
Northfield Brook 68	42.64	11.8	3849
Rose Hill and Iffley 77	42.07	12.3	4000
Barton and Sandhills 14	40.27	13.9	4511
Rose Hill and Iffley 76	39.89	14.2	4626
Barton and Sandhills 13	39.80	14.4	4666
Banbury Ruscote 49	38.99	15.2	4931
Banbury Ruscote 50	38.85	15.3	4968
Blackbird Leys 20	38.75	15.4	5002
Blackbird Leys 18	37.87	16.2	5275
Carfax 22	37.55	16.6	5386
Banbury Ruscote 54	34.77	19.4	6308
Blackbird Leys 19	34.32	19.9	6461

Source: ODPM Index of Multiple Deprivation 2004

Least deprived areas within Oxfordshire PCT

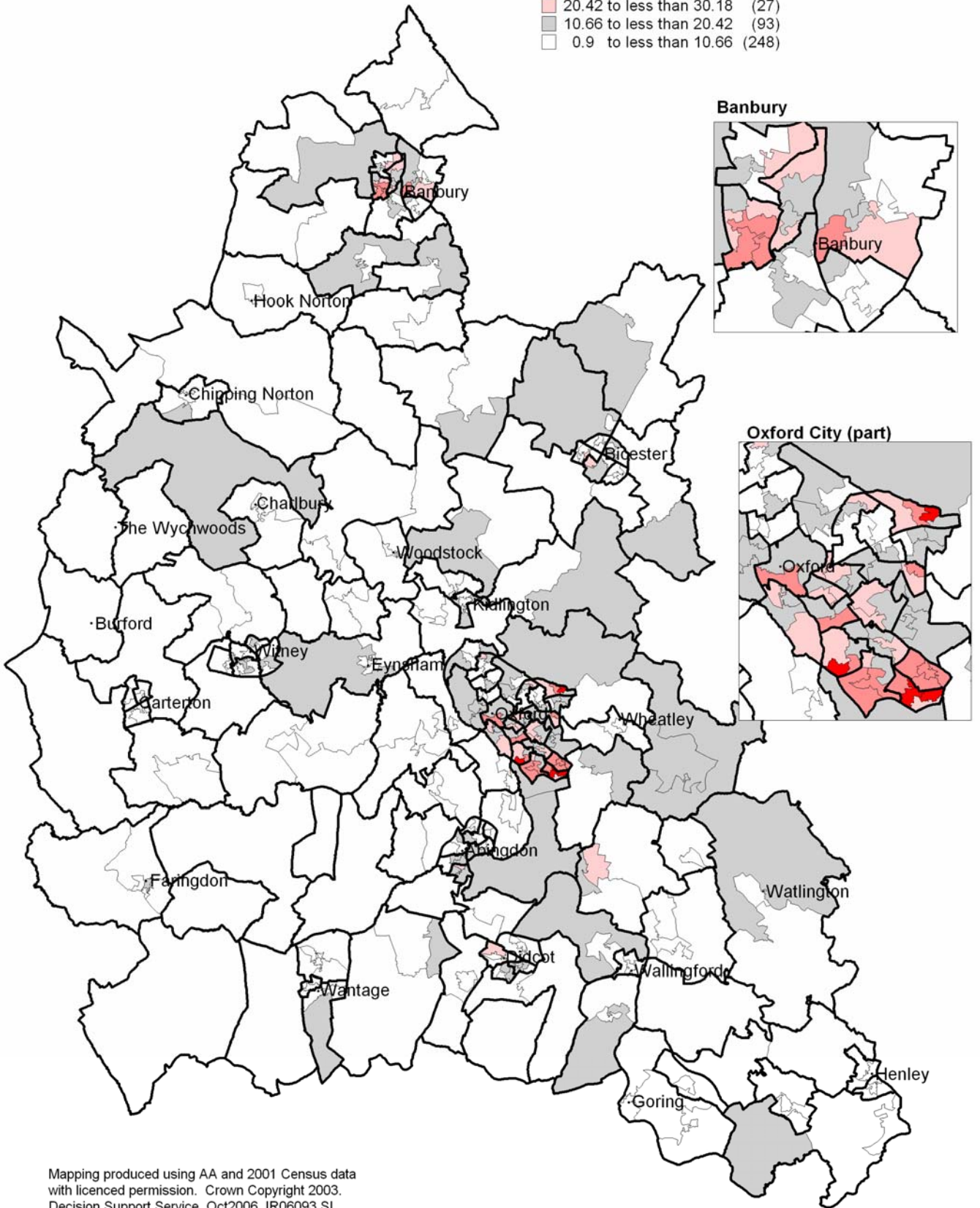
LowerSOA name	IMD SCORE	% SOAs higher in England	RANK OF IMD (where 1 is most deprived)
Kennington and South Hinksey 34	2.26	99.0	32153
Freeland and Hanborough 89	2.16	99.1	32197
Wantage Charlton 58	2.13	99.2	32210
Witney East 10	2.00	99.3	32268
Bicester South 65	1.74	99.6	32341
Henley South 56	1.72	99.6	32342
Abingdon Dunmore 93	1.38	99.8	32429
Stonesfield and Tackley 04	1.30	99.9	32440
Witney West 20	0.90	100.0	32476

Source: ODPM Index of Multiple Deprivation 2004

**Index of Multiple Deprivation 2004
Oxfordshire PCT**

IMD score based on quintile groups
The higher the score, the more deprived the area

■	39.94 to 49.68	(4)
■	30.18 to less than 39.94	(16)
■	20.42 to less than 30.18	(27)
■	10.66 to less than 20.42	(93)
■	0.9 to less than 10.66	(248)



Mapping produced using AA and 2001 Census data with licenced permission. Crown Copyright 2003. Decision Support Service Oct2006 IR06093 SL

Source: ODPM Index of Multiple Deprivation 2004

Most deprived areas within Oxfordshire PCT in terms of Wider Barriers deprivation

LowerSOA name	IMD SCORE (Wider barriers)	% SOAs higher in England	RANK OF IMD (where 1 is most deprived)
Holywell 21	1.42	4.68	1521
Carfax 22	1.37	5.20	1690
St. Margaret's 85	1.34	5.53	1796
St. Mary's 86	1.24	6.70	2177
St. Mary's 88	1.23	6.85	2225
Jericho and Osney 50	1.17	7.51	2441
St. Mary's 87	1.17	7.54	2450
Rose Hill and Iffley 76	1.15	7.78	2527
North 66	1.14	7.91	2569
St. Clement's 79	1.12	8.14	2643
North 64	1.12	8.18	2656
Summertown 93	1.10	8.38	2721
Summertown 92	1.10	8.48	2755
Hinksey Park 43	1.10	8.49	2758
St. Clement's 82	1.08	8.74	2840

Source: ODPM Index of Multiple Deprivation 2004

Most deprived areas within Oxfordshire PCT in terms of living environment

LowerSOA name	IMD SCORE (Crime)	% SOAs higher in England	RANK OF IMD (where 1 is most deprived)
Banbury Ruscote 49	54.50	5.43	1764
St. Mary's 88	52.90	6.29	2044
Holywell 21	52.08	6.66	2163
Banbury Ruscote 53	50.55	7.47	2427
Banbury Ruscote 50	50.33	7.63	2480

Source: ODPM Index of Multiple Deprivation 2004

Most deprived areas within Oxfordshire PCT in terms of health & disability deprivation

LowerSOA name	IMD SCORE (Health and disability)	% SOAs higher in England	RANK OF IMD (where 1 is most deprived)
Carfax 22	2.14	0.89	290
Northfield Brook 69	1.15	10.44	3390
Littlemore 53	1.01	13.71	4453
Barton and Sandhills 13	0.91	15.96	5184
St. Mary's 87	0.78	19.68	6392
Rose Hill and Iffley 77	0.78	19.85	6448

Source: ODPM Index of Multiple Deprivation 2004

Most deprived areas within Oxfordshire PCT in terms of Geographic Barriers

LowerSOA name	IMD SCORE (Geographic barriers)	% SOAs higher in England	RANK OF IMD (where 1 is most deprived)
The Astons and Heyfords 07	2.07	0.94	305
Stonesfield and Tackley 05	2.06	0.99	323
Fringford 84	2.06	1.00	324
Otmoor 01	2.00	1.21	393
Great Milton 47	1.99	1.24	402
Watlington 78	1.97	1.37	445
Fringford 83	1.96	1.41	459
Launton 00	1.94	1.51	489
Alvescot and Filkins 62	1.93	1.56	507
The Astons and Heyfords 05	1.92	1.59	518

Source: ODPM Index of Multiple Deprivation 2004

Most deprived areas within Oxfordshire PCT in terms of education & skills deprivation

LowerSOA name	IMD SCORE (Education & skills))	% SOAs higher in England	RANK OF IMD (where 1 is most deprived)
Barton and Sandhills 14	81.30	1.02	330
Banbury Ruscote 49	80.06	1.16	378
Blackbird Leys 19	74.90	1.88	612
Abingdon Caldecott 92	73.50	2.11	685
Northfield Brook 67	66.28	3.67	1192
Blackbird Leys 20	65.83	3.79	1230
Banbury Ruscote 53	65.63	3.84	1248
Northfield Brook 68	62.85	4.73	1535
Northfield Brook 69	61.96	4.99	1620

Source: ODPM Index of Multiple Deprivation 2004

Most deprived areas within Oxfordshire PCT in terms of crime deprivation

LowerSOA name	IMD SCORE (Crime)	% SOAs higher in England	RANK OF IMD (where 1 is most deprived)
Rose Hill and Iffley 75	1.54	3.21	1043
Jericho and Osney 51	1.47	4.03	1309
Hinksey Park 42	1.28	6.40	2078
Rose Hill and Iffley 78	1.22	7.45	2421
Barton and Sandhills 16	1.21	7.56	2455
Blackbird Leys 19	1.2	7.72	2506
Rose Hill and Iffley 76	1.18	8.06	2619
Carfax 22	1.16	8.60	2793
Banbury Grimsbury and Castle 35	1.16	8.64	2806
Rose Hill and Iffley 77	1.13	8.99	2919
St. Mary's 88	1.11	9.54	3098
Barton and Sandhills 13	1.1	9.82	3191
Banbury Ruscote 54	1.1	9.62	3125

2 Lifestyles

2.1 Summary

Smoking

Over 3300 people gave up smoking for at least 4 weeks in Oxfordshire in 2005-06. Analysis of people known by their GP to be smokers has shown a higher proportion of them live in deprived areas of the county. Analysis of quitters by deprivation also shows more are from more deprived localities. Both these findings are statistically significant.

Obesity

Childhood obesity data has not been routinely available in the past but since 2005-06 the measurement of children in Reception and Year 6 classes has been a requirement. Early Oxfordshire figures from a very small sample showed 11.4% of children measured were obese which is in line with national averages.

Body Mass Index (BMI) data is collected by GPs. Analysis of the figures to determine if there are links between obesity and deprivation show no association but this was based on quite low percentages of BMI actually being recorded.

The Oxfordshire Healthy Lifestyle Survey in 2005 asked respondents to record their weight and height. 35% of people who completed the survey were classified as overweight (46% of men and 28% of women) and 14% were classified as obese (11% of men and 16% of women).

Activity/exercise

The Active England Survey in 2006 recorded 23.2% people in Oxfordshire engaging in 30 minutes of moderate intensity activity at least three times a week. This is slightly higher than the national figure from Sport England.

Over 26% of people who completed the Oxfordshire Healthy Lifestyle Survey in 2005 said they were taking little or no exercise. 44% said they took "some exercise (39% of men, 47% of women) and 29.7% said they took "adequate exercise. 72% said they wanted to be more physically active. This figure rose to 81.5% of the 25-34 year olds.

Healthy eating

Only 27.6% of respondents to the Oxfordshire Healthy Lifestyle Survey in 2005 said they eat at least 5 portions of fruit and vegetables each day (19% of men and 33% of women). In general older people were more likely to eat more fruit and vegetables.

Breastfeeding

The number of babies being breastfed at birth is increasing, with breastfeeding initiation in 75.68% of births in Oxfordshire. Figures for breastfeeding at the primary birth visit in 2006 show that 67.79% of babies were still being breastfed, an increase since 2005 when the figure was 66.39%. There is a significant variation in initiation rates across localities, in 2006 only 56% of mothers in Oxford south east locality initiated breastfeeding compared to 87% in the Henley-Wallingford locality.

Analysis of the breastfeeding figures by deprivation show a very strong correlation, with mothers from more deprived areas much less likely to initiate breastfeeding with a 22% difference in initiation accounted for by deprivation. There is still an association between deprivation and the likelihood of breastfeeding at primary birth visit and after 6-8 weeks, but this is not statistically significant.

Alcohol and substance abuse

13.6% of people who completed the Oxfordshire Healthy Lifestyle Survey in 2005 reported consuming quantities of alcohol which are above the recommended levels (19% of men and 9% of women). Individuals aged 45 – 54 were the most likely to consume alcohol above the recommended levels (18%). 12% said they would like to reduce their alcohol consumption (15% of men and 11% of women). The highest numbers were aged 35-54.

The SEPHO alcohol report in January 2007 stated that weekly alcohol consumption by men in Oxfordshire and the Thames Valley has increased since 1997, and is now the highest in the South East with an average of around 19 units per week. For women, weekly alcohol consumption is broadly similar

to national and regional levels at around eight units per week. These figures are not statistically significant.

SEPHO also reported that Oxford and Cherwell districts have the second and third highest rate of alcohol-related hospital admissions respectively in the Thames Valley. The report shows that around 700 people in Oxford per 100,000 population were admitted to hospital for alcohol related reasons in 2004-5. These levels are well above the regional average.

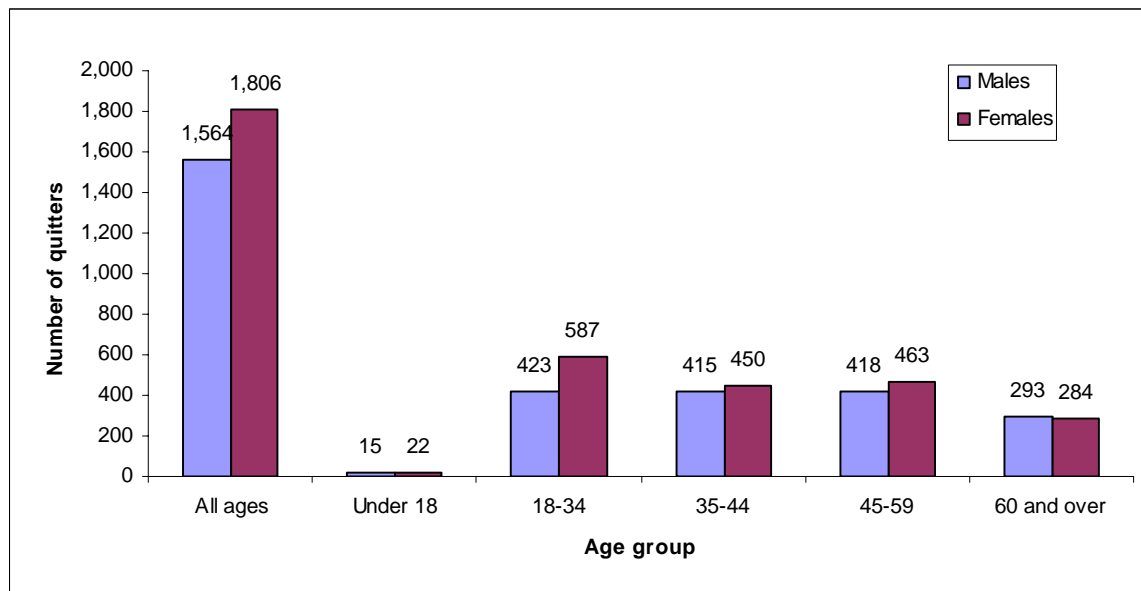
Sexual health & sexually transmitted diseases

Rates of sexually transmitted infections in the county are growing. The number of new cases of Chlamydia diagnosed in Oxfordshire's GUM clinics has increased by 41% between 2001 and 2006. Over 1600 new cases of Chlamydia were diagnosed in 2006. The number of new cases of Syphilis diagnosed in GUM clinics has increased by 128% between 2001 and 2006. However the number of cases is small (16 in 2006) and fluctuates each year. Between 2002 and 2005 there has been a 51% increase in the number of people known to be living with HIV in Oxfordshire. Although there has been an 11% decrease in new cases of HIV diagnosed between 2001 and 2006, 62 new cases of HIV were diagnosed in 2006.

Teenage (under 18) conception rates in the county are falling slightly, but Oxford City and Cherwell district still have higher rates than the England and Wales average. The rate in 2005 for Oxfordshire was 34.2 conceptions per 1000 females aged 15 – 17. This translates to around 1100 conceptions per year. In 2006 there were 8 new mothers of under 16 who gave birth to babies in Oxfordshire, 103 mothers of between 16 – 17 years and 227 aged 18-19.

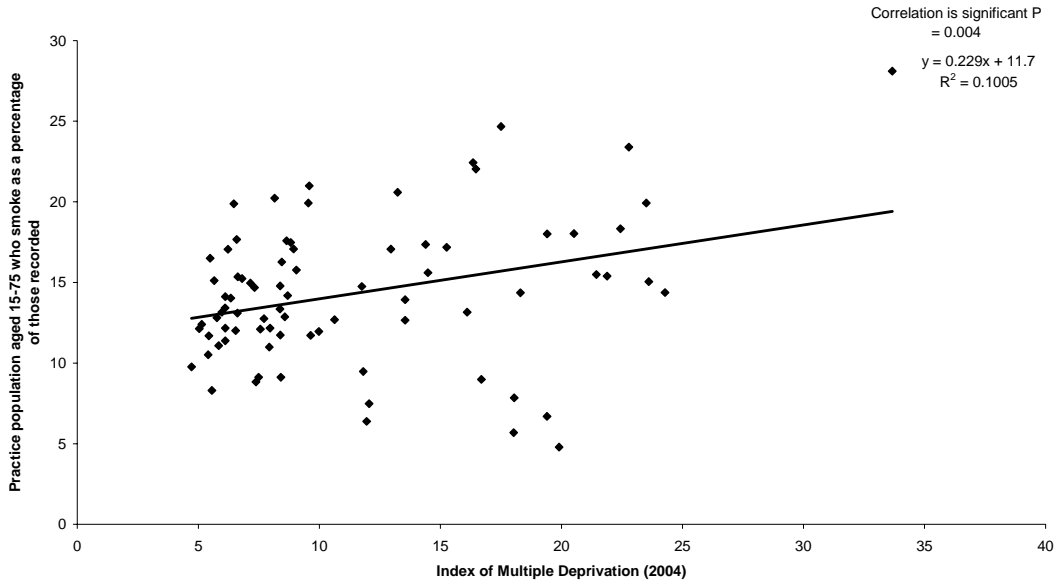
2.2 Data Tables

Smoking quitters at four-week stage 2005/06

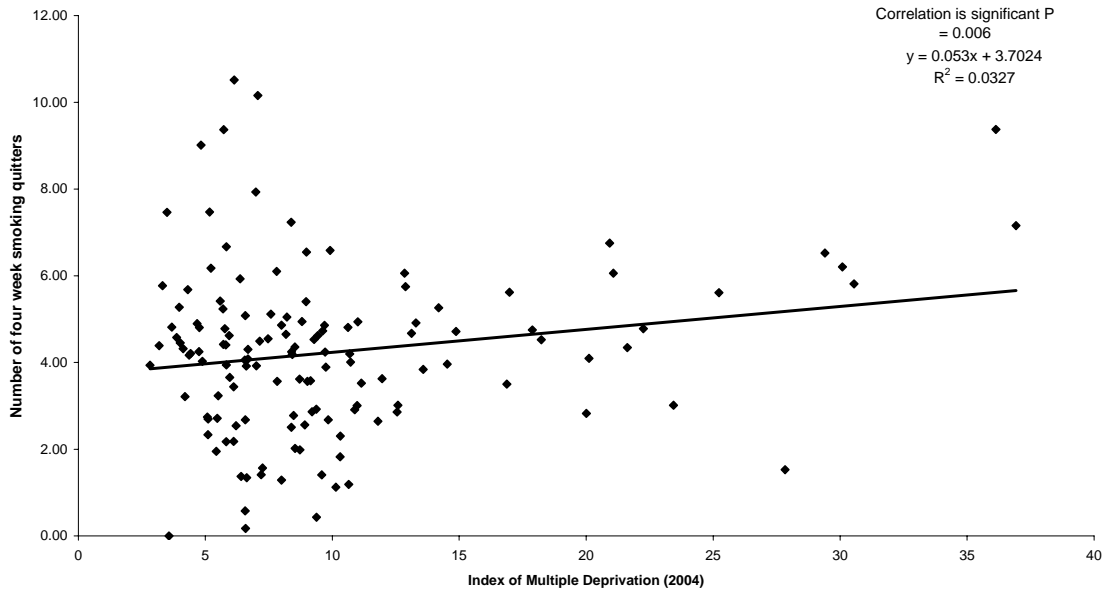


Source: Oxfordshire Smoking Advice Service

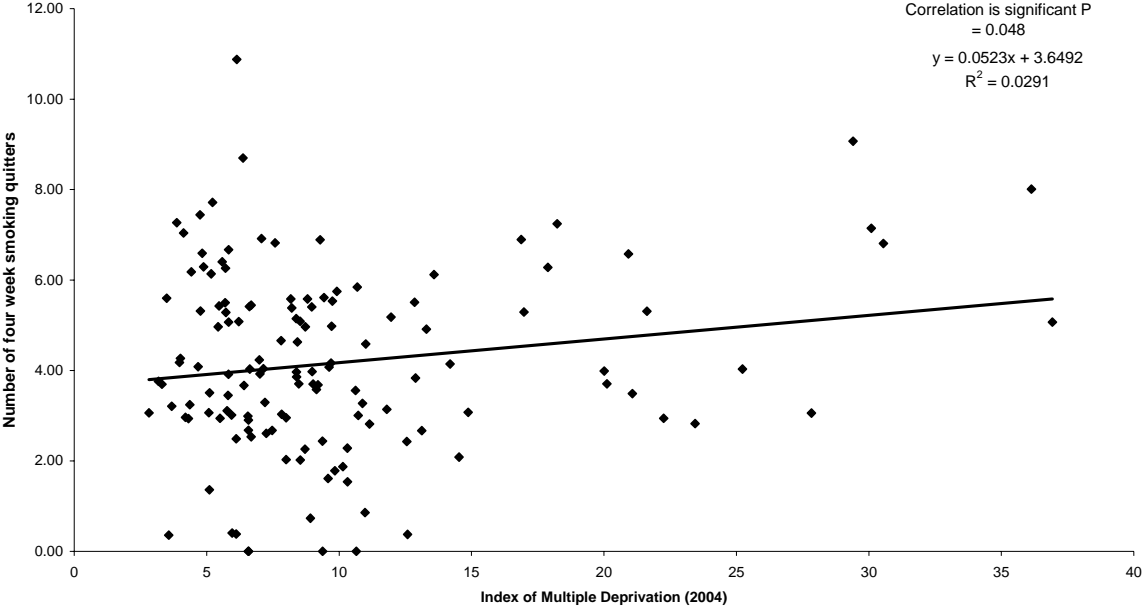
Oxfordshire PCT GP Practices - Patients aged 15-75 who smoke as a percentage of those recorded (March 2007) against Index of Multiple Deprivation (2004)



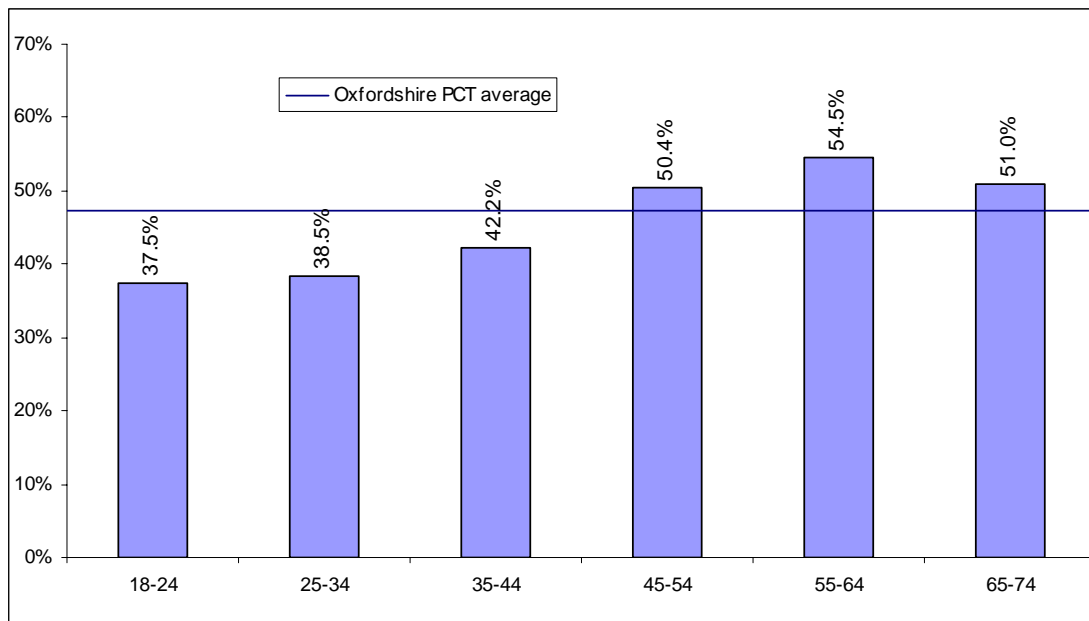
Oxfordshire wards - Four Week Smoking Quitters per 1000 residents (2005/06) against Index of Multiple Deprivation (2004)



Oxfordshire wards - Four Week Smoking Quitters per 1000 residents (2004/05) against Index of Multiple Deprivation (2004)

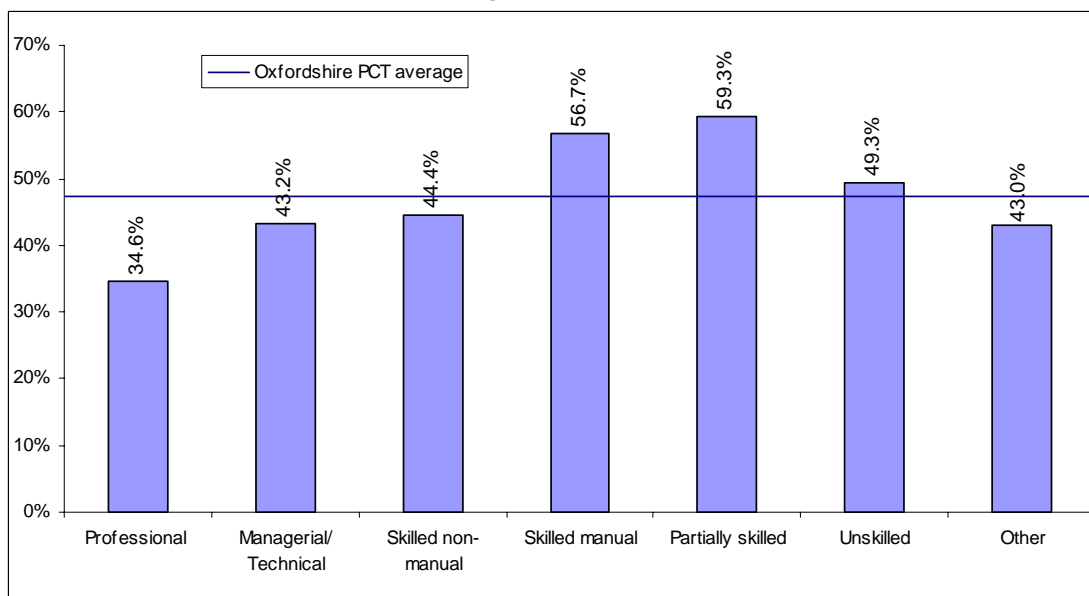


Current smokers in Oxfordshire PCT by age



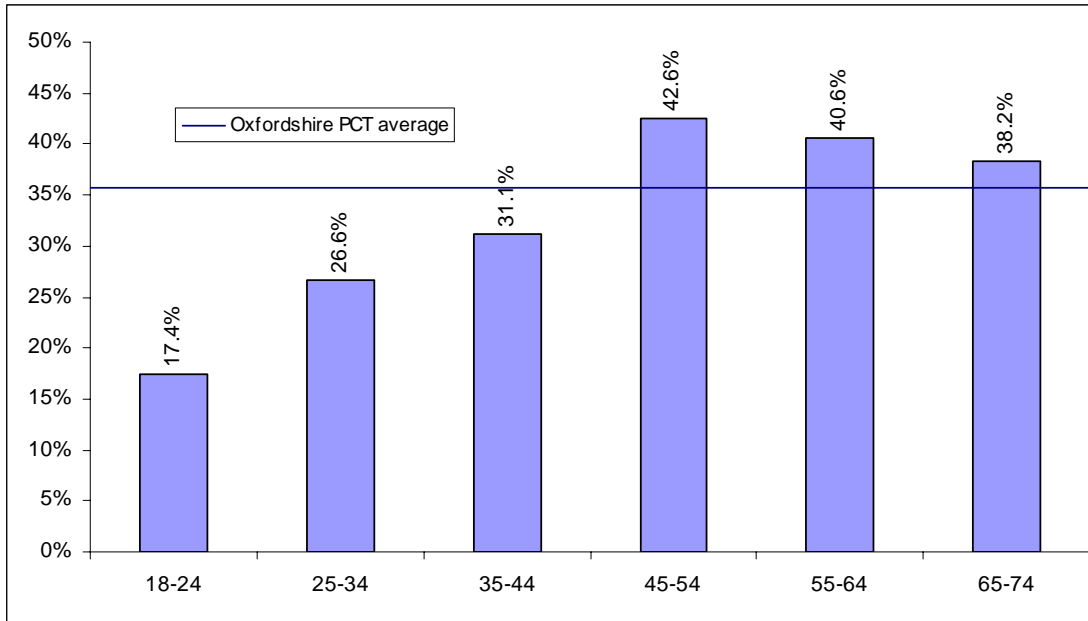
Source: Oxfordshire PCTs Healthy Lifestyle Survey 2005

Current smokers in Oxfordshire PCT by social class



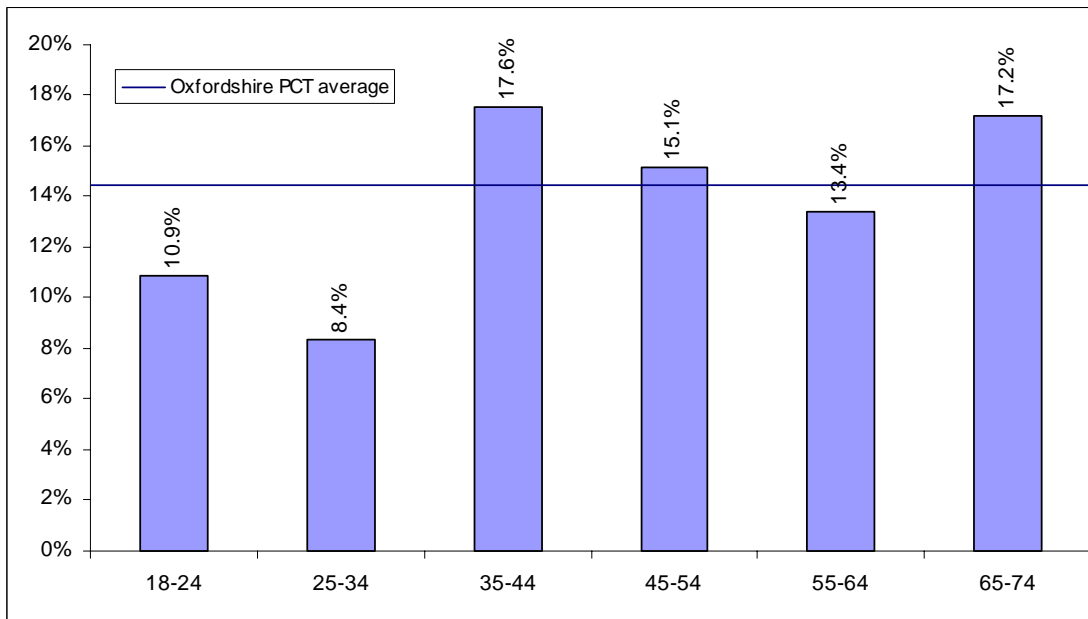
Source: Oxfordshire PCTs Healthy Lifestyle Survey 2005

Percentage of people in Oxfordshire PCT, aged 18-74 years, who are overweight



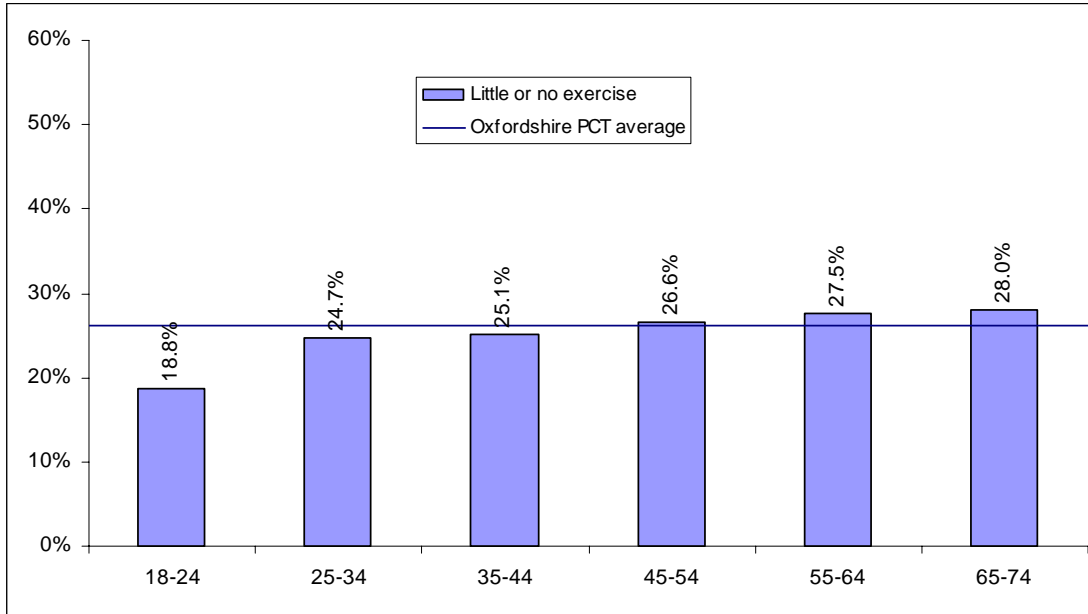
Source: Oxfordshire PCTs Healthy Lifestyle Survey 2005

Percentage of people in Oxfordshire PCT, aged 18 to 74 years, who are obese



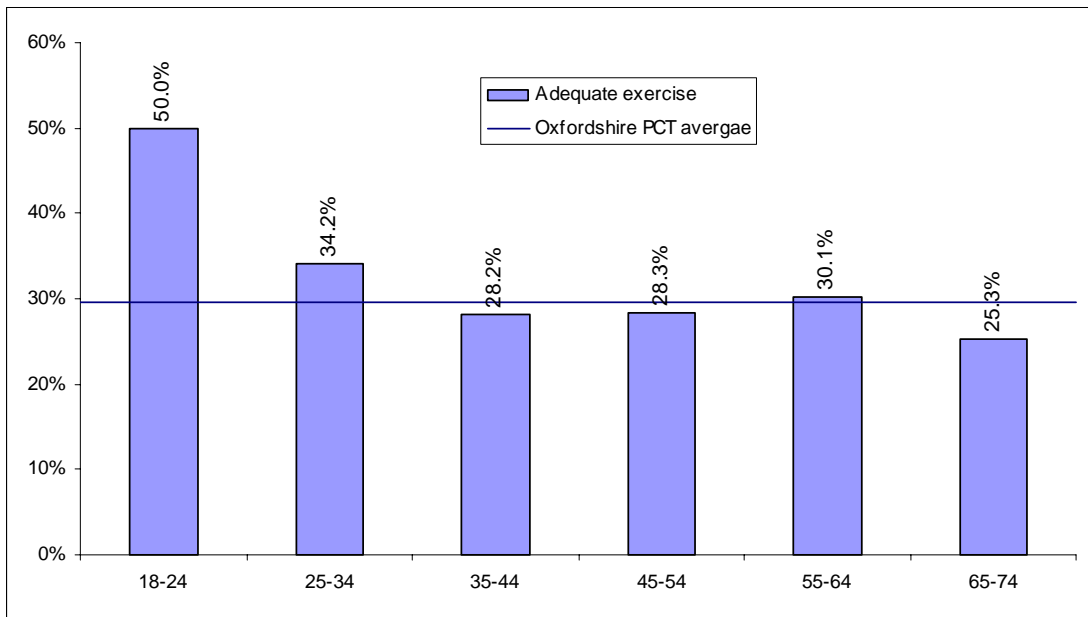
Source: Oxfordshire PCTs Healthy Lifestyle Survey 2005

Percentage of people in Oxfordshire PCT, aged 18 to 74, who are taking little or no exercise



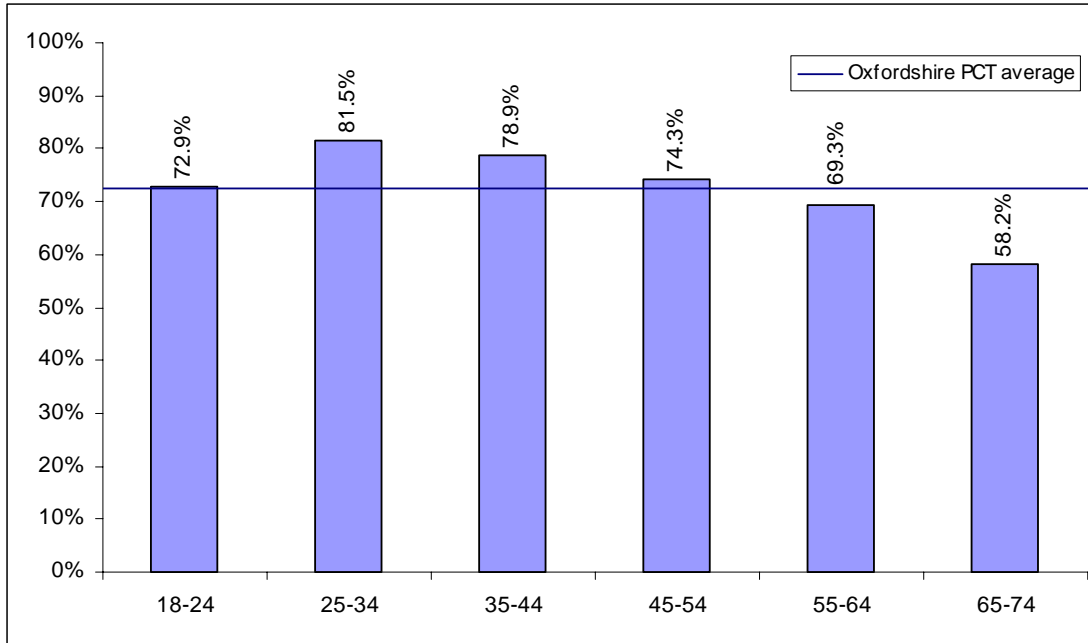
Source: Oxfordshire PCTs Healthy Lifestyle Survey 2005

Percentage of people in Oxfordshire, aged 18 to 74, who are taking adequate exercise



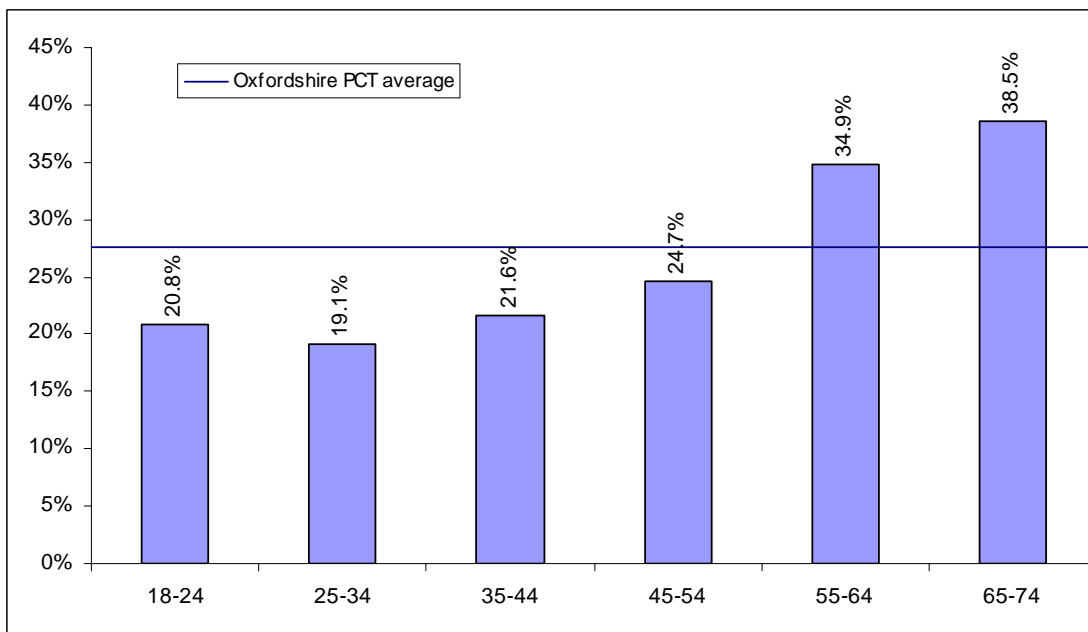
Source: Oxfordshire PCTs Healthy Lifestyle Survey 2005

Percentage of people in Oxfordshire PCT, aged 18 to 74, who would like to be more physically active



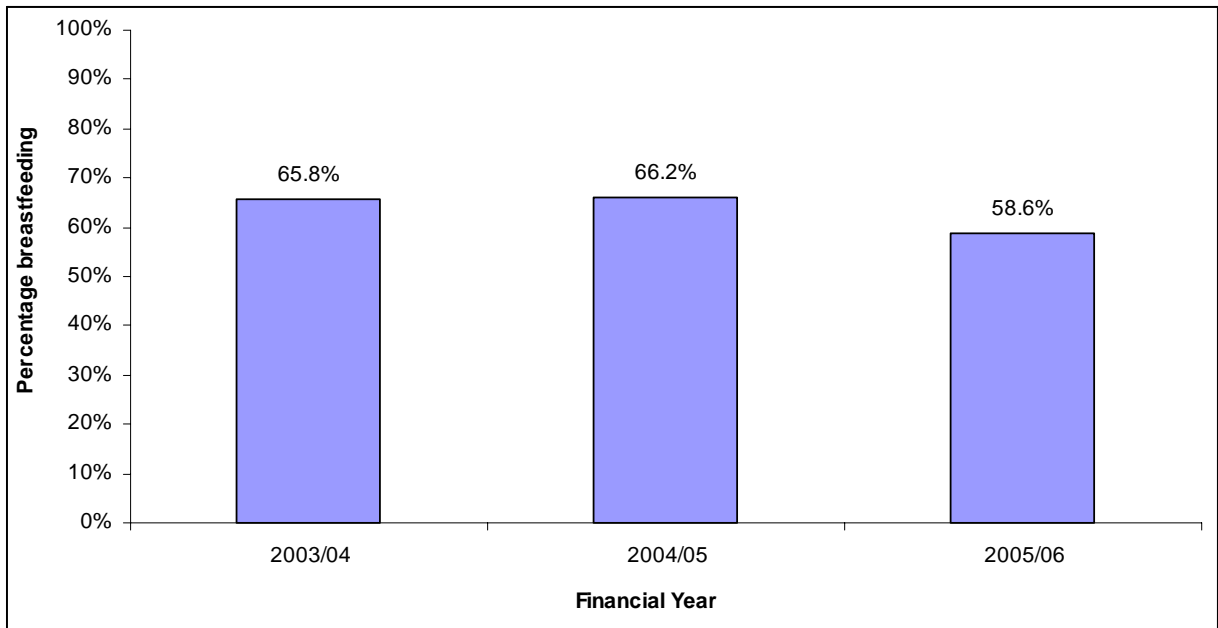
Source: Oxfordshire PCTs Healthy Lifestyle Survey 2005

Percentage of people in Oxfordshire PCT, aged 18 to 74, who eat 5 or more portions of fruit and vegetables per day



Source: Oxfordshire PCTs Healthy Lifestyle Survey 2005

Percentage of babies being breastfed at primary birth visit – 2003/04, 2004/05 and 2005/06

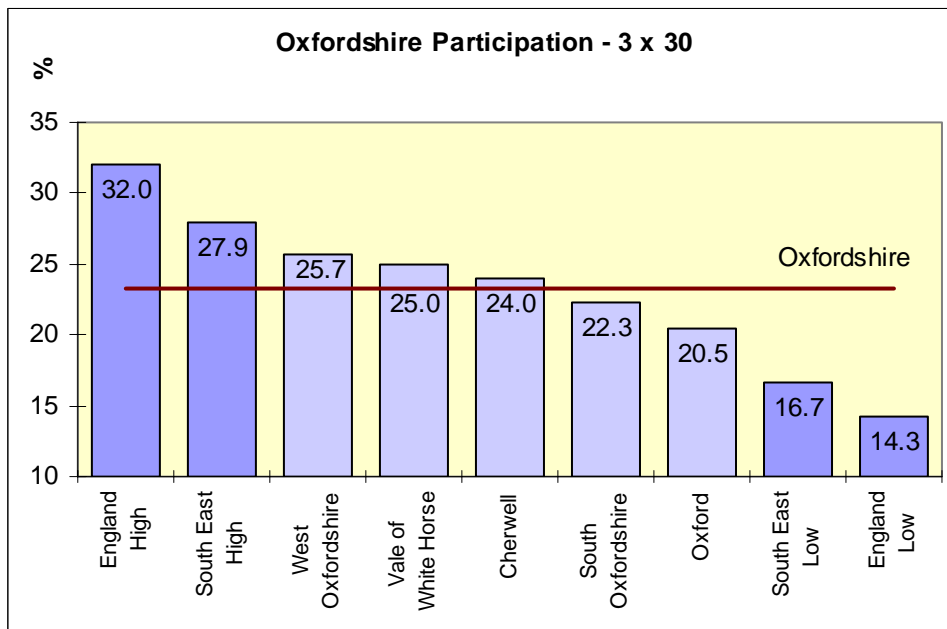


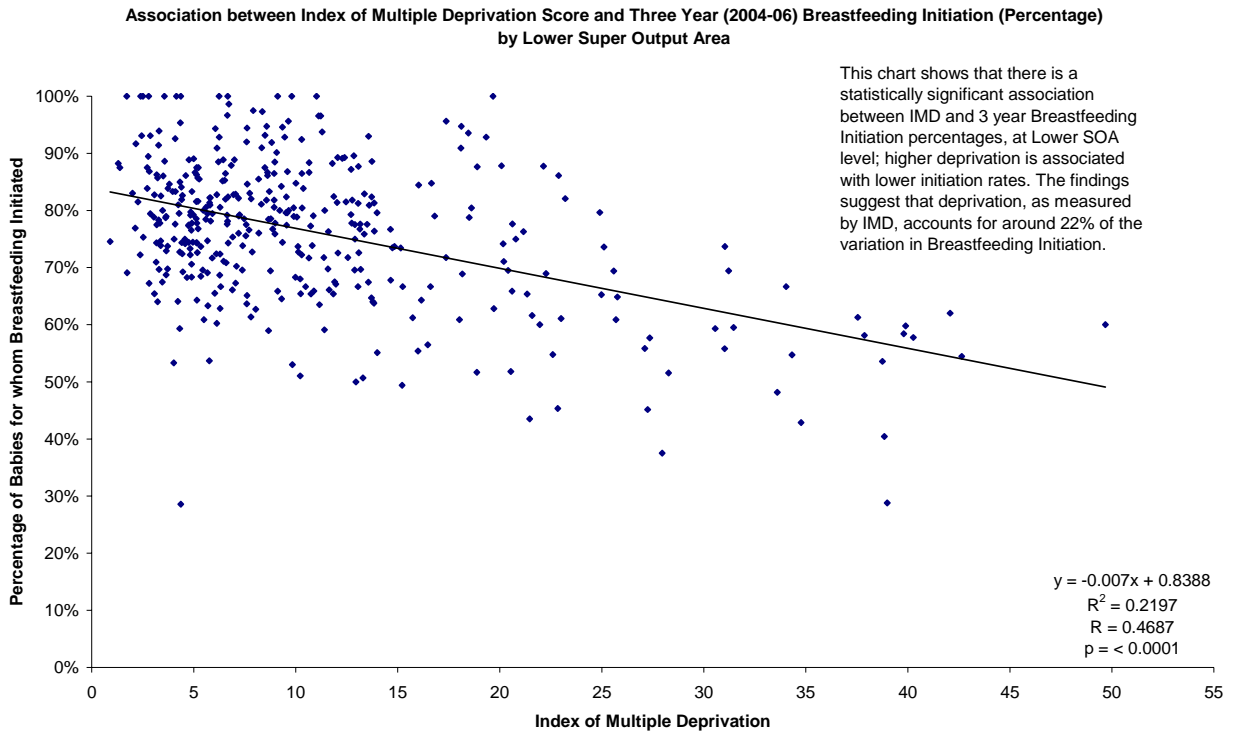
Source: Health visitors at GP practices

Participation in Activity

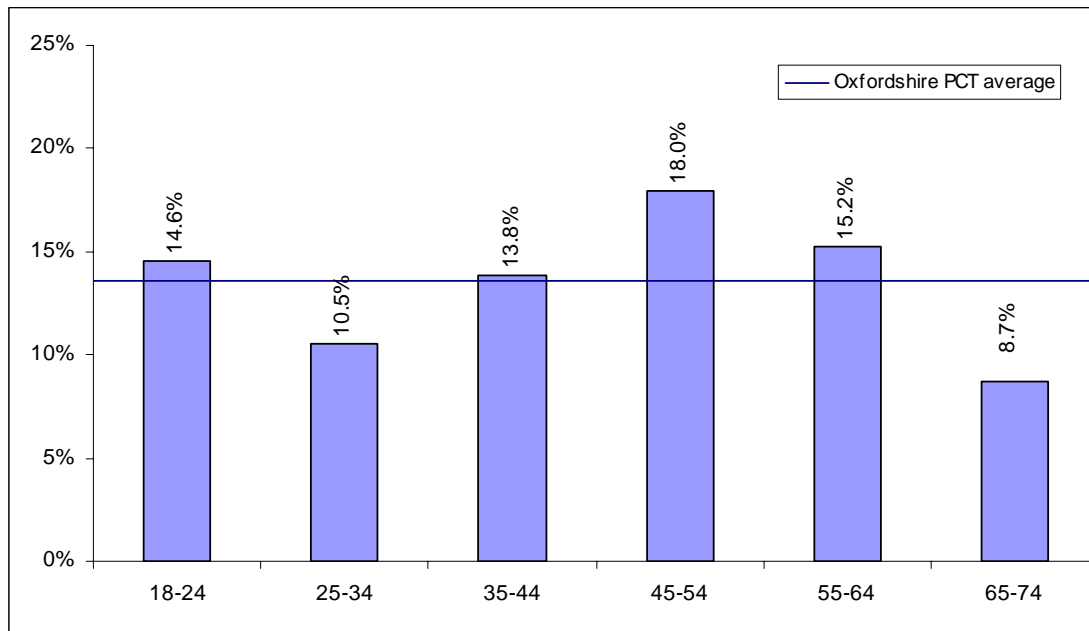
Source: Oxfordshire Sports Partnership www.oxonactivesports.co.uk

Number of people participating in at least 3 sessions of 30 minutes moderate intensity activity each week.



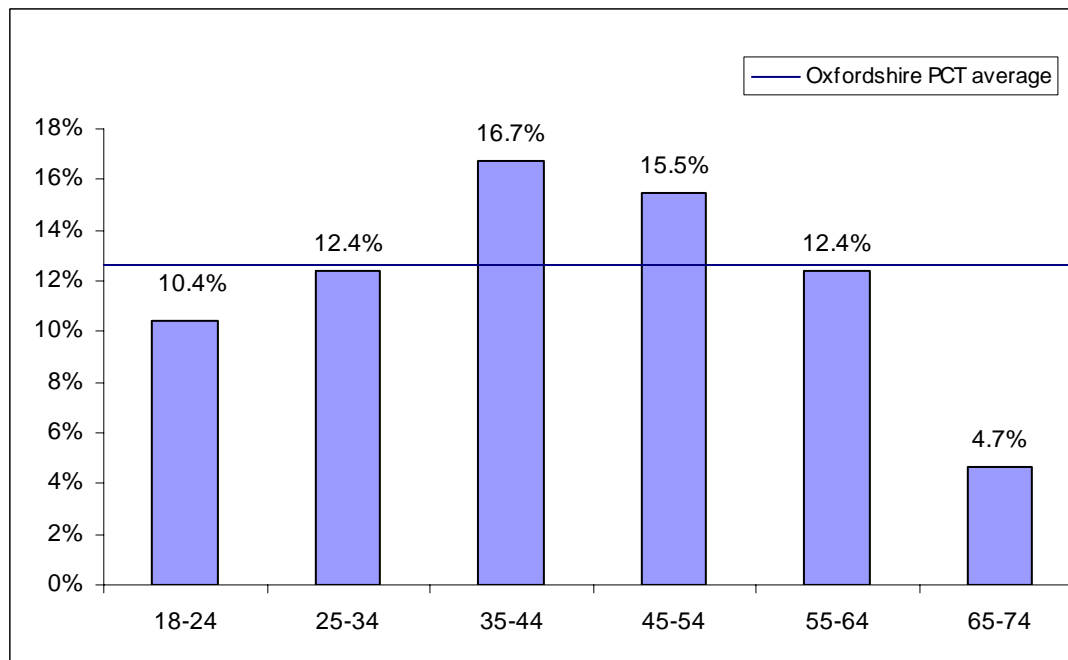


Percentage of people in Oxfordshire PCT, aged 18 to 74, who consume alcohol above the recommended levels



Source: Oxfordshire PCTs Healthy Lifestyle Survey 2005

Percentage of people in Oxfordshire PCT, aged 18 to 74, who would like to reduce their alcohol consumption



Source: Oxfordshire PCTs Healthy Lifestyle Survey 2005

Under 18 Conception Data 1998-2004, single years

	1998		1999		2000		2001		2002		2003		2004		2005		% change 1998 to 2004
	Number	Rate	Number	Rate	Number	Rate	Number	Rate	Number	Rate	Number	Rate	Number	Rate	Number	Rate	
England and Wales	44,119	47.1	42,028	45.1	41,348	43.9	40,990	42.7	41,951	42.8	42,173	42.3	42,150	41.7	42,187	41.3	-12.4%
England	41,089	46.6	39,247	44.8	38,699	43.6	38,461	42.5	39,350	42.6	39,560	42.1	39,545	41.5	39,683	41.1	-11.8%
SOUTH EAST	5,384	37.8	5,058	35.9	5,085	36.0	5,022	35.0	5,030	34.4	4,927	33.0	5,086	33.5	5,316	34.2	-9.6%
Oxfordshire	345	31.4	358	33.4	320	30.0	362	34.9	381	36.0	373	34.8	376	34.3	390	34.1	8.6%
Cherwell	78	31.7	85	35.0	79	32.9	90	37.8	96	38.7	87	35.0	107	42.6	105	40.2	26.9%
Oxford	110	43.6	105	42.0	89	36.7	122	55.8	140	61.8	121	53.4	106	46.2	122	50.7	16.3%
South Oxfordshire	46	20.6	59	26.6	45	20.7	55	25.5	56	26.1	47	21.7	54	24.4	47	20.8	0.8%
Vale of White Horse	59	26.8	53	25.0	62	30.5	54	26.1	53	25.3	59	27.0	61	27.3	59	25.5	-4.9%
West Oxfordshire	52	32.9	56	38.4	45	27.3	42	26.3	36	22.6	58	35.9	48	27.9	57	31.3	-4.8%

Source: Office for National Statistics

Under 18 conception data - 1995-1997 to 2002-2004 three year's pooled data

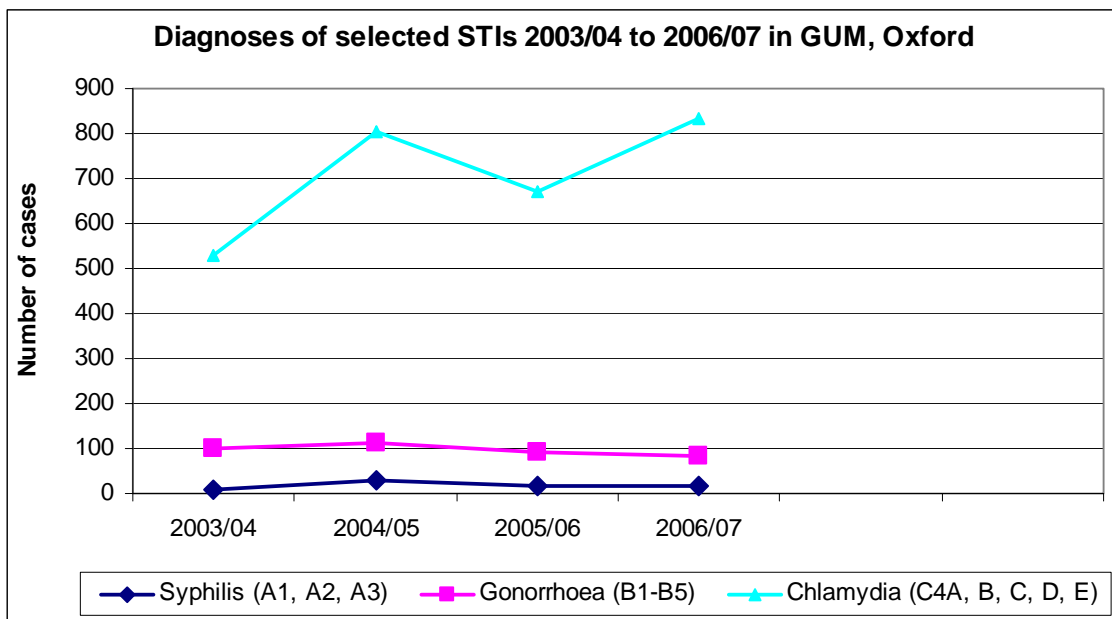
	1995-1997		1996-1998		1997-1999		1998-2000		1999-2001		2000-2002		2001-2003		2002-2004		2003-2005	
	Number	Rate	Number	Rate	Number	Rate	Number	Rate	Number	Rate	Number	Rate	Number	Rate	Number	Rate	Number	Rate
England and Wales	124,727	44.8	130,909	46.4	129,482	46.0	127,486	45.3	124,343	44.1	124,290	43.1	125,124	42.6	126,263	42.2	126,510	
England	116,391	44.4	122,053	46.0	120,777	46.0	119,026	44.9	116,386	43.8	116,511	42.9	117,382	42.4	118,448	42.0	118,829	41.6
Oxfordshire	955	29.9	1,058	32.4	1,060	32.3	1,023	30.9	1,060	32.3	1,064	33.6	1,117	35.3	1,129	35.0	1,138	34.4
Cherwell	247	33.9	257	34.6	251	33.4	242	31.8	254	35.4	265	36.5	273	37.2	290	38.8	299	39.3
Oxford	305	45.5	341	48.2	331	44.9	304	40	316	44.4	351	51.0	384	57.2	367	53.8	349	50.1
South Oxfordshire	137	21.6	149	22.6	149	22.2	150	22.2	159	24.5	156	24.1	158	24.4	157	24.1	148	22.3
Vale of White Horse	143	21.8	167	25.2	172	26.4	174	27.3	168	26.9	169	27.3	166	26.1	173	26.6	179	26.6
West Oxfordshire	123	24.8	144	29.2	157	33.7	153	31.8	143	30.2	123	25.4	136	28.3	142	28.8	163	31.6

Source: ONS

Age of mother at birth (Oxfordshire)

	Under 16	16-17 yrs	18-19 yrs	Total
1998	14	83	213	310
1999	7	78	190	275
2000	11	94	183	288
2001	10	93	228	331
2002	8	92	209	309
2003	14	83	231	328
2004	6	96	224	326
2005	6	107	216	329
2006	8	103	227	338

Source: Child Health Database



3 Older people

3.1 Summary

This section summarises some data to highlight particular conditions affecting older people. Details of all the data used in this section are set out in section 3.2.

Demographic change

Please refer to the Briefing Paper on population for the latest population projections (2007) for the county.

Falls

The data shows increases in attendance at Oxfordshire A&E departments by older people following a fall. This increase may be in part due to better data collection and more complete reporting of falls as the cause of injury rather than showing absolute increases in the number of falls. The highest rates of attendance are in the over 85 age group. The total number of people aged 65 and over who attended A&E after a fall in 2006-07 was just under 4000.

800 people aged over 65 were admitted to NHS hospitals in Oxfordshire in 2005-06 with fractured neck of femur which is a common result of a fall. This figure has been increasing each year. 134 of these admissions for fractures were from residents in nursing homes.

Excess winter death ratios significantly higher than the Oxfordshire average were recorded in seven wards in the county in 2005-06. This shows a higher number of deaths than would be expected.

Uptake of Winter Flu and Pneumococcal vaccines

In 2006-07 the uptake of winter flu vaccination was 75% in over 65s and in the under 65 year old population considered at risk (because of impaired immunity, for example) the rate was 45%. These were both above national averages. A rate of 75% uptake for pneumococcal vaccination in over 65s was also achieved in Oxfordshire. This is a one-off vaccination.

Care needs of older people

The current LAA stretch target aims to increase the number of older people being intensively supported to live in their own homes as an alternative to being in hospital. At the end of 2006-07 the total number of people being supported in this way was just under 1000. Work is also being done to increase the number of people able to purchase their own care through Direct Payments.

Carers

8.8% of the population of Oxfordshire provided unpaid care at the time of the 2001 census, slightly lower than the rate for England. A current LAA target is successfully increasing the number of self-assessments completed by carers so that their own needs for support can be reviewed. The data shows that a higher proportion of older people living in rural areas of the county provide unpaid care with seven areas ranked in the top 10% nationally.

The Briefing Paper on Learning and Skills (Number 5 in this series) forecasts a 23% increase in the number of people employed in Caring and Personal Service occupations between 2004 and 2014, giving an increase of over 9000 people employed in this sector. It is also projected that a further 900 will be added to the workforce in Health and Social Welfare Associate Professionals over this time, which is a 4% increase, and 1600 additional health professionals (27% increase). (Source: Briefing paper 5).

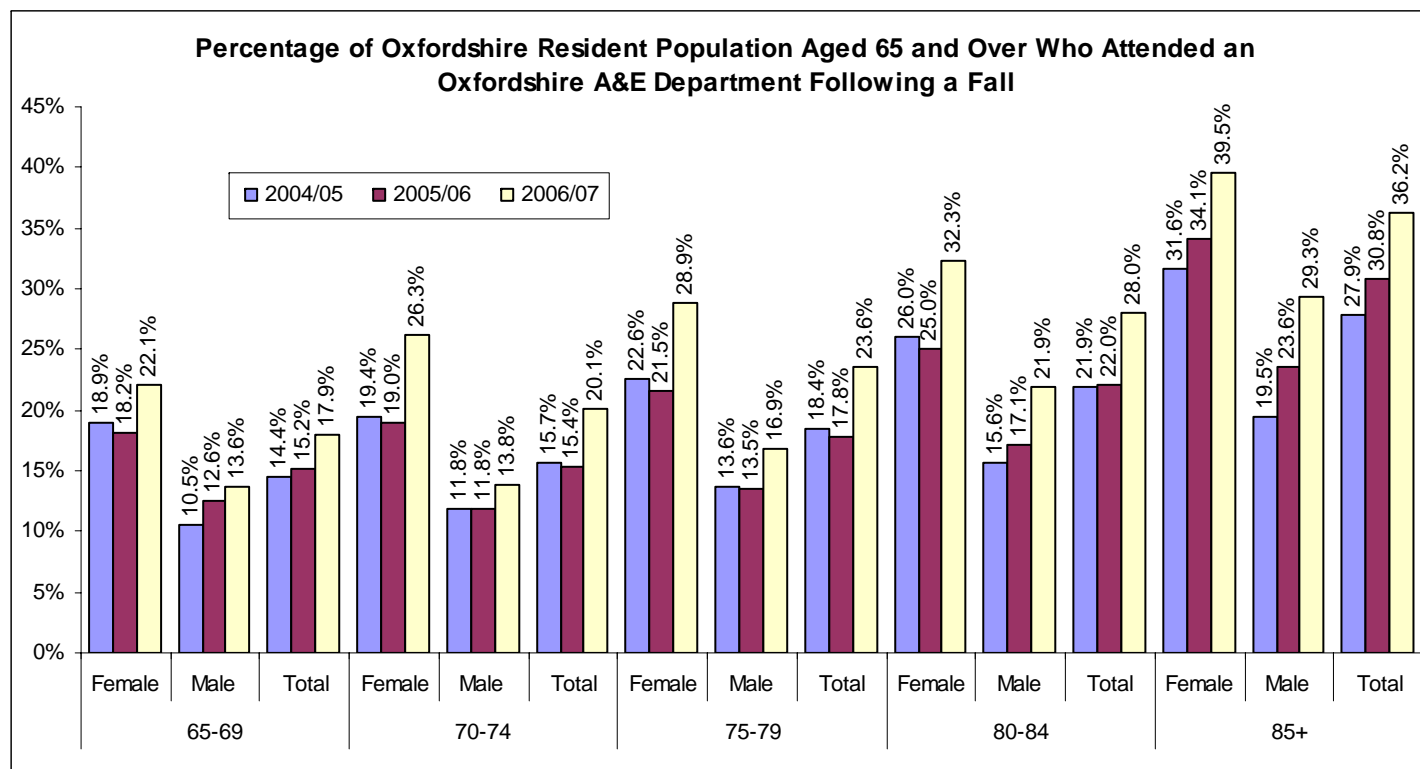
3.2 Data Tables

Percentage of Oxfordshire Resident Population Aged 65 and Over Who Attended an Oxfordshire A&E Department* Following a Fall

*Dataset includes attendances at A&E Departments at John Radcliffe, Horton General and the Radcliffe Infirmary

		All attendances			Number of Attendances following falls			Percentage of Attendances following falls 65+		
		2004/05	2005/06	2006/07	2004/05	2005/06	2006/07	2004/05	2005/06	2006/07
65-69	Female	1364	1364	1369	258	248	303	18.9%	18.2%	22.1%
	Male	1537	1525	1357	161	192	185	10.5%	12.6%	13.6%
	Total	2901	2889	2726	419	440	488	14.4%	15.2%	17.9%
70-74	Female	1602	1428	1280	311	271	336	19.4%	19.0%	26.3%
	Male	1500	1462	1249	177	173	172	11.8%	11.8%	13.8%
	Total	3102	2890	2529	488	444	508	15.7%	15.4%	20.1%
75-79	Female	1720	1724	1594	388	371	460	22.6%	21.5%	28.9%
	Male	1511	1496	1257	206	202	212	13.6%	13.5%	16.9%
	Total	3231	3220	2851	594	573	672	18.4%	17.8%	23.6%
80-84	Female	2127	1969	1777	553	493	574	26.0%	25.0%	32.3%
	Male	1372	1220	1256	214	209	275	15.6%	17.1%	21.9%
	Total	3499	3189	3033	767	702	849	21.9%	22.0%	28.0%
85+	Female	2489	2595	2604	786	885	1029	31.6%	34.1%	39.5%
	Male	1101	1193	1259	215	282	369	19.5%	23.6%	29.3%
	Total	3590	3788	3863	1001	1167	1398	27.9%	30.8%	36.2%

Source: Oxfordshire Injury Surveillance

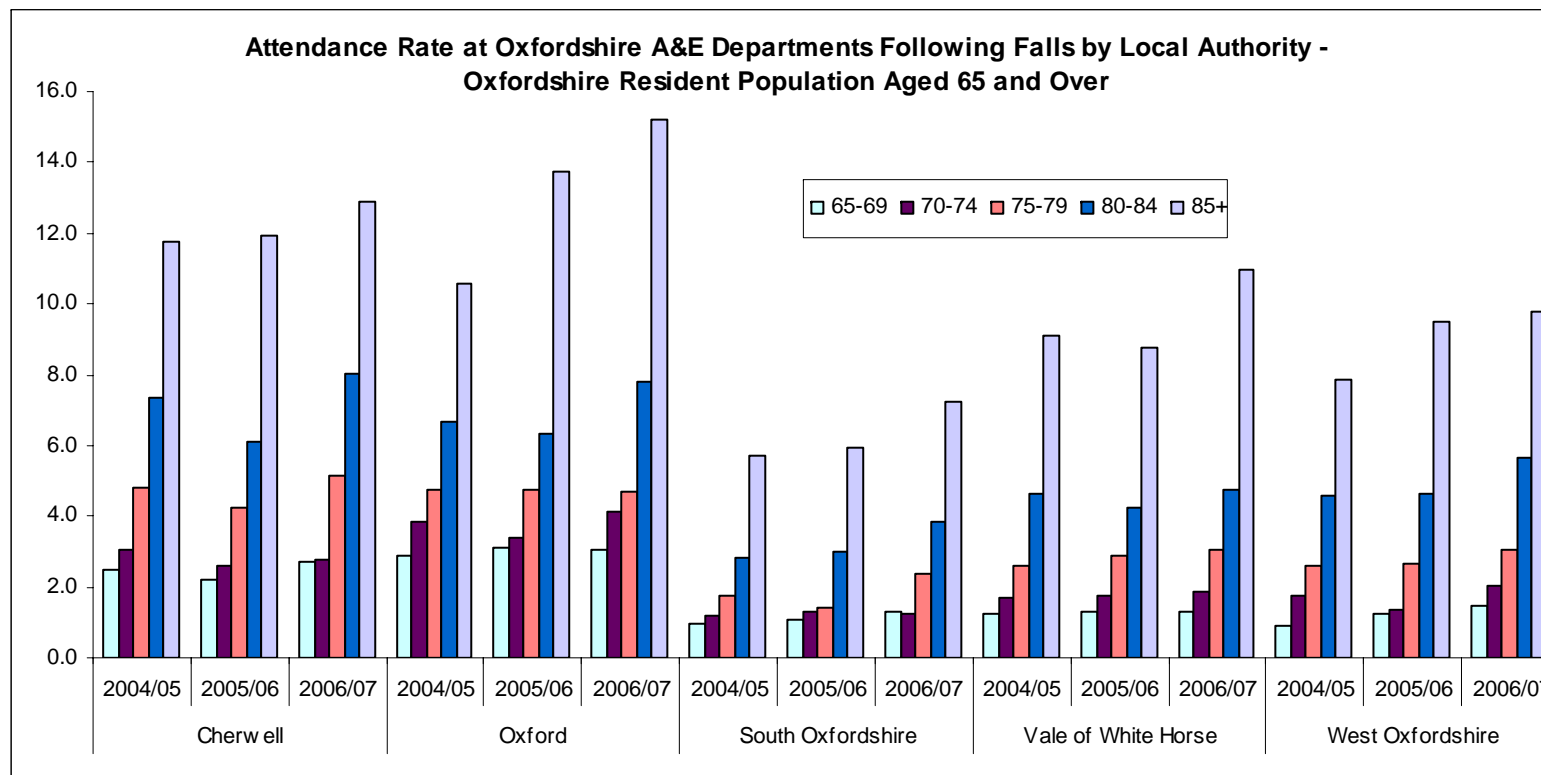


Attendance Rate at Oxfordshire A&E Departments* Following Falls by Local Authority - Oxfordshire Resident Population Aged 65 and Over

*Dataset includes attendances at A&E Departments at John Radcliffe, Horton General and the Radcliffe Infirmary

		Number of attendances					Population					Attendance rate per 100 population				
		65-69	70-74	75-79	80-84	85+	65-69	70-74	75-79	80-84	85+	65-69	70-74	75-79	80-84	85+
Cherwell	2004/05	136	140	179	217	263	5452	4582	3704	2947	2236	2.5	3.1	4.8	7.4	11.8
	2005/06	124	121	162	180	284	5600	4620	3826	2940	2385	2.2	2.6	4.2	6.1	11.9
	2006/07	154	130	202	231	337	5645	4663	3946	2878	2610	2.7	2.8	5.1	8.0	12.9
Oxford	2004/05	122	148	165	200	239	4252	3832	3477	2989	2266	2.9	3.9	4.7	6.7	10.5
	2005/06	128	126	159	180	319	4146	3728	3365	2839	2318	3.1	3.4	4.7	6.3	13.8
	2006/07	121	149	155	213	363	3955	3633	3310	2735	2390	3.1	4.1	4.7	7.8	15.2
South Oxfordshire	2004/05	55	57	69	90	142	5817	4874	3929	3177	2498	0.9	1.2	1.8	2.8	5.7
	2005/06	65	64	56	94	154	5925	4959	3960	3124	2599	1.1	1.3	1.4	3.0	5.9
	2006/07	78	63	96	120	197	5945	5042	4028	3124	2721	1.3	1.2	2.4	3.8	7.2
Vale of White Horse	2004/05	66	77	94	140	197	5198	4545	3645	3035	2160	1.3	1.7	2.6	4.6	9.1
	2005/06	67	81	106	124	203	5210	4567	3683	2935	2320	1.3	1.8	2.9	4.2	8.8
	2006/07	67	85	113	135	270	5121	4562	3716	2847	2466	1.3	1.9	3.0	4.7	10.9
West Oxfordshire	2004/05	40	66	87	120	161	4463	3808	3349	2623	2056	0.9	1.7	2.6	4.6	7.8
	2005/06	57	52	90	124	209	4598	3873	3379	2662	2197	1.2	1.3	2.7	4.7	9.5
	2006/07	69	81	106	150	231	4670	4012	3464	2643	2355	1.5	2.0	3.1	5.7	9.8

Source: Oxfordshire Injury Surveillance. Population data: Oxfordshire County Council



Non Elective Inpatient Admissions for Patients aged 65 and over with a Primary Diagnosis of S72 (Fractured Neck of Femur)

Oxfordshire PCT residents

Private patients excluded

2006/07 rate is based on two quarters of data only and multiplied by two to obtain an annual rate

Admissions

	2003-04	2004-05	2005-06	2006-07
Females	508	493	499	304
Males	123	157	135	100
Total	690	781	800	491

Emergency admissions of patients aged 65+ years with a primary diagnosis of Fractured Neck of Femur (ICD10 S72*)

Year	Sex	Cherwell Vale PCT	NE Oxon PCT	Oxford City PCT	SE Oxon PCT	SW Oxon PCT	Oxfordshire
2001 – 02	Female	97	56	134	83	103	473
	Male	18	11	22	18	30	99
	Total	115	67	156	101	133	572
2002-03	Female	88	62	141	73	133	497
	Male	29	9	34	23	33	128
	Total	117	71	175	96	166	625
2003-04	Female	109	54	137	89	146	535
	Male	27	12	42	17	40	138
	Total	136	66	179	106	186	673
2004 -05	Female	107	53	119	89	140	508
	Male	34	19	46	24	52	172
	Total	141	72	162	113	192	680
2005-06	Female	93	62	136	74	174	539
	Male	32	18	37	16	40	143
	Total	125	80	173	90	214	682

Top ten reasons for admissions into hospital (Aug 05-Sept 06) of Oxfordshire PCT registered patients who are resident of Nursing Homes

Primary Diagnosis	Number of Admissions	Length of stay (days)
End-stage renal disease	657	406
Urinary tract infection, site not specified	72	731
Fracture of neck of femur	65	914
Unspecified acute lower respiratory infection	54	542
Pneumonia, unspecified	48	408
Cataract, unspecified	43	5
Syncope and collapse	30	82
Non-Hodgkin's lymphoma, unspecified type	27	36
Pertrochanteric fracture	23	324
Chest pain, unspecified	22	26
Total of top ten admissions	1041	3474
Total admissions for ALL diagnoses	2265	20415

The most frequent diagnosis for admissions is end-stage renal disease followed by urinary tract infection.

Excess Winter Death Ratio (Observed : Expected): Winters 1999/00 to 2005/06 (data range: Aug 1999 to Jul 2006)

The following wards have an EWD ratio significantly higher than both the Oxfordshire ratio and the relevant LA ratio

Otmoor	Cherwell
Thame North	South Oxfordshire
Berinsfield	South Oxfordshire

The following wards have an EWD ratio significantly higher than the Oxfordshire ratio

Banbury Neithrop	Cherwell
Abingdon Fitzharris	Vale of White Horse
Milton-under-Wychwood	West Oxfordshire
Hailey Minster Lovell & Leafield	West Oxfordshire

The following wards have an EWD ratio significantly lower than both the Oxfordshire ratio and the relevant LA ratio

Hanneys	Vale of White Horse
Charlbury & Finstock	West Oxfordshire
Chadlington & Churchill	West Oxfordshire

The following wards have an EWD ratio significantly lower than the Oxfordshire ratio

Northfield Brook	Oxford
Quarry & Risinghurst	Oxford
St Margaret's	Oxford
Didcot Park	South Oxfordshire
Henley North	South Oxfordshire
Wheatley	South Oxfordshire

Provision of unpaid care in Oxfordshire

	Percentage of people who provide some level of unpaid care			
	Any level of unpaid care	1-19 hours a week	20-49 hours a week	50 or more hours a week
ENGLAND AND WALES	10.0%	6.8%	1.1%	2.1%
ENGLAND	9.9%	6.8%	1.1%	2.0%
SOUTH EAST	9.2%	6.8%	0.8%	1.6%
Oxfordshire	8.8%	6.7%	0.8%	1.4%
Cherwell	8.7%	6.4%	0.8%	1.5%
Oxford	7.8%	5.8%	0.8%	1.3%
South Oxfordshire	9.2%	7.2%	0.7%	1.3%
Vale of White Horse	9.4%	7.2%	0.7%	1.5%
West Oxfordshire	9.2%	7.1%	0.8%	1.3%

Source: 2001 Census © Crown Copyright 2003

Summary of Carers Statistics**National**

- 5.2 million carers in England & Wales (Census) = 1 in 8 of the population
- 1.2 million carers care for over 50 hours per week
- 42% of carers are men
- Every day, another six thousand people take on a caring responsibility
- Over 3 in 5 people in the UK will become carers at some time in their lives
- Estimated 175,000 carers under the age of 18 in the UK
- Estimated value of carer support = £57 billion (Carers UK, 2001) equivalent to the total of UK spending on health
- $\frac{3}{4}$ carers worse off financially because of caring role
- Carers who provide high levels of care, more than twice likely to suffer from poor health than people without caring responsibilities – back injury, high blood pressure, depression, stress, nervous tensions, headaches, panic attacks
- Typically, a GP practice with 2000 patients will include 200 carers, 67 of which will be caring for more than 20 hours per week, 40 caring from more than 50 hours per week.

Oxfordshire

- 53,000 carers in Oxfordshire (8.8%)
- 9.8% (23,300) of people in rural areas were providing unpaid care (Census)
- Seven areas of rural Oxfordshire ranked in the top 10% nationally on % of people providing unpaid care:

Lower Super Output Area name	District	People providing unpaid care, 2001 Count	People providing unpaid care, 2001 Rate
Kidlington North E01028489 (C)	Cherwell	221	15.70%
Faringdon and The Coxwells E01028719 (VWH)	Vale of White Horse	213	14.04%
Sunningwell and Wootton E01028751 (VWH)	Vale of White Horse	201	13.75%
Chiltern Woods E01028612 (SO)	South Oxfordshire	159	13.70%
Sonning Common E01028662 (SO)	South Oxfordshire	159	13.42%
Chinnor E01028615 (SO)	South Oxfordshire	200	13.20%
Sonning Common E01028665 (SO)	South Oxfordshire	173	13.07%
Wheatley E01028683 (SO)	South Oxfordshire	170	12.43%
Kennington and South Hinksey E01028733 (VWH)	Vale of White Horse	158	12.35%
Wantage Segsbury E01028760 (VWH)	Vale of White Horse	165	12.30%
Shiplake E01028659 (SO)	South Oxfordshire	190	12.29%
Grove E01028723 (VWH)	Vale of White Horse	183	12.23%
Wheatley E01028682 (SO)	South Oxfordshire	150	12.22%
Adderbury E01028423 (C)	Cherwell	171	12.17%
Eynsham and Cassington E01028787 (WO)	West Oxfordshire	154	12.03%
Standlake, Aston and Stanton Harcourt E01028802 (WO)	West Oxfordshire	157	11.94%
Kidlington South E01028491 (C)	Cherwell	173	11.93%
Deddington E01028481 (C)	Cherwell	169	11.89%
Thame South E01028672 (SO)	South Oxfordshire	173	11.89%
Kennington and South Hinksey E01028735 (VWH)	Vale of White Horse	178	11.81%
Grove E01028722 (VWH)	Vale of White Horse	176	11.78%
Wantage Charlton E01028758 (VWH)	Vale of White Horse	184	11.72%
Witney Central E01028807 (WO)	West Oxfordshire	134	11.71%
Wantage Charlton E01028755 (VWH)	Vale of White Horse	186	11.71%

Within top 10% nationally

Within top 20% nationally

- Analysis of unpaid carers by age shows a difference between rural and urban Oxfordshire, with a higher proportion of older people living in rural areas providing unpaid care.
- The age group with the biggest difference is 60-64 year olds where 19.3% of those living in rural Oxfordshire provide unpaid care compared with 17.4% of those living in urban areas.

Sources of data

- Best Practice, Better Practices – report by Princess Royal Trust for Carers
- Understanding rural Oxfordshire – Health briefing paper
- www.carers.org/professionals
- Census 2001 data

4 Long term conditions

4.1 Summary

Mental health

The Suicide Audit Report for 2004-05 shows that nationally suicide is higher than road accidents in causing death among men below 35 years old. Oxfordshire figures show a decrease in the total number of deaths from suicide or undetermined injury from 59 in 1998 to 40 in 2003. The highest number was 69 in 2002 and there are annual variations rather than a consistent downward trend.

Diabetes

The total number of diabetes patients in the county as recorded by GPs on 1st may 2007 is 17,799, an overall prevalence of 2.7% of the population registered with Oxfordshire GPs.

The number of hospital stays for people with complications of diabetes is over 500 cases a year. The figures for 2006 show a decrease (560 in 2005 and 563 in 2004). In these three years the age group most likely to need hospital treatment for complications of diabetes are people aged 65 – 74 years.

Outpatient appointments within diabetic medicine have increased sharply, with over 12000 appointments in 2006 compared with 6300 in 2005 and 5100 in 2004. People aged 55 – 64 are the highest users of this service, closely followed by 65-74 year olds.

Cancer

The mortality rate for all cancers in Oxfordshire is significantly lower than for England and Wales. Cherwell and Oxford City have higher rates than the rest of the county. Mortality rates for breast cancer are significantly higher than for England and Wales

Long term conditions

Suicide is a major public health issue in Britain, with around 5,000 people taking their own lives each year. Encouragingly, 2003 witnessed the lowest number of suicides in the UK since 1973. However, in younger age groups, especially among males below 35 years, suicide has outranked motorcar accidents as the most frequent cause of mortality.

The number of recorded suicides among Oxfordshire PCTs' residents is relatively small, with large variations from year to year. In 2002 there was an increase in local suicides, with a notable decrease, in line with the national trend, in 2003

4.2 Data Tables

Number of deaths from suicide and undetermined injury by Primary Care Trust by year

PCT	1996	1997	1998	1999	2000	2001	2002	2003
Cherwell Vale	8	14	11	8	11	6	14	4
North East	7	4	3	4	4	5	13	3
Oxford City	18	12	16	24	6	21	18	11
South East	5	8	6	3	8	8	8	5
South West	21	15	13	17	20	14	16	17
Total	59	53	49	56	49	54	69	40

Actual registered suicide deaths known up to 2003 – delete this. Source: Public Health Mortality File 1996-2003 (using date of registered death)

Direct age & sex standardised mortality rate per 100,000 population

PCT	1996	1997	1998	1999	2000	2001	2002	2003	2004	2005	2006	2007	2008	2009	2010
Cherwell Vale	8.9	7.8	6.5	5.6	5.8	7.9	7.5	7.5	7.4	7.4	7.3	7.3	7.2	7.2	7.1
North East	9.7	7.7	6.6	5.8	6.5	8.7	8.5	8.4	8.3	8.2	8.1	8.1	8.0	7.9	7.8
Oxford City	12.2	10.4	11.6	9.4	11.2	9.8	11.0	10.9	10.7	10.6	10.4	10.3	10.1	10.0	9.8
South East	7.1	6.5	6.3	7.5	7.8	9.3	7.6	7.3	7.1	6.9	6.6	6.4	6.2	5.9	5.7
South West	9.3	9.4	8.2	8.3	7.8	8.9	8.6	8.5	8.3	8.2	8.0	7.9	7.7	7.6	7.4

(Note: Each data point is a three year average, so the 2001 rate is a three year average of 2000- 2002. Actual registered deaths known up to 2003) Source: Public Health Mortality File; ONS LA mid-year estimates apportioned to PCTs; European Standard Population

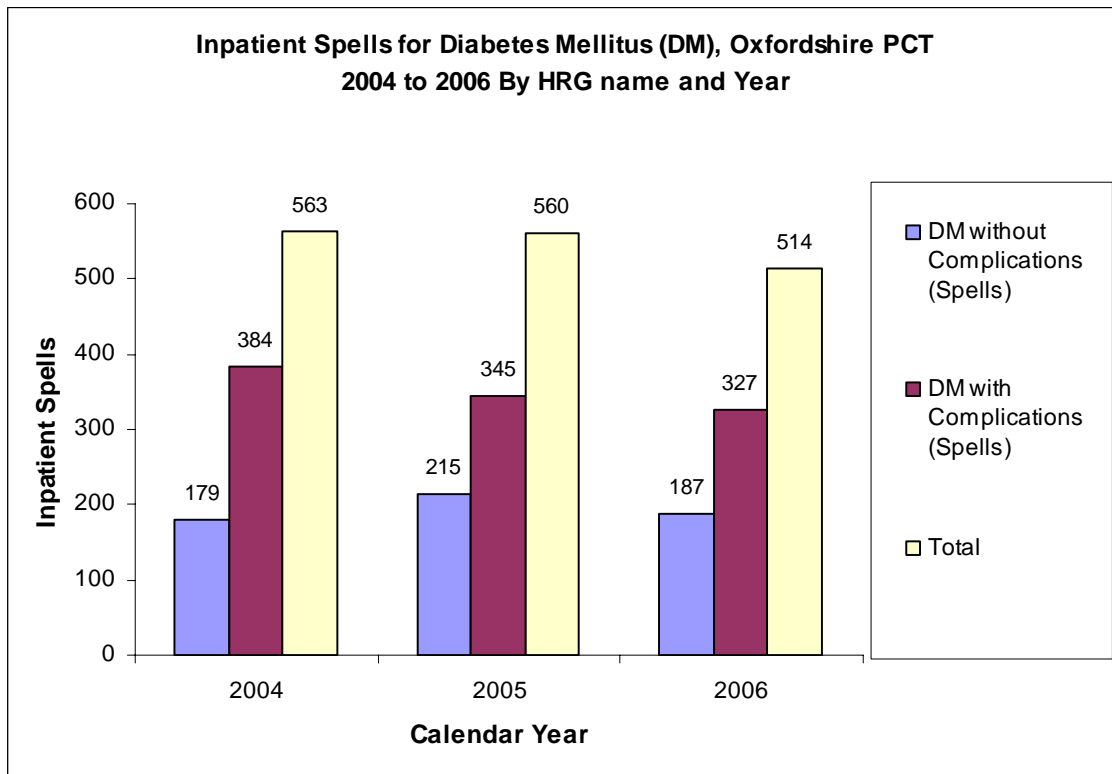
For performance monitoring purposes, the Department of Health look at mortality rates at Strategic Health Authority level due to small numbers involved. All PCTs within the Thames Valley area are required to contribute to the 20% reduction. The mortality rates in Table 2 have been calculated by apportioning Local Authority data from ONS to the geographic areas of PCTs. These rates are for local use only and are provided to assess progress towards the target. A county mortality rate which was included in the last version of the suicide audit is now not available from ONS.

Given the small numbers involved, Figure 2 below, which charts the suicide trend over the last seven years by PCTs, needs to be treated with caution.

**Inpatient Spells for Diabetes Mellitus (DM)
Oxfordshire PCT
2004 to 2006
By Healthcare Resource Group (HRG) name and Year**

Year (Calendar)	DM without Complications (Spells)	DM with Complications (Spells)	Total
2004	179	384	563
2005	215	345	560
2006	187	327	514

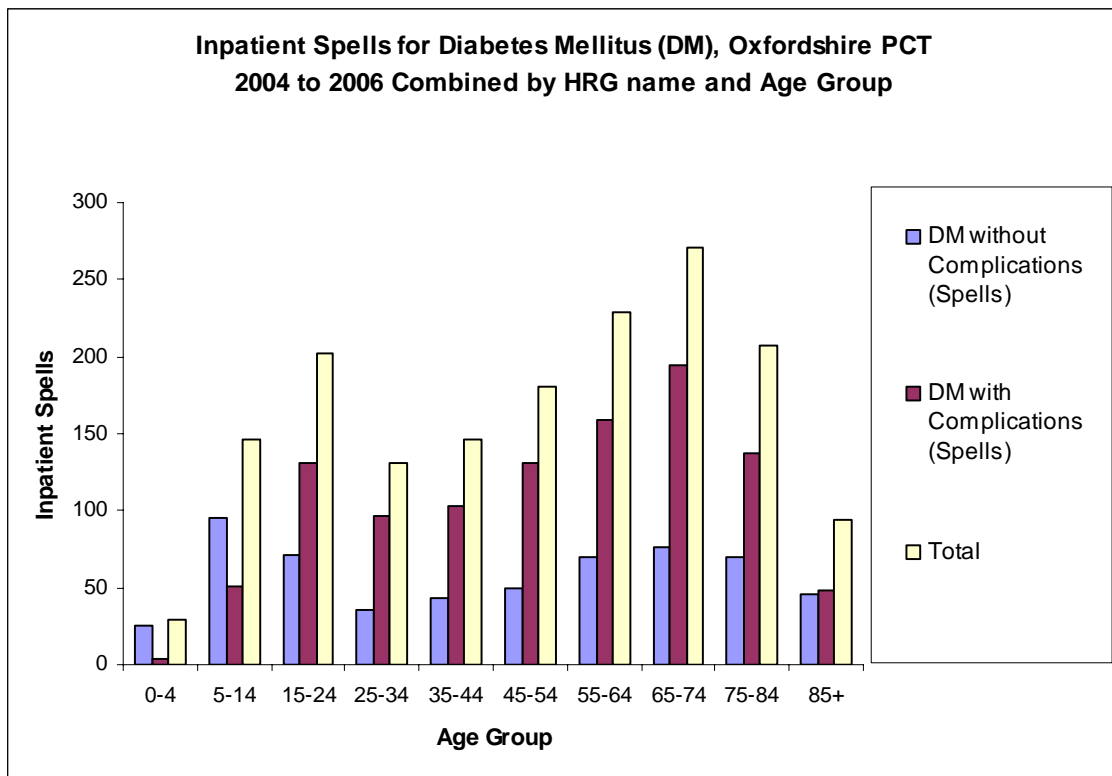
Source: Dr Foster



**Inpatient Spells for Diabetes Mellitus (DM)
Oxfordshire PCT
2004 to 2006 combined
By HRG name and Age Group**

Age Group	DM without Complications (Spells)	DM with Complications (Spells)	Total
0-4	25	4	29
5-14	95	51	146
15-24	71	131	202
25-34	35	96	131
35-44	43	103	146
45-54	50	131	181
55-64	70	159	229
65-74	76	195	271
75-84	70	137	207
85+	46	48	94

Source: Dr Foster



Outpatient Appointments within Diabetic Medicine

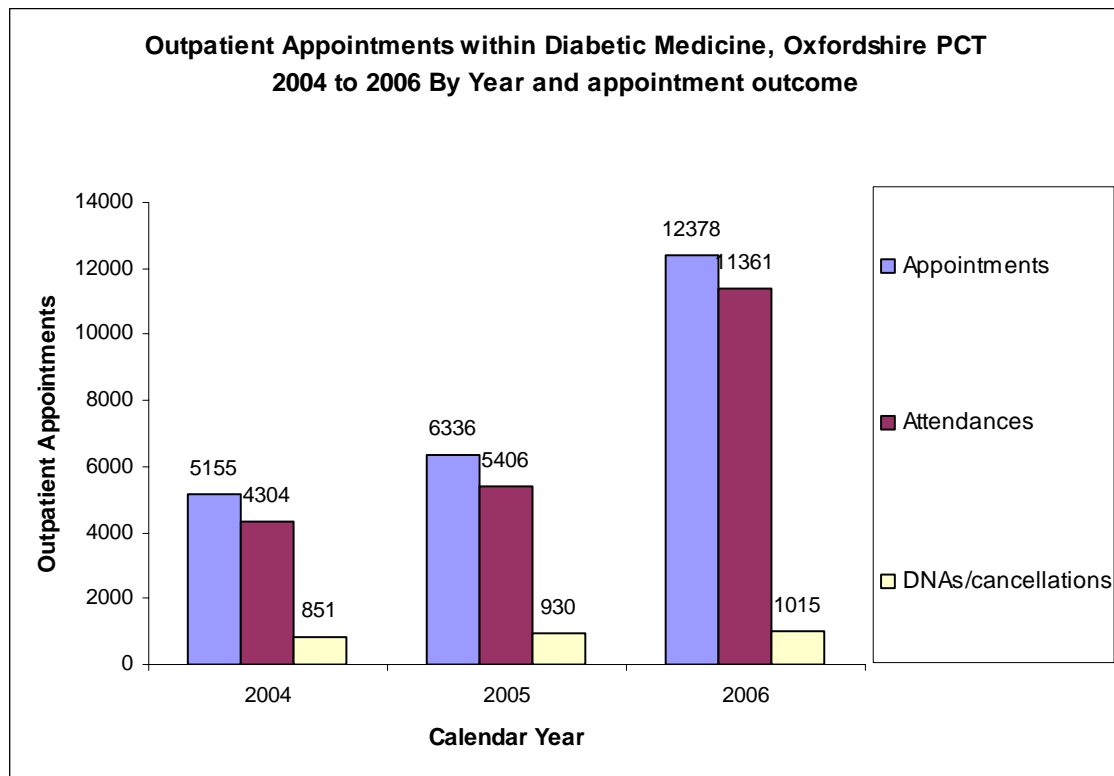
Oxfordshire PCT

2004 to 2006

By Year and appointment outcome (attendance, Did Not Attend (DNA), cancellation)

Year (Calendar)	Appointments	Attendances	DNAs/cancellations
2004	5155	4304	851
2005	6336	5406	930
2006	12378	11361	1015

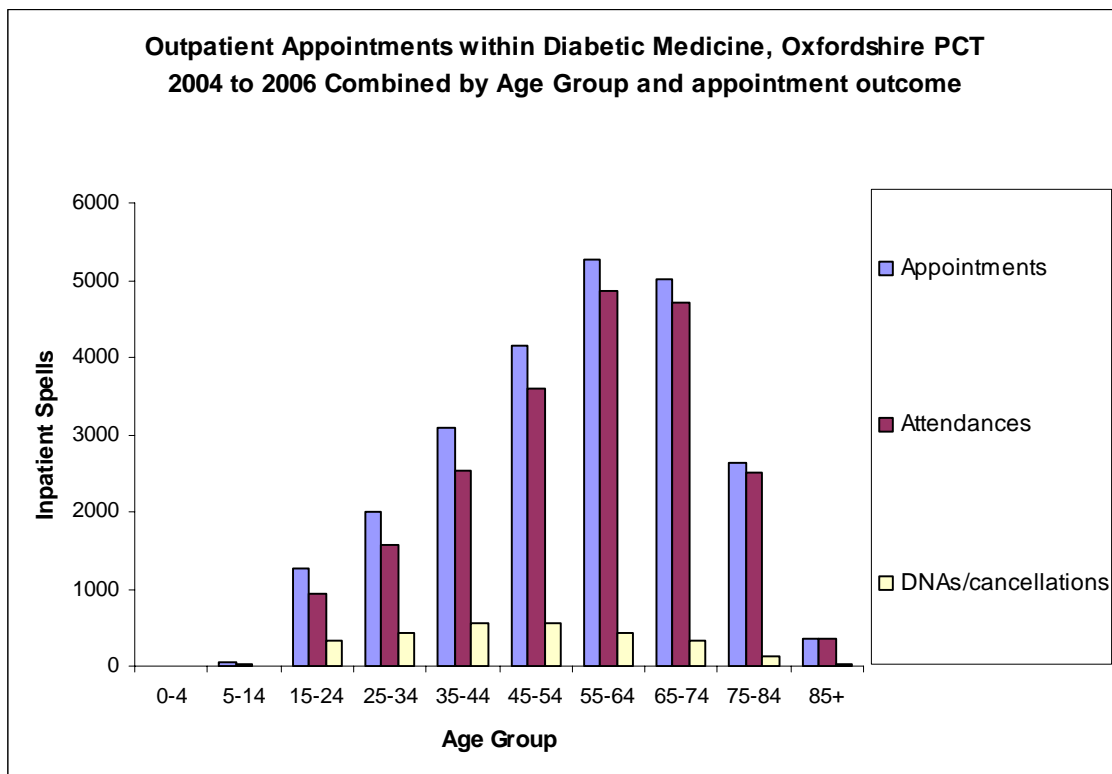
Source: Dr Foster



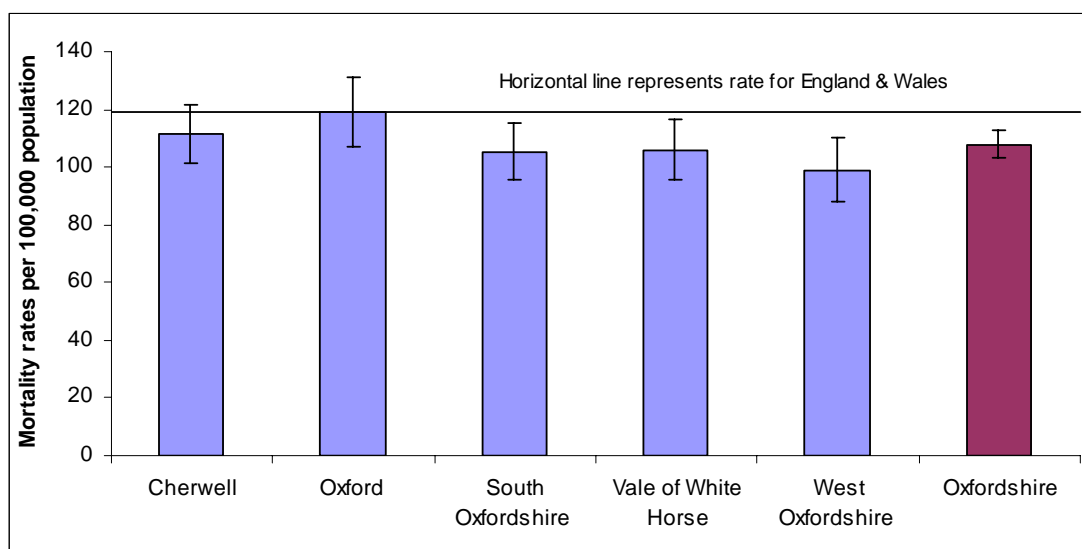
**Outpatient Appointments within Diabetic Medicine
Oxfordshire PCT
2004 to 2006 Combined
By Age Group and Appointment Outcome**

Age Group	Appointments	Attendances	DNAs/cancellations
0-4	3	3	0
5-14	40	31	9
15-24	1271	938	332
25-34	2005	1566	438
35-44	3099	2536	563
45-54	4151	3598	553
55-64	5275	4850	425
65-74	5024	4697	327
75-84	2638	2504	134
85+	363	348	15

Source: Dr Foster



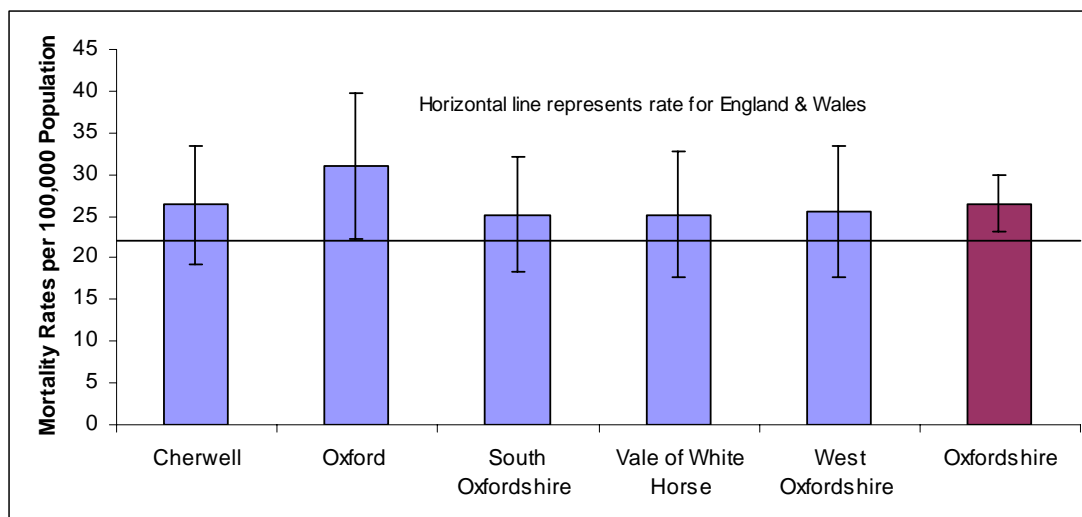
Mortality rates for all cancers (ICD10 C00-C97) in people under 75 years of age for Oxfordshire; 2003-05 pooled data



		Observed	Rate	RateLower Limit	RateUpper Limit
England & Wales	M	108724	132.99	132.2	133.79
	F	92184	106.94	106.25	107.64
	T	200908	119.29	118.77	119.82
Cherwell	M	232	118.53	103.27	133.78
	F	212	104.95	90.77	119.12
	T	444	111.54	101.14	121.93
Oxford	M	207	129.18	111.42	146.95
	F	174	108.65	92.4	124.91
	T	381	118.82	106.79	130.85
South Oxfordshire	M	248	119.16	104.32	134.01
	F	197	92.56	79.57	105.55
	T	445	105.38	95.57	115.2
Vale of White Horse	M	209	111.55	96.39	126.71
	F	191	100.98	86.5	115.45
	T	400	106.08	95.62	116.55
West Oxfordshire	M	161	102.09	86.31	117.87
	F	157	96.19	81.05	111.34
	T	318	99.03	88.11	109.96
Oxfordshire	M	1057	116.17	109.16	123.18
	F	931	99.95	93.5	106.4
	T	1988	107.8	103.05	112.55

Source: Compendium of Clinical Indicators

Mortality rates for breast cancer (ICD10 C50) in people under 75 years of age for Oxfordshire; 2003-05 pooled data



		Observed	Rate	Rate Lower Limit	Rate Upper Limit
England & Wales	F	18363	22.03	21.71	22.36
Cherwell	F	54	26.35	19.28	33.42
Oxford	F	49	31.04	22.27	39.81
South Oxfordshire	F	52	25.18	18.3	32.06
Vale of White Horse	F	45	25.21	17.75	32.66
West Oxfordshire	F	41	25.56	17.7	33.42
Oxfordshire	F	241	26.5	23.14	29.86

Source: Compendium of Clinical Indicators

5 Finding out more

The following sources of information will be useful if you want to find out more:

www.oxfordshireobservatory.info

www.communityhealthprofiles.info

www.drfooster.co.uk

www.sepho.org