



Oxfordshire's Sustainable Community Strategy -  
A long term vision for the county

## Briefing paper 9: Population

FINAL DRAFT

This paper is number 9 in a series of 12 briefing papers prepared to inform the development of the Oxfordshire Sustainable Community Strategy by the Oxfordshire Partnership.

The briefing papers are designed for any individual or organisation interested in finding out more about Oxfordshire. Specifically they have been developed for representatives of organisations in the Oxfordshire Partnership who will be attending workshops and discussions on the priorities for the strategy during 2007.

Final draft: 3 August 2007

CONTENTS

1	Summary .....	3
2	Population distribution .....	4
3	Past population trends.....	7
4	Future population growth.....	11
4.1	Long term trends.....	11
4.2	Small area trends.....	12
5	Migration.....	14
5.1	Natural change and migration.....	14
5.2	Recent migration.....	16
5.2.1	Worker Registration Scheme.....	16
5.2.2	National Insurance Number registrations .....	20
5.3	New Housing.....	22
6	Vulnerable groups and distinctive populations .....	24
6.1	Students .....	24
6.2	Armed forces/Military.....	25
6.3	Ethnicity .....	27
6.3.1	Census 2001 .....	27
6.3.2	Oxfordshire County Council ethnicity forecasts.....	29
6.4	Travellers.....	30
6.5	Communal establishments.....	31
7	Issues and options for the strategy.....	32
8	APPENDIX 1- Sources of Information .....	33
8.1	Source details .....	33
8.2	Additional extracts .....	36
9	APPENDIX 2- List of briefing papers .....	39

Paper prepared by: Peter Frobisher, Oxfordshire County Council

With the help of: Inga Doherty, Oxfordshire County Council

Margaret Melling, Independent Data Consultant

## I Summary

This paper summarises evidence about the county's population to inform the Sustainable Community Strategy.

Oxfordshire is predominantly a rural county: despite its recent increase in population, Oxfordshire remains the least densely populated county in the South East of England and West Oxfordshire is one of the region's least densely populated districts.

Oxford city is a densely populated, diverse, urban area: Oxford has far higher levels of migration, residents born outside the UK, and Black, Minority, Ethnic (BME) communities than Oxfordshire's rural districts.

Oxfordshire's population is aging, in line with national trends, in all districts except Oxford city.

Key trends with implications for the strategy are:

- Ageing population
  - Implications of changes in the age profile (particularly increases within the older age groups) of the population, especially for smaller rural communities.
- Migration
  - Economic migration from existing and new European countries.
  - Internal migration trends e.g. people moving from London to Oxfordshire.
  - Impact of international and internal migration on Oxfordshire's communities.

One of the challenges to date has been the lack of consistent and up-to-date information (particularly for migration). To address this, we need to continue to improve the accessibility of the latest population data and trends so that plans are informed by consistent evidence. To this end it is important to:

- Establish the Oxfordshire Data Observatory as the central source of population data and social statistics for the Oxfordshire Partnership;
- Set up an annual process of refreshing and reviewing population data to feed into service and strategic planning; and
- Research specific issues of relevance to the Oxfordshire Partnership - for example the impact of economic migration on population growth; changes in ethnic diversity.

The following sections address population distribution across the county, population trends (past and future), migration, the population aspects of new housing, and vulnerable and distinctive groups. Key issues and options for the Sustainable Community Strategy are summarised in Section 7. Further information on data sources is provided in Appendix I.

## 2 Population distribution

As of mid-2005, Oxfordshire was home to around 626,900 people and the least densely populated county in the South East region.

At a district level, West Oxfordshire had one of the lowest population densities in the South East – higher only than Chichester district. In contrast, Oxford City had the eighth highest population density in the South East; over twenty times that of West Oxfordshire.

**Table 1:** Population density of counties and districts in the South East (sorted by ascending order of density)

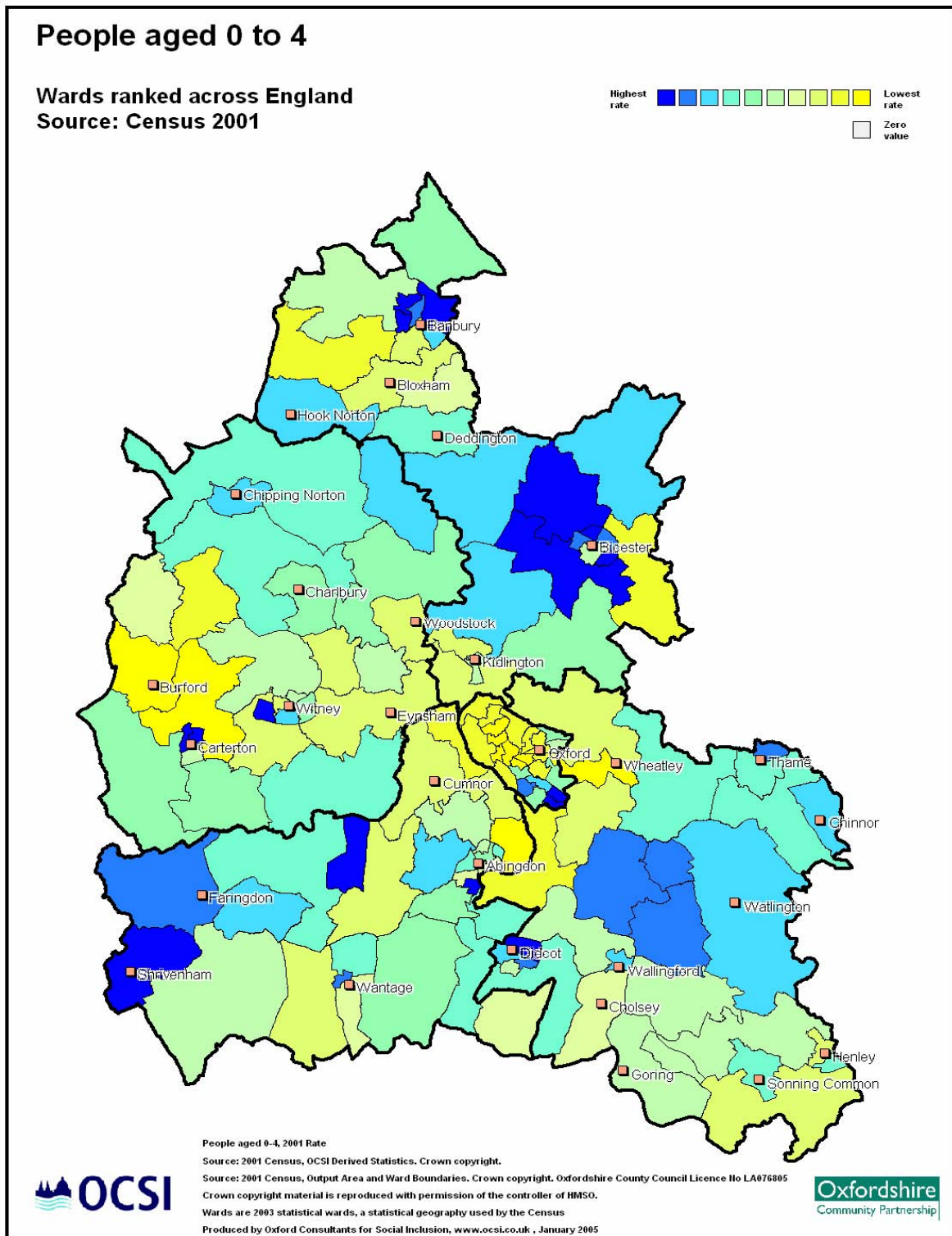
	2005 MYE Population: All people	Area (hectares)	2005 MYE population per hectare
<b>SOUTH EAST</b>	<b>8,164,200</b>	<b>1,940,739</b>	<b>4.20</b>
Oxfordshire	626,900	260,595	2.41
Buckinghamshire	418,500	156,494	2.67
East Sussex	497,900	172,517	2.88
Hampshire	1,259,500	373,822	3.37
Kent	1,369,900	363,943	3.76
West Sussex	764,400	202,540	3.77
Surrey	1,075,500	167,005	6.44
Chichester	109,300	81,363	1.34
West Oxfordshire	97,700	71,440	1.37
Rother	86,000	51,815	1.66
Wealden	141,000	83,626	1.69
Winchester	112,500	66,107	1.70
Test Valley	112,300	62,761	1.79
Aylesbury Vale	168,100	90,275	1.86
East Hampshire	111,300	51,444	1.89
South Oxfordshire	128,200	67,854	1.89
Vale of White Horse	117,000	57,864	2.02
West Berkshire UA	146,300	70,417	2.08
Cherwell	134,200	58,876	2.28
Oxford	149,800	4,561	32.84

Source: 2005 Mid-year estimates (MYE) and UK Standard Area Measurements, ONS, crown copyright reserved

According to census data and the more recent Oxfordshire County Council surveys of new housing, areas of new development tend to have higher proportions of children.

At the time of the Census 2001 survey, areas in and around Banbury, Bicester, Carterton and Didcot had particularly high proportions of people aged 0-4 years.

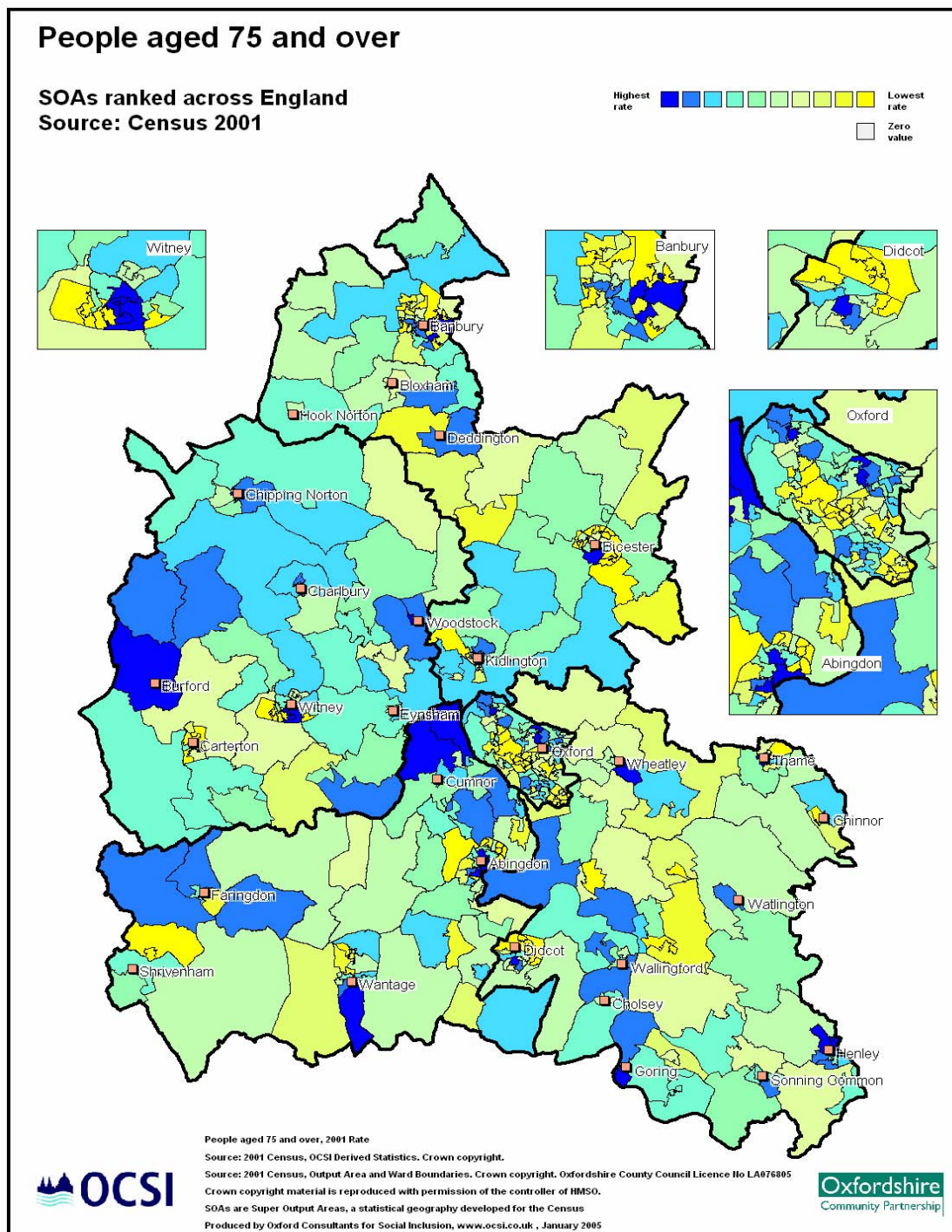
**Figure 2 Distribution of people aged between 0 and 4 in Oxfordshire, with ranking based on the distribution across England (2001)**



Rural areas of Oxfordshire tend to have higher proportions of older people.

- In 2001, areas of Burford, Witney, Wantage, Appleton and Cumnor, North Hinksey and Wytham, Henley and Wheatley had higher rates of residents aged over 75 years, a distribution which is influenced by locations of care homes for the elderly.

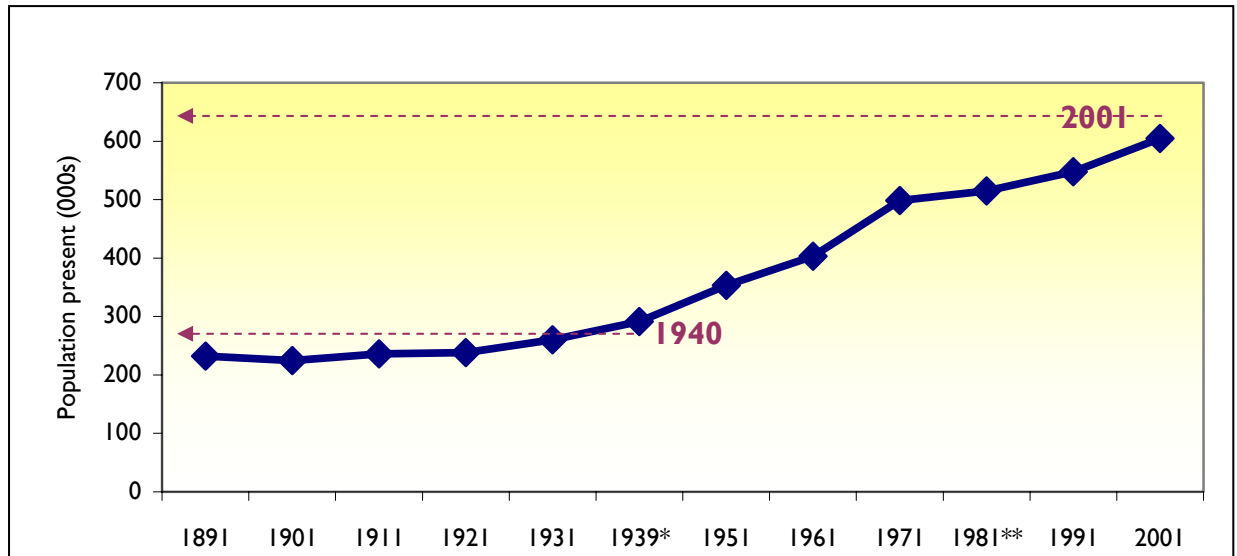
**Figure 3 The proportion of people in Oxfordshire aged over 75 years, with ranking based on the distribution across England (2001)**



### 3 Past population trends

The population of Oxfordshire has more than doubled since the 1940s.

**Figure 4:** The population change in Oxfordshire from 1891 to 2001

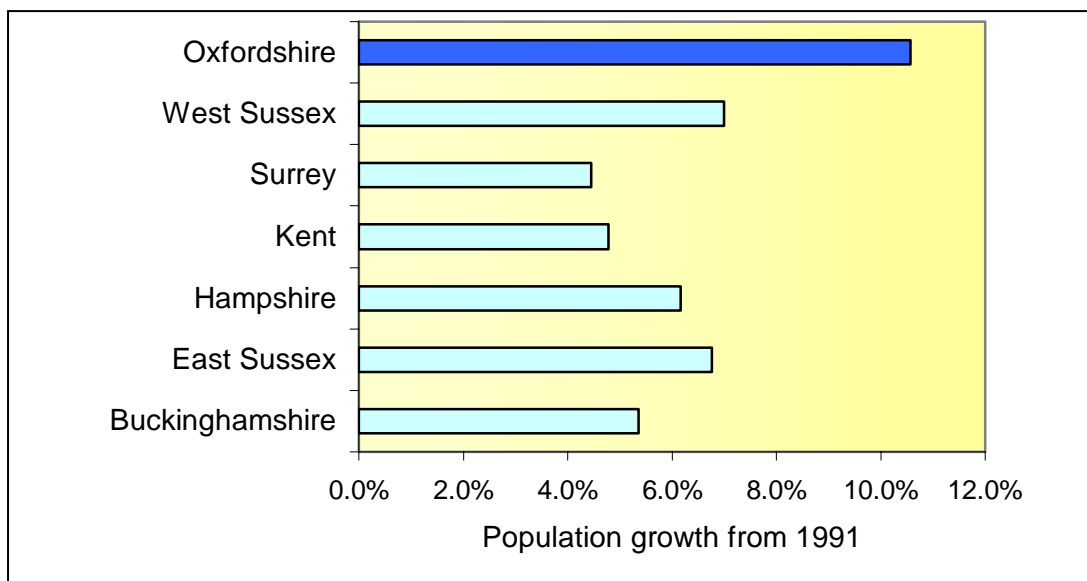


\* Mid year estimate      \*\*Preliminary count

Source: Various Census data.

In the ten years between the 1991 and 2001 census surveys, population growth in Oxfordshire (10.6%) was well above the average for the South East region (6.7%).

**Figure 5:** The population growth of Oxfordshire and other counties in the South East region between 1991 and 2001



Source: Census surveys, ONS, Crown copyright reserved

Between 1991 and 2001, all five districts in Oxfordshire recorded population growth rates above the national average.

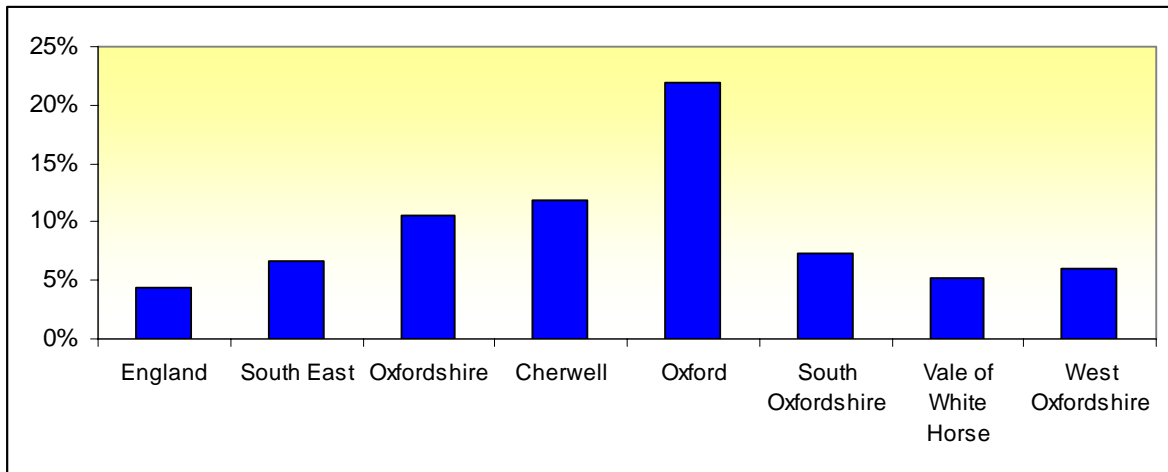
- Oxford City recorded the highest growth in Oxfordshire at 21.9%. Cherwell (11.8%) and South Oxfordshire (7.3%) also recorded population growths higher than the average for the South East.

**Table 3:** Population growth in Oxfordshire between 1991 and 2001

	1991	2001	1991 to 2001
England	47,055,205	49,138,831	4.4%
South East	7,497,730	8,000,645	6.7%
Oxfordshire	547,584	605,488	10.6%
Cherwell	117,832	131,785	11.8%
Oxford	110,103	134,248	21.9%
South Oxfordshire	119,476	128,188	7.3%
Vale of White Horse	109,922	115,627	5.2%
West Oxfordshire	90,251	95,640	6.0%

Source: Census surveys, ONS, Crown copyright reserved

**Figure 6:** Percentage population growth between 1991 and 2001



Source: Census surveys, ONS, Crown copyright reserved

The age profile of Oxfordshire's population has changed. There are now fewer young children and more older people living in the county.

**Table 4:** The change in Oxfordshire's age profile from 1991 to 2001

age	1991	2001	1991 to 2001	% change
0 to 4	37,029	35,828	-1,201	-3.2%
5 to 9	34,246	37,545	3,299	9.6%
10 to 14	32,512	37,701	5,189	16.0%
15 to 19	34,885	38,822	3,937	11.3%
20 to 24	43,601	43,620	19	0.0%
25 to 29	46,923	41,476	-5,447	-11.6%
30 to 44	122,107	142,029	19,922	16.3%
45 to 59	92,021	113,118	21,097	22.9%
60 to 64	25,528	27,449	1,921	7.5%
65 to 74	43,255	45,691	2,436	5.6%
75 to 84	27,776	30,932	3,156	11.4%
85 to 89	5,536	7,501	1,965	35.5%
90 & over	2,165	3,776	1,611	74.4%
<b>TOTAL</b>	<b>547,584</b>	<b>605,488</b>	<b>57,904</b>	<b>10.6%</b>

Source: Census surveys, ONS, Crown copyright reserved

The decline in 0 to 4 year olds has happened across every district except South Oxfordshire. Oxford has seen one of the greatest declines in 0 to 4 year olds with a reduction of over 500 children (-7%) between 1991 and 2001.

The growth in the number of people aged over 75 years has occurred across the county except in Oxford where numbers remained the same. The district of the Vale of White Horse saw the highest growth in absolute terms with the number of people aged over 75 years increasing by almost 1,800 (27%).

Between 2001 and 2005, the population of Oxfordshire is estimated to have increased by a further 3.2% (see table below).

Over the same period, the growth in Oxford City's population was 10.6%, well above the county rate and above other local authorities in the South East region.

**Table 5:** Mid-year population estimates

	2001	2002	2003	2004	2005	2001 to 2005 percent change
Oxfordshire	607,300	609,700	615,200	619,800	<b>626,900</b>	<b>3.2%</b>
Cherwell	132,000	131,800	132,800	133,500	<b>134,200</b>	<b>1.7%</b>
Oxford	135,500	139,000	142,400	145,100	<b>149,800</b>	<b>10.6%</b>
South Oxfordshire	128,300	128,000	127,800	127,900	<b>128,200</b>	<b>-0.1%</b>
Vale of White Horse	115,800	115,400	116,000	116,200	<b>117,000</b>	<b>1.0%</b>
West Oxfordshire	95,700	95,500	96,300	97,000	<b>97,700</b>	<b>2.1%</b>

Source: ONS Mid-year estimates, Crown Copyright reserved

## 4 Future population growth

### 4.1 Long term trends

According to the government's long term population forecasts, the population of Oxfordshire is expected to increase by 11.4% between 2006 and 2026. This is above the average for England (10.1%) and the South East (10.1%).

**Table 6:** 2004-based Sub-national population projections

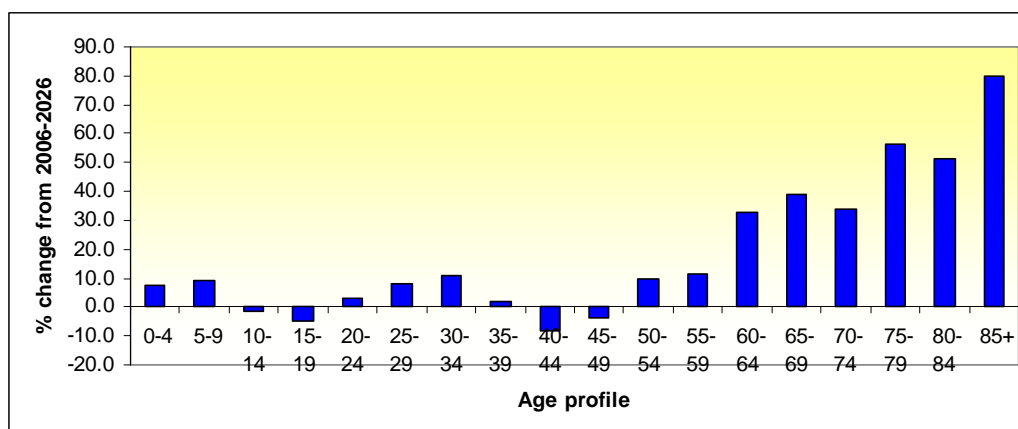
AREA NAME	2006	2016	2026	% change 2006-2026
England	50,714,000	53,276,000	55,823,500	10.1
South East	8,205,100	8,603,000	9,035,700	10.1
Oxfordshire	630,300	666,600	702,300	11.4
Cherwell	136,100	147,000	157,400	15.6
Oxford	150,100	165,400	176,100	17.3
South Oxfordshire	128,600	131,300	135,800	5.6
Vale of White Horse	117,300	120,900	126,000	7.4
West Oxfordshire	98,100	102,000	107,000	9.1

Source: 2004 Population projections, Office of National Statistics, Crown copyright reserved

Over the next 20 years the number of older people living in Oxfordshire is expected to increase significantly.

- Between 2006 and 2026, Oxfordshire's total population is forecast to grow by 11.4% with the population group aged 75 and over expected to grow by 61.2% over the same period. This trend is similar to that expected nationally and is driven by increasing life expectancy and the current age profile of the county.
- This growth would result in an additional 28,100 people aged over 75 in Oxfordshire by 2026.

**Figure 7:** Population change by age group in Oxfordshire, 2006-2026



Source: Population projections, ONS, Crown copyright reserved

## 4.2 Small area trends

According to Oxfordshire County Council small area (ward) forecasts, growth in urban areas of Oxfordshire is expected to be well above that in rural parts of the county.

- Between 2001 and 2016 the growth of the population in urban areas across Oxfordshire is predicted to be 10.8%. This compares to a 3.2% growth in the number of people living in rural areas.
- The greatest disparity between urban and rural population growth occurs in West Oxfordshire.
  - Urban areas in West Oxfordshire are forecast to grow by 27%, compared to a minor increase in the rural population of 0.8%.
- Overall, Oxfordshire is forecast to have an additional 47,500 people by 2016, 84% of whom will be living in urban areas.

**Table 7:** Rural/urban analysis of small area population forecasts (classification by wards)

District		2001	2016	Difference	% Change
Cherwell	Rural	44,779	47,505	2,727	6.1%
	Urban	87,209	90,900	3,691	4.2%
Oxford	Urban	135,509	149,158	13,649	10.1%
South Oxfordshire	Rural	83,133	83,441	307	0.4%
	Urban	45,174	50,639	5,466	12.1%
Vale of White Horse	Rural	51,445	55,589	4,145	8.1%
	Urban	64,327	71,552	7,225	11.2%
West Oxfordshire	Rural	59,073	59,543	470	0.8%
	Urban	36,628	46,500	9,872	27.0%
Sum of districts	<b>TOTAL</b>	<b>607,277</b>	<b>654,829</b>	<b>47,552</b>	<b>7.8%</b>
	Rural	238,430	246,079	7,649	3.2%
	Urban	368,847	408,750	39,903	10.8%

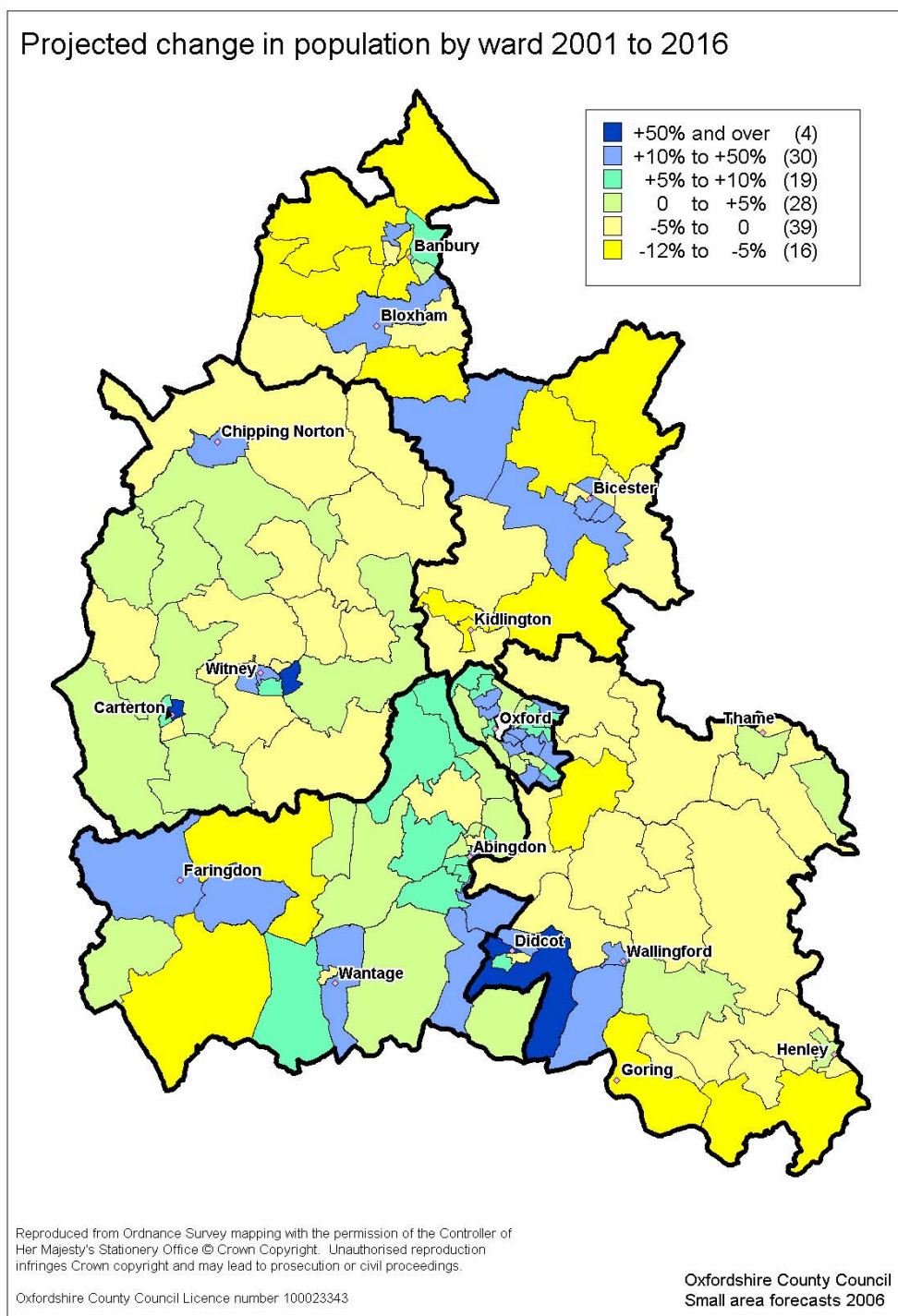
Source: Oxfordshire County Council small area forecasts, July 2007

Some figures may vary due to rounding

The following map shows the projected population change across Oxfordshire to 2016 at ward level.

- Population growth is expected in urban areas such as Oxford, Didcot, Carterton, Witney and Chipping Norton.
- Lower growth and some declines are expected in many rural parts of the county.

**Figure 8:** Projected population change by ward, 2001-2016



## 5 Migration

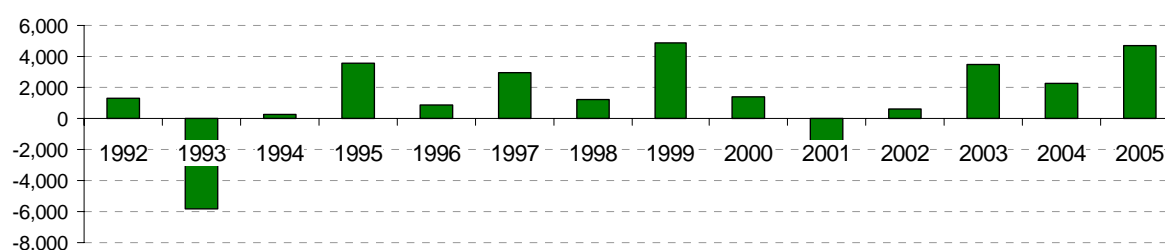
### 5.1 Natural change and migration

Over the past 16 years, natural change (births, deaths) of the population in Oxfordshire has stayed fairly constant, whereas net migration and other changes have fluctuated (see appendix for components of population change).

The following chart shows the annual net migration and other changes. Only two years record net migration out of Oxfordshire, in 1993 and 2001.

- Significant in-migration occurs in 1995, 1997 and 1999 and is also apparent more recently from 2003 to 2005.

**Figure 9:** Oxfordshire net migration and other changes



Source: Population estimates, Office of National Statistics, Components of population change

### Migration to and from London

The National Health register provides data for movement of people within the UK and for 2004/05 shows net positive migration from London to all four of Oxfordshire's rural districts. The flows with Oxford are likely to be dominated by student arrivals and graduating student departures.

**Table 8:** People moving between Oxfordshire and London 2004/05

	From London	To London	Net
Cherwell	660	390	270
Oxford	2,490	3,370	-880
South Oxfordshire	920	530	390
Vale of White Horse	590	440	150
West Oxfordshire	480	260	220

Source: National Health Service Central Register/Patient Register Data

### International out-migration

The International passenger survey is used by the Office of National Statistics to estimate changes in population between census surveys. It should be noted that it uses a very small sample (2,800 immigrants and 800 emigrants nationally in 2004).

The international passenger survey data for Oxfordshire districts shows a net outflow for Cherwell and West Oxfordshire for 2004/05, and high inflow to Oxford.

**Table 9:** International passenger survey data for 2004/05

	<b>In</b>	<b>Out</b>	<b>Net</b>
Cherwell	786	1,033	-247
Oxford	5,072	1,123	3,949
South Oxfordshire	1,016	990	26
Vale of White Horse	1,246	899	347
West Oxfordshire	505	751	-246

Source: Office of National Statistics Mid year estimate change analysis 2004-05

## 5.2 Recent migration

### 5.2.1 Worker Registration Scheme

A number of caveats in this data mean that the figures presented below can only give a tentative guide to the number of people from Accession 8 (A8) countries working in an area. However they do give an indication of the relative size of migrant populations. Note that the Worker Registration Scheme (WRS) statistics use the employer's postcode address to allocate individuals to local authority areas.

A total of 7,645 people from countries that joined the European Union in 2004 ("A8 nationals") registered for work in Oxfordshire between May 2004 and March 2007 (10% of the total for the South East region).

- 29% of total Oxfordshire registrations were in South Oxfordshire, with 27% in Oxford City.

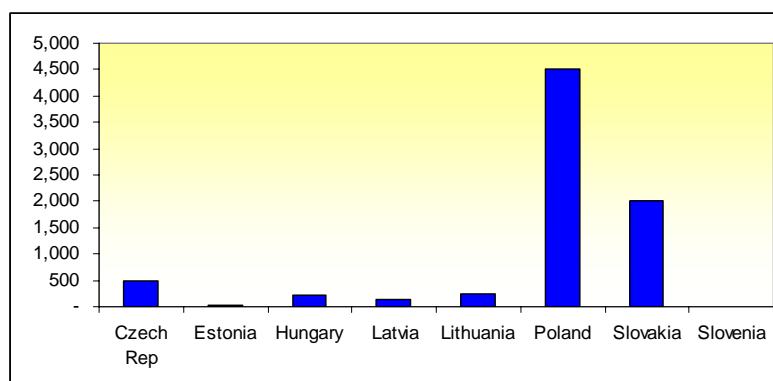
**Table 10:** Worker registrations between May 2004 and March 2007

Local Authority	May 04 - Mar 07								
	Czech Rep	Estonia	Hungary	Latvia	Lithuania	Poland	Slovakia	Slovenia	Total
England, Wales, NI	26,540	5,710	17,280	30,615	58,300	367,040	56,595	515	562,595
South East	4,200	835	2,280	4,100	6,750	48,960	9,380	75	76,580
Oxfordshire	500	25	225	130	245	4,505	2,010	5	7,645
Cherwell	70	15	25	45	20	1,130	115	0	1,420
Oxford	170	10	65	35	130	1,420	260	5	2,095
South Oxfordshire	170	0	65	25	50	570	1,360	0	2,240
Vale of White Horse	35	0	15	5	25	375	85	0	540
West Oxfordshire	55	0	55	15	20	1,010	190	0	1,345

Source: Worker Registration Scheme, The Home Office (LGAR extract)

Polish nationals accounted for 59% of all Worker Registration Scheme applications in Oxfordshire between May 2004 and March 2007 and are mainly distributed across Cherwell, Oxford City and West Oxfordshire.

Registrations from Slovak nationals accounted for 26% of the total and are concentrated in South Oxfordshire.

**Figure 10: Worker registrations in Oxfordshire, May 2004 to March 2007**

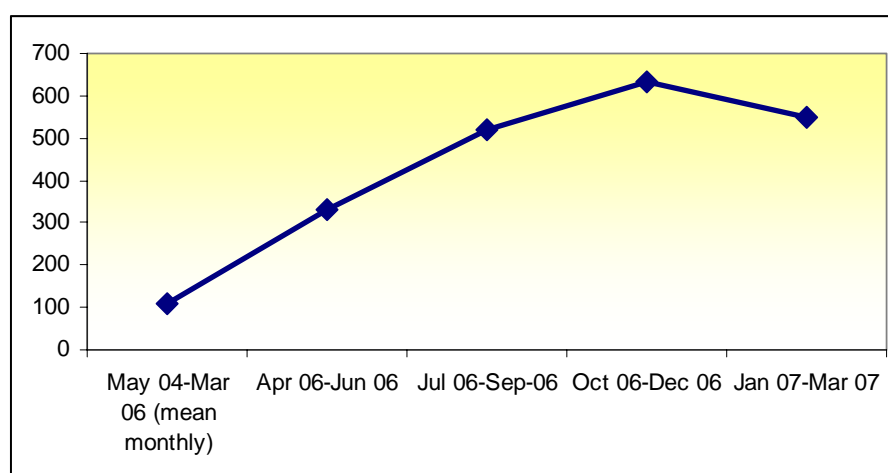
Source: Worker Registration Scheme, The Home Office (LGAR extract)

**Table 11: WRS applications in Oxfordshire, May 2004 to March 2007**

Nationality	Oxfordshire				
	May 04- Mar 06 (mean monthly)	Apr 06- Jun 06	Jul 06- Sep-06	Oct 06- Dec 06	Jan 07- Mar 07
Czech Rep	15	60	35	35	25
Estonia	0	0	0	0	5
Hungary	5	5	20	20	20
Latvia	5	10	5	15	5
Lithuania	10	20	15	25	5
Poland	107	330	520	635	550
Slovakia	54	230	265	190	90
Slovenia	0	0	0	0	0

Source: Worker Registration Scheme, The Home Office (LGAR extract)

The following chart suggests that there has been an increase in the number of Polish nationals applying for work across Oxfordshire, although a decline was recorded in the last quarter.

**Figure 11:** Polish applications in Oxfordshire, May 2004 to March 2007

Source: Worker Registration Scheme, The Home Office (LGAR extract)

### Age ranges

At national and local level the majority of workers from Accession 8 countries applying for the scheme are aged between 18 and 34 years.

- In Oxfordshire, 86% of registrations were from people aged between 18 and 34 years, compared to 85% in the South East and 82% in England, Wales and Northern Ireland.

**Table 12:** Number of registrations by age profile, May 2004-March 2007

Authority	May 2004 - March 2007							Total
	<18	18-24	25-34	35-44	45-54	55-64	65+	
England, Wales, NI	1,705	244,255	218,900	58,625	34,430	4,595	45	562,610
South East	220	34,765	30,010	6,995	4,000	555	10	76,570
Oxfordshire	5	3,400	3,205	670	320	25	0	7,655
Cherwell	0	655	595	105	60	10	0	1,415
Oxford	5	965	870	170	90	10	0	2,095
South Oxfordshire	0	1,030	935	200	70	10	0	2,240
Vale of White Horse	0	210	255	50	25	5	0	545
West Oxfordshire	0	540	550	145	115	10	0	1,360

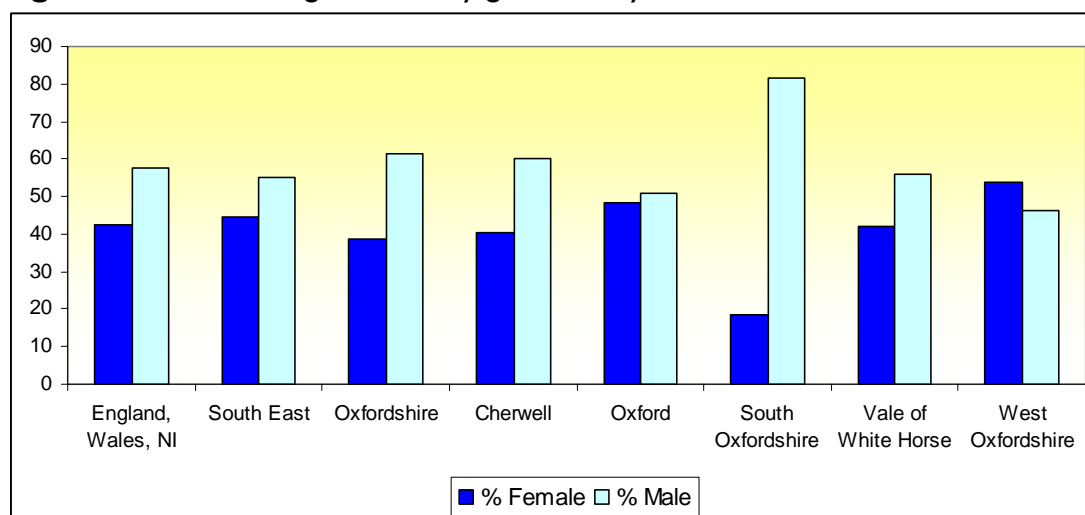
Source: Worker Registration Scheme, The Home Office (LGAR extract)

### Worker registrations by Gender

The majority of registrations to the WRS are from male applicants, with South Oxfordshire recording the greatest disparity.

- Approximately 58% of registrations nationally are from male applicants with 42% from female applicants.
- Oxfordshire has a slightly higher rate of male applicants at 61%, compared to an average of 55% in the South East.
- The percentage of male and female registrations in Oxfordshire is affected by significant variations at district level. South Oxfordshire has a considerably higher rate of male registrations for work at 82%. While West Oxfordshire is the only district to record a higher rate of female registrations at 54%.

**Figure 12: Worker registrations by gender, May 2004 to March 2007**



Source: Worker Registration Scheme, The Home Office (LGAR extract)

### Dependents of Worker registrations

A total of 555 people were registered as dependents in the Worker Registration scheme from May 2004 and March 2007 in Oxfordshire.

**Table 13: Number of registered dependents, May 2004 to March 2007**

Authority	May 04 - Mar 07		
	Dependents Under 17	Dependents Over 17	Total
England, Wales, NI	32,315	27,410	59,715
South East	4,005	3,715	7,720
Oxfordshire	245	290	555
Cherwell	65	80	145
Oxford	95	120	215
South Oxfordshire	25	40	70
Vale of White Horse	45	25	75
West Oxfordshire	20	30	50

Source: Worker Registration Scheme, The Home Office (LGAR extract)

## 5.2.2 National Insurance Number registrations

The number of non-UK nationals registering for National Insurance numbers across Oxfordshire has increased since 2002.

- The amount of people registering for a National Insurance number (NINo) has risen by 135.7% in Oxfordshire between 2002/03 and 2005/06.
- Of the districts, Oxford City recorded the highest number of NINo registrations per annum, with almost 2,500 more registrations in 2005/06 than the previous year. West Oxfordshire registered the highest rate of increase (230.4%) from 2003/03 to 2005/06.

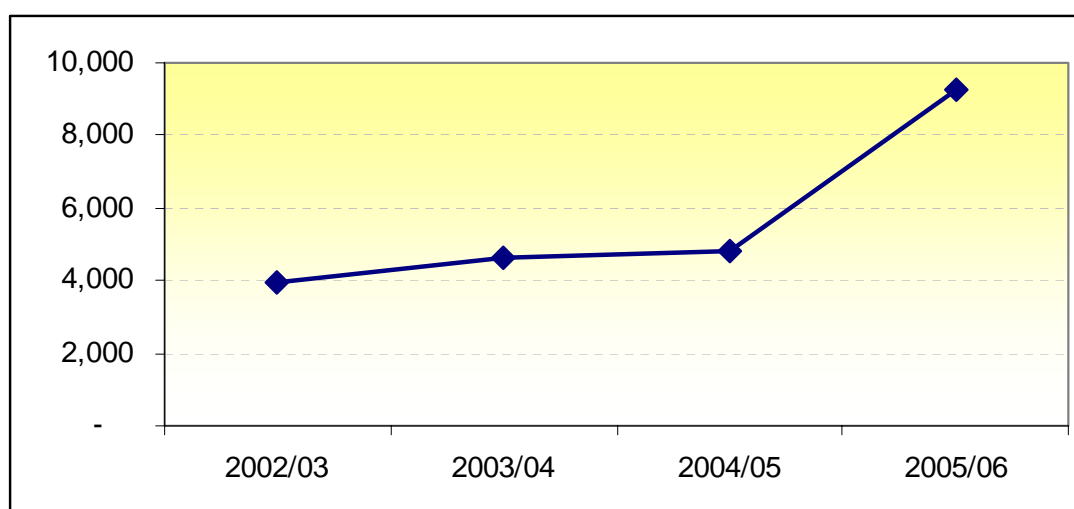
**Table 14:** National Insurance Number registrations in respect of non-UK Nationals from 2002 to 2006 by Local Authority

	2002/03	2003/04	2004/05	2005/06	% change (02/03 - 05/06)
Oxfordshire	3920	4620	4820	9240	135.7
Cherwell	550	660	700	1,440	161.8
Oxford City	2,270	2,720	2,610	5,100	124.7
South Oxfordshire	440	470	560	1,090	147.7
Vale of White Horse	430	480	500	850	97.7
West Oxfordshire	230	290	450	760	230.4

Source: NINo registrations based on data from National Insurance Recording System (Numbers are rounded to the nearest ten and may not sum)

The most significant rise in Oxfordshire (91.7%) occurred most recently between 2004/05 and 2005/06, where the number of registrations almost doubled.

**Figure 13:** National Insurance Number registrations across Oxfordshire



Source: NINo registrations based on data from National Insurance Recording System

The countries of origin, in table 15, account for the highest number of National Insurance registrations in Oxfordshire.

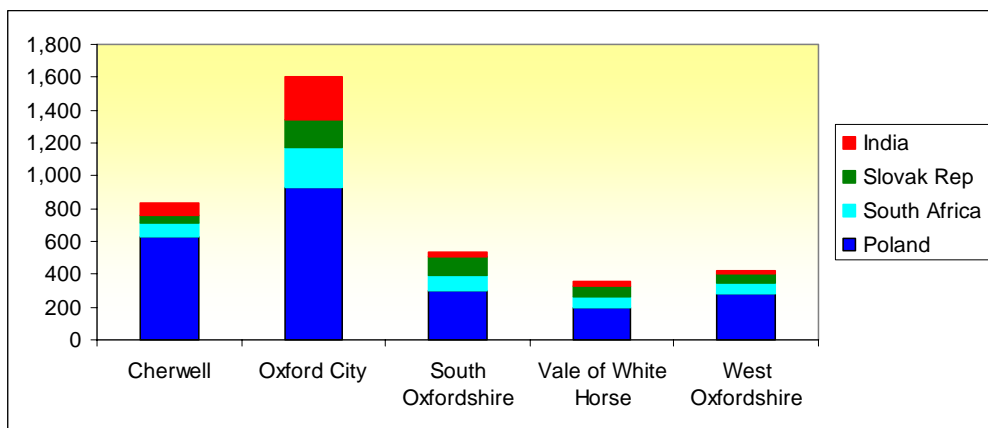
- Polish nationals form the largest group of non-UK nationals registering for a National Insurance number, accounting for 2,340 of the total registrations in Oxfordshire (25.3%).
- Of all non-UK nationals registering for a NINo in Cherwell, 43.8% have Poland as their country of origin.

**Table 15:** National Insurance Number Registrations in respect of non-UK Nationals in 2005/06 by Local Authority and selected countries of origin

	Poland	South Africa	Slovak Rep	India	Australia	France	USA
Oxfordshire	2,340	540	460	400	330	330	320
Cherwell	630	80	50	70	30	40	30
Oxford City	930	240	170	260	190	200	230
South Oxfordshire	300	90	120	20	30	50	20
Vale of White Horse	200	60	70	30	50	30	20
West Oxfordshire	280	70	50	20	30	10	20

Source: NINo registrations based on data from National Insurance Recording System (Numbers are rounded to the nearest ten and may not sum)

**Figure 14:** National Insurance Number Registrations in respect of non-UK Nationals in 2005/06 by Local Authority and country of origin



Source: NINo registrations based on data from National Insurance Recording System

### 5.3 New Housing

According to the survey of new housing carried out by Oxfordshire County Council in 2005, 66.5% of occupants in new housing moved from a previous address within Oxfordshire – higher than in previous surveys.

- Of the moves within Oxfordshire, over 75% occurred 'intra-district', that is, moves within the same district.

**Table 16:** Households in new housing moving from a previous address in Oxfordshire

	Current district of residence					
	Cherwell	Oxford	South Oxfordshire	Vale of White Horse	West Oxfordshire	Total
District of previous residence						
Cherwell	<b>610</b>	33	7	13	106	<b>769</b>
Oxford	87	<b>610</b>	52	94	70	<b>913</b>
South Oxfordshire	16	65	<b>426</b>	53	28	<b>588</b>
Vale of White Horse	22	53	19	<b>375</b>	60	<b>529</b>
West Oxfordshire	34	21	5	20	<b>670</b>	<b>750</b>
<b>Total</b>	<b>769</b>	<b>782</b>	<b>509</b>	<b>555</b>	<b>934</b>	<b>3,549</b>

Source: Survey of people in new housing in Oxfordshire, 2005

The same survey of people in new housing showed that over 90% of moves were from a previous address within England; 76% of moves were from within the South East region, with a further 10% from the East, London and South West (see following table).

**Table 17:** Previous address by region (Base= households with residents and occupied since 2000)

Area of previous residence	Number of households	Percentage of total
Oxfordshire	3,549	66.5%
London	218	4.1%
South East	4,065	76.1%
England	4,991	93.5%
Other UK	68	1.3%
Europe	76	1.4%
Other International	114	2.1%
Not Stated/unable to categorise	90	1.7%
<b>Total</b>	<b>5,339</b>	

Source: Survey of people in new housing in Oxfordshire, 2005

Less than 4% of moves into new dwellings were from international addresses, with the majority of international households coming from the USA (48 households). The next highest were France, Germany, Australia and Japan with over 10 new households each. 17 new households stated the previous address as 'abroad'.

- Nearly half of all international moves into new housing in Oxfordshire (93) were in Oxford City.

## 6 Vulnerable groups and distinctive populations

### 6.1 Students

At the time of the 2001 Census, 24% of Oxford city's population were students.

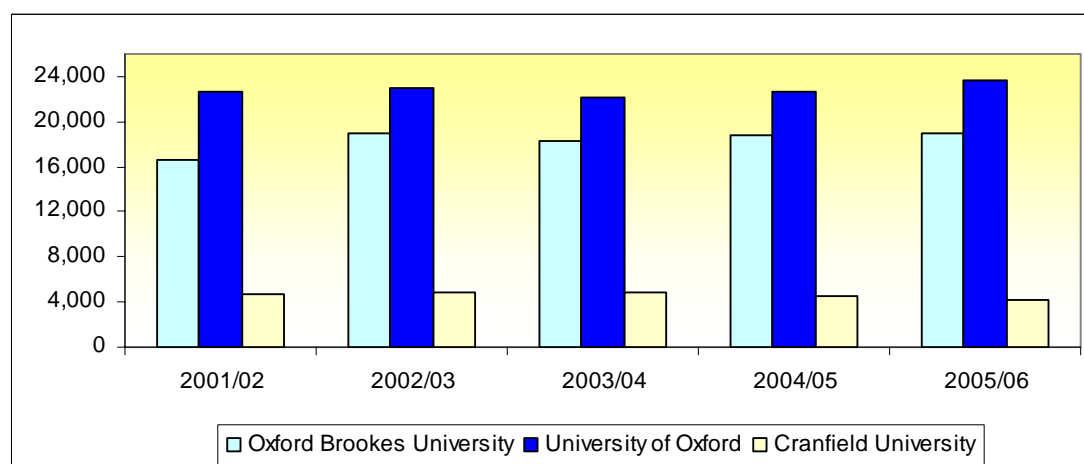
Overall the number of students attending the three Universities in Oxfordshire has increased since 2001.

**Table 18:** All students by institution

	2001/02	2002/03	2003/04	2004/05	2005/06
Cranfield University	4,725	4,790	4,825	4,600	4,160
Oxford Brookes University	16,530	18,880	18,345	18,845	18,950
University of Oxford	22,695	23,020	22,180	22,640	23,620

Source: Higher Education Statistics Agency (figures rounded to nearest multiple of 5)

**Figure 15:** Total number of students by institution



Source: Higher Education Statistics Agency (figures rounded to nearest multiple of 5)

Numbers of students from EU countries other than the UK has also increased over the past four years. Similarly more people from non-EU countries are coming to Oxfordshire to study.

**Table 19:** All students by institution and domicile

	Cranfield University			Oxford Brookes University			University of Oxford		
	UK	Other EU	Non-EU	UK	Other EU	Non-EU	UK	Other EU	Non-EU
<b>2002/03</b>	3,220	850	720	15,305	915	2,260	18,045	1,450	3,825
<b>2003/04</b>	3,195	840	790	14,645	895	2,395	17,125	1,450	3,600
<b>2004/05</b>	2,835	945	815	15,285	945	2,340	17,235	1,625	3,775
<b>2005/06</b>	2,370	965	825	15,415	945	2,365	17,555	1,770	4,300

Source: Higher Education Statistics Agency (figures rounded to nearest multiple of 5)

## 6.2 Armed forces/Military

The distribution of UK Regular Forces personnel across Oxfordshire has remained relatively constant since 2004. On a national level there is a strong decreasing trend.

- Of all the counties in the South East, 27.5% of Regular Forces are based in Oxfordshire.
- Oxfordshire also has the highest proportion of Regular Forces as a percentage of the total population, in the South East.
- Larger numbers of UK Regular Forces are posted in South Oxfordshire, Vale of White Horse and West Oxfordshire. Far fewer service personnel are based in Oxford City (See figure 16).

Oxfordshire's nearest statistical neighbours on population size have a much lower proportion of armed forces based in their county.

- Regular forces posted in Oxfordshire constitute 1.4% of the population (using ONS 2005 MYE), compared to 0.3% in Gloucestershire and 0.5% in Buckinghamshire and Cambridgeshire.

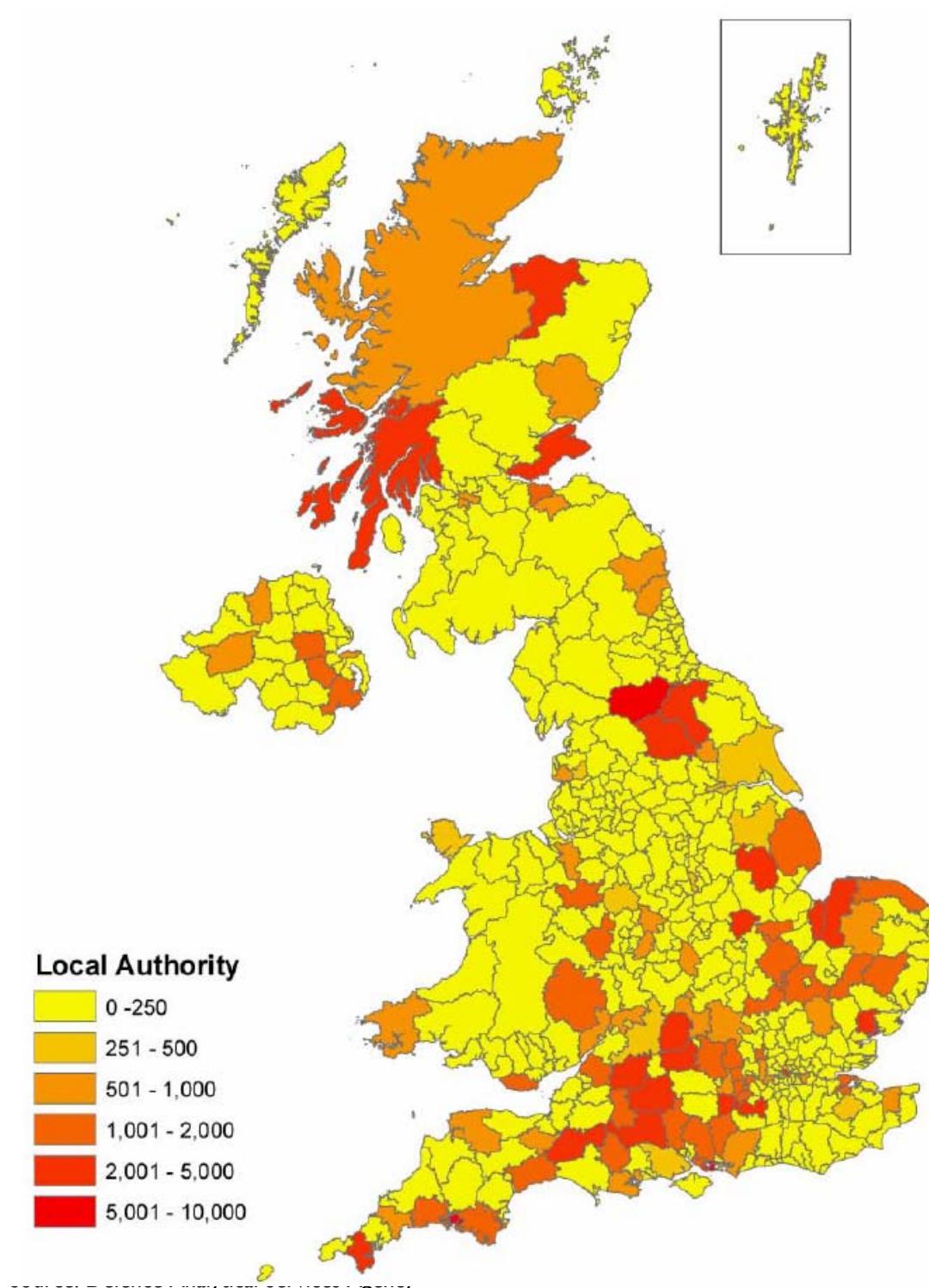
**Table 20:** UK Regular Forces posted in the South East, by local authority

	Jul-04	Apr-05	Jul-05	Oct-05	Jan-06	Apr-06
England	149390	147040	144980	145060	142790	142130
South East	49110	47510	46840	46640	46140	44770
Buckinghamshire	3110	2790	2690	2550	2540	2490
East Sussex	0	0	0	0	0	0
Hampshire	15860	15120	14820	14750	14710	14360
Kent	2100	1870	1880	2040	2030	1360
Surrey	3870	3780	3760	3960	4030	4160
West Sussex	950	840	770	760	740	680
Oxfordshire	8730	8870	8880	8900	8960	8750
Cherwell	770	750	850	860	850	840
Oxford	20	20	20	20	20	20
South Oxfordshire	1670	1710	1750	1730	1740	1680
Vale of White Horse	2730	2770	2610	2680	2770	2650
West Oxfordshire	3540	3620	3650	3610	3580	3560

Source: Defence Analytical Services Agency

The following map illustrates the distribution of UK Regular Forces personnel in the UK. Oxfordshire stands out quite clearly as being a strong post within the UK in terms of the distribution of Regular forces.

**Figure 16:** Strength of UK Regular Forces posted in the UK by Local and Unitary Authority, April 2006



## 6.3 Ethnicity

### 6.3.1 Census 2001

According to the 2001 Census survey, the proportion of people from non-white ethnic groups living in Oxfordshire has grown, from 3.3% of the total population in 1991 to 4.8% in 2001.

- Despite this growth, the proportion of non-white people in Oxfordshire as a whole is still considerably below the national average of 9.1% but broadly equal with the rest of the South East (4.9%).
- Oxford City has the second highest proportion of people born outside the UK in the South East. At the time of the 2001 Census survey, Oxford had the second highest proportion of ethnic Chinese people in England outside London (1.8% of the total population of Oxford).

**Table 21:** Change in the proportion of the population in Oxfordshire and districts that are of non-white ethnic origin between 1991 and 2001

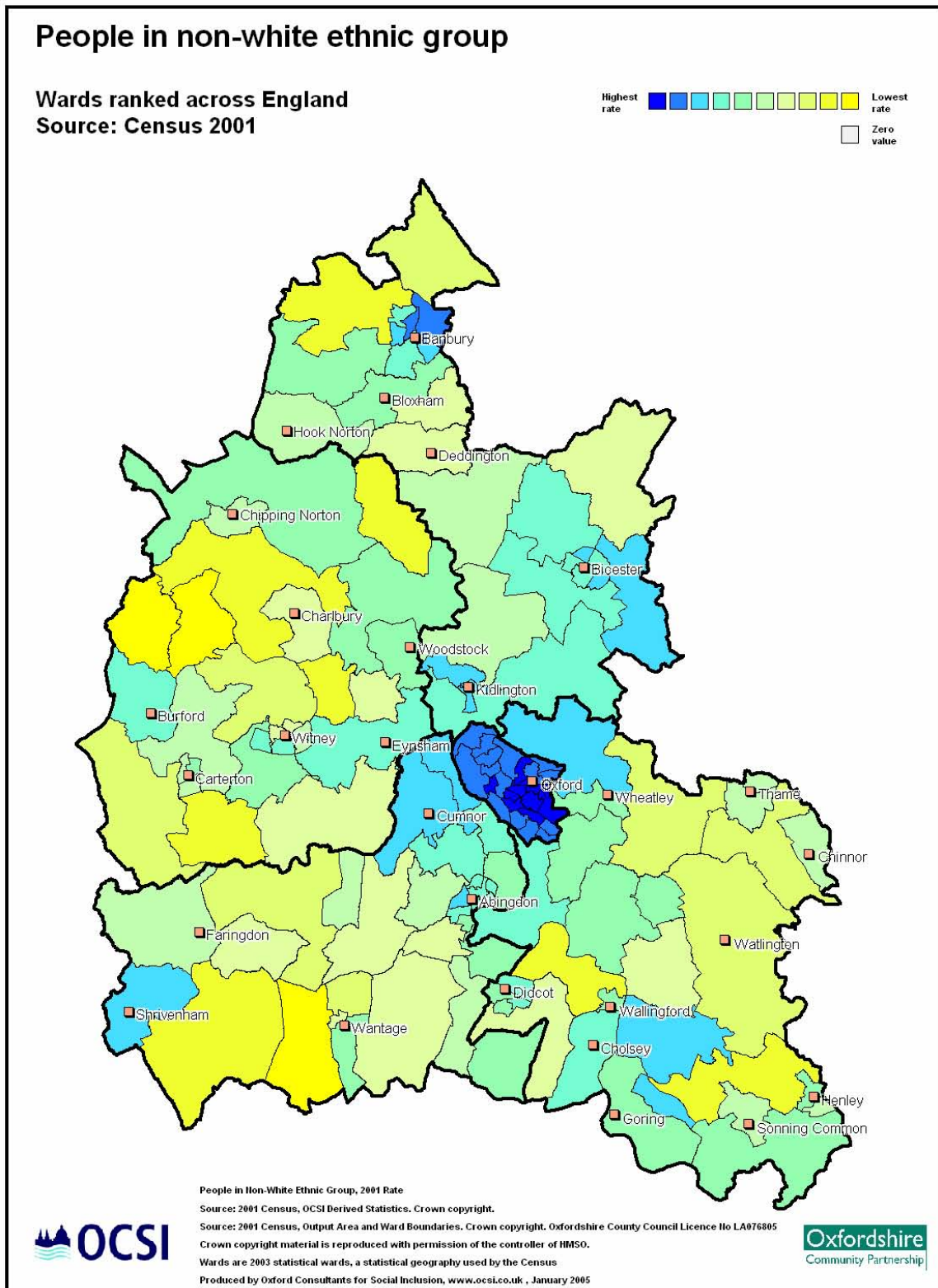
	1991	2001
England	6.2%	9.1%
South East	N/A	4.9%
Oxfordshire	3.3%	4.8%
Cherwell	3.6%	3.9%
Oxford	9.2%	12.9%
South Oxfordshire	1.1%	2.1%
Vale of White Horse	1.4%	2.4%
West Oxfordshire	1.0%	1.6%

Source: Census surveys, Office of National Statistics, Crown copyright reserved

In 2001, the proportion of people in the other white ethnic group in Oxfordshire was 4%. At national level the single largest countries of birth of other whites are the UK (20%) and the USA (7%), followed by Italy (6%), Germany (6%) and France (5%). The main Eastern European countries of birth were Turkey (3%) and Poland (3%).

- The highest proportions of non-white ethnic groups are in Oxford City and other urban areas such as Banbury, as indicated in the following map.

**Figure 17:** Distribution of non-white ethnic groups across Oxfordshire



### 6.3.2 Oxfordshire County Council ethnicity forecasts

According to experimental forecasts produced by Oxfordshire County Council, the ethnic breakdown of Oxfordshire's population is expected to change.

- The greatest increases are forecast in Mixed (43%) and Chinese (35%) ethnic groups over the ten year period.
- The Caribbean Black ethnic group is expected to decline by around 3% between 2001 and 2011.

**Table 22:** Oxfordshire experimental forecast of ethnicity

Ethnic Group	Total People			% change 2001-2011
	2001	2006	2011	
British White	545,731	550,565	563,277	3.2
Other White	31,750	33,585	35,448	11.6
Mixed	7,205	8,591	10,273	42.6
Caribbean Black	2,480	2,447	2,398	-3.3
Other Black	2,604	2,882	3,133	20.3
Indian	4,104	4,314	4,520	10.1
Pakistani	4,034	4,163	4,329	7.3
Other Asian	2,422	2,552	2,683	10.8
Chinese	3,906	4,644	5,275	35.0
Other	3,044	3,426	3,765	23.7
<b>Total</b>	<b>607,280</b>	<b>617,168</b>	<b>635,100</b>	<b>4.6</b>

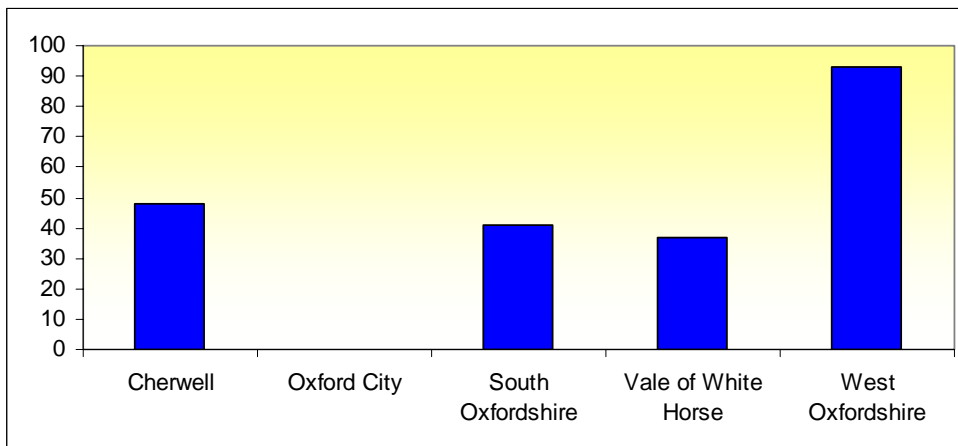
Source: Experimental statistics, Oxfordshire County Council Nov 2006. Some figures may vary due to rounding.

Oxford City shows a similar pattern of change in specific ethnic groups to Oxfordshire. The Mixed ethnic group is forecast to increase by 48% between 2001 and 2011 in Oxford city, with the number of ethnic Chinese people expected to increase by around 45% (see table in appendix 1).

## 6.4 Travellers

There are 16 permanent sites across Oxfordshire with a total of 219 plots. 93 of the permanent sites are in West Oxfordshire (42.5%).

**Figure 18:** Permanent Oxfordshire Traveller Sites by number of plots

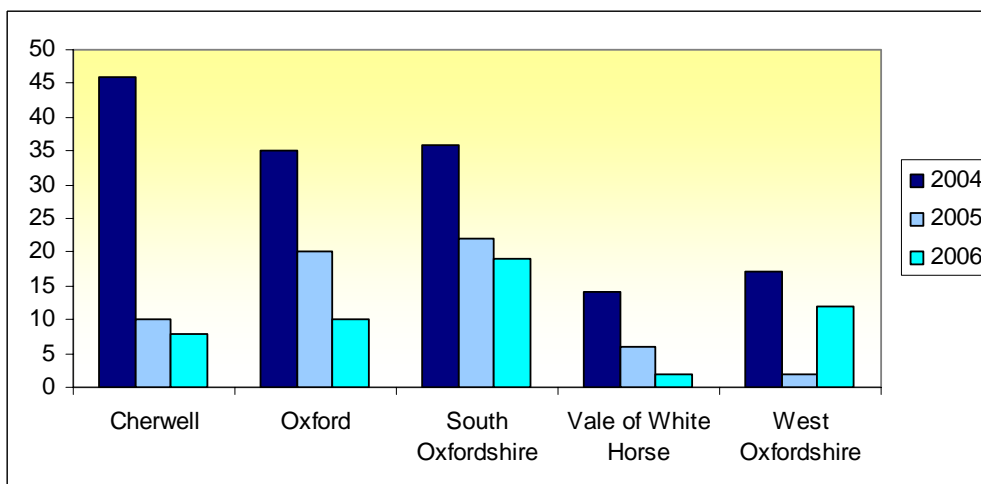


Private and Oxfordshire County Council managed, plus un-permitted developments  
 Source: Oxfordshire Gypsy and Traveller Services

In 2006 there were 51 unauthorised encampments in Oxfordshire, down from 148 in 2004.

- There is a strong decreasing trend across four districts, with West Oxfordshire registering the only increase (between 2005 and 2006).

**Figure 19:** Number of unauthorised gypsy and traveller encampments in Oxfordshire, 2004-2006



Source: Oxfordshire Gypsy and Traveller Services

## 6.5 Communal establishments

According to the 2001 Census, Oxfordshire has 23,066 residents in communal establishments, 87.5% of which were in urban areas.

- A communal establishment provides managed residential accommodation. Table 23 provides data on the number of communal establishment residents at the time of the 2001 Census.

At district level, Oxford City has the highest number of residents in communal establishments.

- Oxford City (99.6%) and the Vale (96.5%) have the highest rates of residents in communal establishments, in urban areas.
- South Oxfordshire (51.4%) has the lowest number of communal establishment residents in urban areas.

**Table 23:** Communal establishment residents, 2001

	Number of residents	% of residents in rural/urban areas
ENGLAND	818,466	-
Remainder	122,649	14.99
Urban areas	695,817	81.01
Oxfordshire	23,066	-
Remainder	2,876	12.47
Urban areas	20,188	87.52
Cherwell	2,241	-
Remainder	902	40.25
Urban areas	1,339	59.75
Oxford	13,590	-
Remainder	59	0.43
Urban areas	13,531	99.57
South Oxfordshire	2,406	-
Remainder	1,171	48.67
Urban areas	1,236	51.37
Vale of White Horse	3,006	-
Remainder	106	3.53
Urban areas	2,900	96.47
West Oxfordshire	1,823	-
Remainder	641	35.16
Urban areas	1,182	64.84

Source: ONS, Crown copyright reserved

## 7 Issues and options for the strategy

### Issues

- Ageing population
  - Implications of changes in the age profile (particularly increases within the older age groups) of the population, especially for smaller rural communities.
- Migration
  - Economic migration from existing and new European countries.
  - Internal migration trends e.g. people moving from London to Oxfordshire.
  - Impact of international and internal migration on Oxfordshire's communities.

### Options

- **Continue to improve the accessibility of the latest population data and trends so that plans are informed by consistent evidence.**  
Promote the Oxfordshire Data Observatory as the central source of population data and social statistics.
- Set up an **annual process of refreshing and reviewing** population data to feed into service and strategic planning.
- **Research specific issues** of relevance to the Oxfordshire Partnership - for example the impact of economic migration on population growth; changes in ethnic diversity.

## 8 APPENDIX I- Sources of Information

### 8.1 Source details

#### **Census surveys:** [Office for National Statistics](#)

Since 1801, every 10 years the nation has set aside one day for the Census - a count of all people and households. It is the most complete source of information about the population that we have. The latest Census was held on Sunday 29 April 2001.

The Census is the only survey which provides a detailed picture of the entire population, and is unique because it covers everyone at the same time and asks the same core questions everywhere, making it easy to compare different parts of the country.

The information the Census provides allows organisations to target their resources more effectively.

#### **Mid-year Estimates:** [Office for National Statistics](#)

Annual estimates of the resident population as at 30 June each year are made by the Office for National Statistics. The population estimates provide an indication of how many people live in the UK as a whole and in each local area by age and sex.

The latest population estimates are for mid-2005: mid-2006 population estimates due for release on 22 August 2007 on the [ONS website](#).

#### **Small Area Forecasts:** [Oxfordshire County Council](#)

Oxfordshire population and household forecasts from 2001 to 2016 published by Oxfordshire County Council in July 2007. The primary purpose of these forecasts is to give an indication of the population and household growth at electoral ward (District) level - based on planned changes in housing stock. The detailed modelling work has been carried by the experienced demography team at the Greater London Authority using their small area model.

The main data inputs were:

- Total population by age/gender (1991-2005 ONS MYE)
- Annual net new homes- actual from mid-2001 to mid-2005  
- forecast from mid-2005 to mid-2016
- Communal establishments, marital status, household representative rates (CLG 2004-based household projections)
- Economic activity by age/gender: 2001 Census
- Projection of UK Labour Force to 2020: ONS Labour Market Trends

#### **Subnational Population Projections:** [Office for National Statistics](#)

The 2004-based long-term subnational population projections were published on 12 October 2006. They project forward the mid-2004 population estimates to give an indication of future trends in population at local authority level from 2004 to 2029.

Being trend based projections, assumptions for future levels of births, deaths and migration are based on observed levels between 2000 and 2004. The projections are produced on a consistent basis across all local authorities in England and show what the population will be if recent trends continue.

Details on [projections methodology](#) can be found on the ONS website. Population projections for 2006 will be released on 23 October 2007.

### **Survey of people in new housing in Oxfordshire:** [Oxfordshire County Council](#)

The new housing survey was carried out by Oxfordshire County Council to provide source data for the planning of local authority services to new housing developments in Oxfordshire.

The sample was selected on the basis that the addresses were new to the Districts Councils' tax registers since April 2001 (the sample excluded student accommodation). The survey included questions on property details and occupants with a return deadline of 23 August 2005.

For further information on the survey of people in new housing in Oxfordshire contact the [Oxfordshire Data Observatory](#).

### **Student numbers by institution:** [Higher Education Statistics Agency](#)

HESA was setup in 1993 following a Government White Paper 'Higher Education: A New Framework', which called for more coherence in higher education statistics.

HESA is now the central source for higher education statistics and has standardized and streamlined the data collection and publication process to become a respected point of reference. It is important to note that the data shows total student numbers, and not students in residence. For further information view the [Higher Education Statistics Agency](#) website.

### **Worker Registration scheme:** [The Home Office](#)

The Worker Registration Scheme began in May 2004 and provides information supplied by citizens from eight of the countries who joined the European Union that month when they obtain a job in the UK. These countries are often referred to as the accession states, or A8.

A8 citizens are required to register once they obtain a job and to re-register for subsequent jobs until they have worked a total of 12 out of 13 months. There is no deregistration information; the data only gives inflows. The data is not cumulative. It is not possible to use it to make assumptions about how long people stay in an area, or how many are working in an area at any one time (Using WRS data at LA level, Audit Commission).

People not counted in these figures include:

- Self employed people
- People working in the informal economy e.g. paid cash in hand
- Adults who have migrated to the UK but are not in paid employment

- Dependents of those who have registered on the scheme are counted separately, but this data is not comprehensive. Individuals who do not bring family members to the country initially may do so once established
- Migrants working for less than one month
- Workers who for other reasons have not registered with the WRS

Full details on the scheme can be found on the [Home Office](#) website.

**National Insurance Registrations:** [Department for Work and Pensions](#)

The Department for Work and pensions has a responsibility for allocating National Insurance Numbers (NINOs) to overseas nationals. The NINO is required for employment/self-employment purposes or to claim benefits and tax credits. This information is stored on the National Insurance Recording System (NIRS).

This data provides a guide to the numbers of non-UK nationals applying for a NINO by country of origin since 2002. All overseas nationals allocated a NINO are included, regardless of their length of stay.

- Local authority counts are based on the most recently recorded address of the NINO recipient.
- Overseas Residents - Foreign nationals who have registered for a NINO but reside abroad.
- 560 cases had no country of origin recorded.
- 100% sample at 17 June 2006 from the NIRS.

It is possible for a subject to register both on the WRS and for a NINO. For this reason the two datasets are analysed separately.

**UK Regular forces:** [Defence Analytical Services Agency \(DASA\)](#)

The UK regular forces distribution report is produced by DASA on a quarterly basis. The figures are for UK regular forces located in the UK. Further details on this information can be found on the [DASA website](#). The term Regular Forces incorporates the Naval Service, the Army and the Royal Air Force.

**Ethnicity forecasts-** Published on the [Oxfordshire Data Observatory](#)

In early 2006, Oxfordshire County Council's Social and Community Services directorate commissioned the Oxfordshire Data Observatory to produce an estimate of the ethnic population of Oxfordshire and Oxford City in 2006 and 2011 (mainly from the 2001 Census survey).

Districts other than Oxford were not included as the numbers of non-white British people resident in those areas were too small to produce reliable estimates.

Experimental population estimates are for mid-year 2006 and 2011 and totals are consistent with the 2005 Oxfordshire County Council small area population forecasts – with minor differences due to rounding.

Note that it has not been possible to include inward migration from new EU countries (including Poland) in these estimates as we had no data on this at a local level at the time.

**Traveller statistics:** Oxfordshire Gypsy and Traveller Services, [Oxfordshire County Council](#)

Oxfordshire Gypsy and Traveller Services deals with unauthorised encampments and manages the six county council owned permanent sites. Further information can be found on the [Oxfordshire County Council](#) website.

**Communal establishment residents:** [Office for National Statistics](#) (extract from ONS website)

The data is a count of all communal establishment residents at the time of the 2001 Census (excluding staff and families of staff living in these establishments). The data is also presented in an urban/remainder classification. For this particular dataset ONS define an urban area as an extent of urban land of at least 20 hectares and at least 1,500 residents at the time of the 2001 Census.

Further information on the data and classification of communal establishments is available through [Neighbourhood Statistics](#).

## 8.2 Additional extracts

**Table 24:** Components of population change for Oxfordshire.

Year	Mid-start year population	Natural change	Net migration and other changes	Mid-end year population
1991/92*	576,100	3,000	1,300	580,400
1992/93	580,400	2,500	-5,800	577,100
1993/94	577,100	2,500	300	579,800
1994/95	579,800	2,400	3,500	585,800
1995/96	585,800	1,800	800	588,500
1996/97	588,500	2,200	2,900	593,600
1997/98	593,600	2,200	1,200	597,900
1998/99	597,000	1,900	4,900	603,800
1999/00	603,800	1,900	1,400	607,100
2000/01	607,100	2,000	-1,900	607,300
2001/02	607,300	1,900	600	609,700
2002/03	609,700	2,000	3,500	615,200
2003/04	615,200	2,200	2,300	619,800
2004/05	619,800	2,500	4,700	626,900

Source: Extract from ONS Population Estimates (\*1991 data is as previously published on 13 Feb 2003, 1992 data is revised in light of the local authority population studies)

**Table 25:** Number of unauthorised gypsy and traveller encampments in Oxfordshire, 2004-2006

	2004	2005	2006
<b>Oxfordshire</b>	<b>148</b>	<b>60</b>	<b>51</b>
Cherwell	46	10	8
Oxford	35	20	10
South Oxfordshire	36	22	19
Vale of White Horse	14	6	2
West Oxfordshire	17	2	12

Source: Oxfordshire Gypsy and Traveller Services

**Table 26:** Oxford City experimental estimates of ethnic population

Ethnic Group	Total people			% change 2001-2011
	2001	2006	2011	
British White	103,794	103,182	102,752	-1.0
Other White	14,120	15,000	15,587	10.4
Mixed	3,306	4,043	4,881	47.7
Caribbean Black	1,677	1,642	1,577	-6.0
Other Black	1,746	1,959	2,133	22.2
Indian	2,354	2,489	2,594	10.2
Pakistani	2,650	2,671	2,709	2.2
Other Asian	1,546	1,634	1,709	10.5
Chinese	2,519	3,152	3,659	45.2
Other	1,799	2,078	2,293	27.5
<b>Total</b>	<b>135,511</b>	<b>137,848</b>	<b>139,894</b>	<b>3.2</b>

Source: Experimental statistics, Oxfordshire County Council Nov 2006. Some figures may vary due to rounding.

**Table 27:** 2004-based Sub-national population projections for selected age ranges - Oxfordshire

<b>Age profile</b>	<b>2004</b>	<b>2009</b>	<b>2019</b>	<b>2029</b>	<b>% change</b>
45-49	40,400	46,600	44,400	43,600	7.9
50-54	37,700	39,200	46,400	38,900	3.2
55-59	38,400	35,900	43,000	41,300	7.6
60-64	29,200	36,000	35,100	42,100	44.2
65-69	25,200	27,200	31,700	38,400	52.4
70-74	21,700	23,300	31,700	31,200	43.8
75-79	18,200	19,100	23,000	27,200	49.5
80-84	14,700	14,600	17,700	25,000	70.1
85+	11,400	14,200	18,500	25,800	126.3

Source: Population projections, ONS, Crown copyright reserved  
(Some figure may not add due to rounding)

## 9 APPENDIX 2- List of briefing papers

	<b>Theme</b>	<b>Broad content</b>
	Oxfordshire Futures	Overview of economic, environmental and social trends and issues affecting the long term future of Oxfordshire
<b>THEME PAPERS</b>		
<b>1</b>	Community Life	Active communities, community-led planning, contribution of volunteers
<b>2</b>	Community Safety	Community safety, crime, fear of crime
<b>3</b>	Economy	Employment, income, businesses, change in key industry sectors
<b>4</b>	Children & Young People	Needs of children & young people
<b>5</b>	Learning and skills	Skills for the economy; skills for individuals
<b>6</b>	Environment	Climate change; resources (including waste, water, energy, air quality, countryside, land)
<b>7</b>	Health, care and wellbeing	Lifestyles, older people, long term conditions, vulnerable people
<b>8</b>	Housing	Affordability, housing for vulnerable groups, eco-homes
<b>9</b>	Population and migration	Ageing population, long term and short term migration trends
<b>10</b>	Access to services and travel	Road congestion, accessibility, safer roads, air quality, street environment
<b>11</b>	Recreation, leisure and culture	Participation in culture, sport, leisure activities, internet
<b>12</b>	Spatial Oxfordshire	South East plan, Local Development Frameworks, planning policy; rural, market towns, urban
<b>SUPPLEMENTARY PAPERS</b>		
<b>S1</b>	Community-led plans and their potential contribution to strategic planning	by Gloucestershire University (May 2007) Analysis of the priorities from 30 community-led parish and market town plans completed in past 5 years in Oxfordshire
<b>S2</b>	Priorities from Oxford Area Action plans	by Oxford City Council (July 2007) Priorities from six Oxford City area action plans
<b>S3</b>	Oxfordshire Rural Framework (2007-2010)	by Oxfordshire Rural Forum (July 2007) Challenges and priorities for rural Oxfordshire