

# oxfordshire CYPB

children & young people's board



# Newsletter

This newsletter is launched at the end of the first busy year for Oxfordshire's Children's Trust arrangements. It will be produced quarterly and aims to keep people working with Children and Young People updated on progress with the Children and Young People's Plan. There will be updates from the Children and Young People's Board and Partnership and also regular factsheets for professionals working in localities – so look out for these too!

**For further information please contact:**

ChildrensTrust@oxfordshire.gov.uk  
01865 810560

# Common Assessment Framework (CAF) and Locality Working

Every Child Matters highlighted the need for local authorities and partners to work together more effectively in local areas to provide high quality services for children, young people and families.

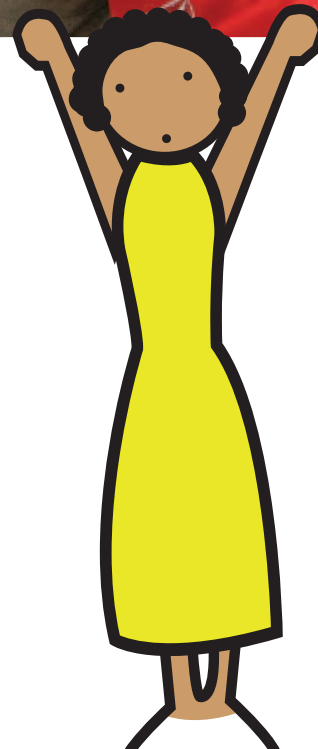
Children, young people and families have told us that they would like services to:

- Put children, young people and families at the centre and involve them in the decision making.
- Be coordinated across agencies with one lead contact person to help them navigate the system.
- Have fewer assessments, reduce duplication and give more practical support.
- Be available earlier – before things get really bad.
- Be organised so that services are easy to access locally.

## Oxfordshire has embarked on an ambitious programme.

To date we have

- Adopted an agreed Vision and Values Statement to underpin the new ways of working
- Developed a practitioner’s Toolkit with an agreed information sharing protocol
- Implemented the Common Assessment Framework, Team Around the Child/Young Person and Lead Professional. These are processes designed to ensure children/young people and their families receive early support and help with one professional coordinating that support
- Developed 13 Locality Support Services teams across three areas.



North	Central	South
<ul style="list-style-type: none"> <li>• Banbury</li> <li>• Bicester/Kidlington</li> <li>• Witney/Eynsham/</li> <li>• Woodstock</li> <li>• Carterton/Burford</li> <li>• Chipping Norton</li> </ul>	<ul style="list-style-type: none"> <li>• Headington/Wheatley</li> <li>• Cowley/Iffley</li> <li>• North Oxford/Cumnor Botley</li> <li>• Oxford South East</li> <li>• Didcot</li> </ul>	<ul style="list-style-type: none"> <li>• Thame/Watlington</li> <li>• Abingdon/Berinsfield</li> <li>• Henley/Sonning Common/ Woodcote/Wallingford</li> <li>• Wantage/Faringdon/Grove</li> </ul>

- All agencies have now been allocated named staff into every locality and a service directory has been produced that names all staff members and describes their roles.
- Eleven Locality Coordinators are in place to coordinate and support practitioners to work as a multi-agency team around individual children. Two further coordinators will be in place by September 07.
- A two day multi-agency programme has been delivered to over 1200 practitioners on Common Assessment Framework, Team Around the Child, Lead Professional.
- A DVD has been produced 'On the Receiving End'. This provides the views of children, young people, parents and carers about the services they have received. This has been used in all the training events to ensure that service users' views are fully taken into account throughout the training process.
- Evaluation arrangements have been agreed and a number of pilot programmes are in progress.
- Three Joint Area Management Groups have been formed, North, Central and South. The key role of the Joint Area Management Groups is to ensure that the integration of services and implementation of Common Assessment Team Around the Child, Lead Professional role is embedded and fully implemented in the 13 locality teams.
- 60 Common Assessment Frameworks are in progress, 35 Teams around the Child are in progress and 24 Lead Professionals identified.
- A strategy and framework document has been produced to develop local Children and Young People's Partnerships in 10 areas initially. These partnerships based on extended services in and around schools will enable local partners to work collaboratively to focus on planning and development of early preventative services for vulnerable children and young people. Locality data profiles will be produced for each partnership. This data will give each partnership information about the local area and can be used to underpin the monitoring of outcomes and targeting of resources for vulnerable children and families in the local area.

***The feedback from children, young people and their families has been very positive. Parents have described the process as "supportive" and "helpful". Feedback from professionals has also been positive.***

**There is still a great deal of work to do**

- By April 2008 it is expected that electronic systems will be in place for the Common Assessment Framework and Contact Point.
- We need to evaluate these new processes to ensure that these new ways of working are really making a difference for children and families.
- We need to develop a Workforce Strategy which ensures that staff have access to training to enable them to work preventatively in a more integrated way.

We have made a good start. We now need to continue the implementation plans and embed the Common Assessment Framework, Team Around the Child, Lead Professional process to ensure that support for vulnerable children and young people is accessed earlier; is coordinated and places for children, young people and their families are at the centre of decision making.

**For further information, please contact:**

Maria Godfrey, Service Manager – Locality Working & Integrated Support Services at:  
 Maria.Godfrey@oxfordshire.gov.uk  
 Telephone: 01865 815453.



# Joint Area Review of Oxfordshire's Children's Services

In December 2007, as part of a three year rolling programme across all English unitary and upper tier shire counties authorities. Oxfordshire will have a Joint Area Review (JAR), conducted by Ofsted, which will evaluate the way local services, taken together, contribute to the outcomes achieved by Children and Young People growing up in Oxfordshire.

The JAR will focus on the extent to which services contribute to children and young people being healthy, staying safe, enjoying and achieving, making a positive contribution and achieving economic well-being (the five Every Child Matters outcomes). The review will pay particular attention to any areas deemed to be weak and to safeguarding, looked after children and children and young people with learning difficulties and/or disabilities.

## Our aim

To demonstrate:

- What we do well and acknowledge development areas and actions being taken
- How we've improved outcomes for Children and Young People in Oxfordshire.

## Outcome

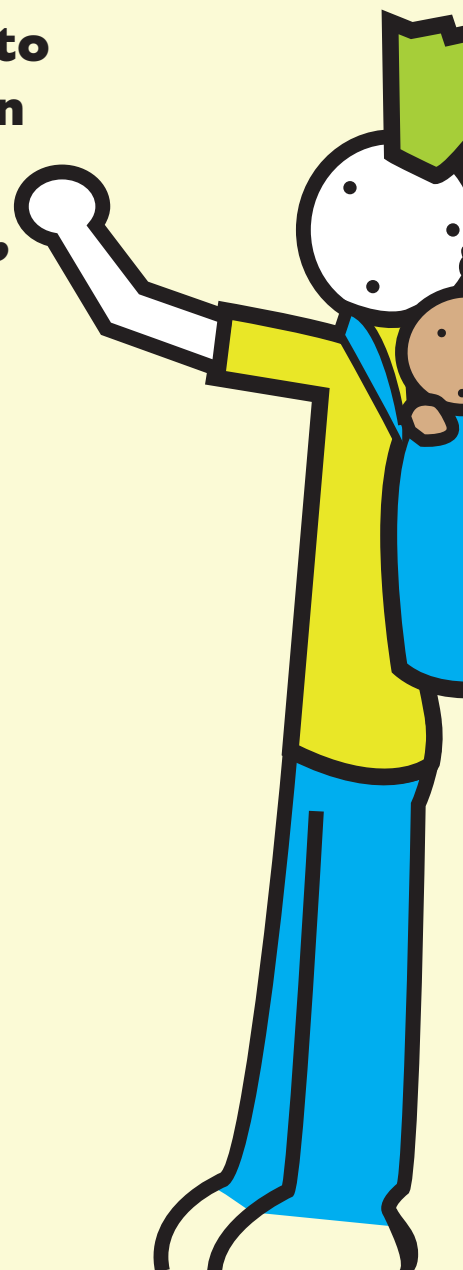
Following the inspection, a report will be published by Ofsted outlining their findings at some point early in 2008. Judgements will be made using a four point scale; 4 – Outstanding; 3 – Good; 2 – Adequate; and 1 – Inadequate.

We will produce an action plan showing how we will strive together to further improve these areas, deemed by Ofsted to need further development.

**“The review will focus on the extent to which services contribute to children and young people being healthy, staying safe, enjoying and achieving, making a positive contribution and achieving economic well-being”**

The number and range of additional investigations will be selected on the basis of evidence from existing inspections, including the most recent Annual Performance Assessment (APA), which will be undertaken for Oxfordshire during the week of 17th – 21st September 2007.

Inspectors will judge the contribution made by each service area and make specific judgements about the quality management and leadership of local partnerships working to improve outcomes for children and young people.



## So what are the implications for Partners?

*“Partners provide services that contribute to improving outcomes for children and young people. These services will be covered in the review, usually through fieldwork in the local area or case tracking, but also when they make a contribution to a specific investigation selected for scrutiny. The JAR will also pay particular attention to the effectiveness of the arrangements to cooperate with partners and the extent to which that cooperation contributes to improving outcomes for children and young people.*”

*JAR will evaluate the contribution of services provided by the voluntary and community sector to the outcomes achieved by children and young people. Judgements will be made on the extent to which voluntary and community organisations are engaged with other partners in decisions about the strategic development of provision, and how far appropriate action has been taken to build on the capacity of voluntary and community sector providers to provide high quality services that offer value for money. Judgements will include the contribution of voluntary and community services identified through case tracking and studies within local neighbourhoods.”*

Taken from the Ofsted Guidance, Joint Area Review of Children's Services from April 2007

### **Further information can be found on the Ofsted website or by contacting:**

Siân Rodway, Project Manager – CA/JAR  
sian.rodway@oxfordshire.gov.uk  
Telephone: 01865 815118



# Children's Trust Arrangements

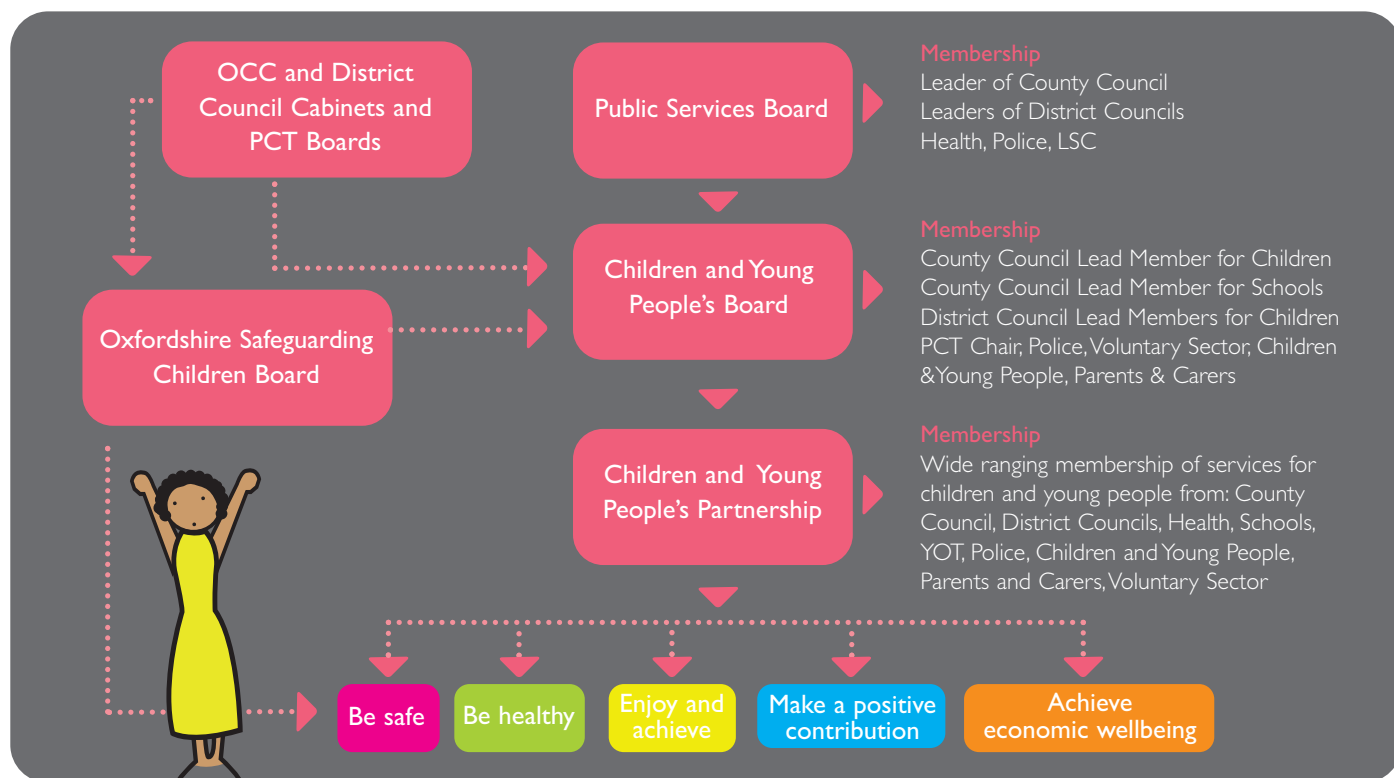
In the past year Oxfordshire's Children's Trust arrangements have evolved from being a good idea on a piece of paper to providing, for the first time a single overarching Board that brings together the key decisions makers for services for Children and Young people in Oxfordshire.

The Children and Young People's Board has met regularly to oversee progress in implementing the Children and Young People's Plan. Key decisions have included:

- Joint agency commitment to the strategy for engaging children and young people in the development of services
- Endorsement of a joint agency Play Strategy for the under 14s (more details in this newsletter)
- Allocation of ring fenced funding for teenage pregnancy following the ending of the teenage pregnancy grant
- Commitment to work together to deliver services for children and young people in 13 multidisciplinary locality teams (further details in this newsletter)

This next year will bring a new set of challenges for the Children and Young People's Board including:

- Overseeing the Joint Area Review of service in December 2007 (further details in this newsletter)
- Overseeing the Local Area Agreement funding for the Children and Young People's targets
- Developing robust working links with other strategic groups, in particular Supporting People Board, the Health and Wellbeing Partnership and the Sustainable Communities Strategy Group
- Building upon arrangements for securing the participation of Children and Young People as grant funding comes to an end in 2008
- Strengthening the capacity to engage with schools and GPs as key partners in the delivery of integrated universal services
- Evaluating the Voluntary Sector Panel (VSP) to make sure that we can get sustainable and effective voluntary sector engagement in the longer term



For further information, visit [www.oxfordshire.gov.uk/cypboard](http://www.oxfordshire.gov.uk/cypboard) or contact:

ChildrensTrust@oxfordshire.gov.uk 01865 810560

# Raising Standards and Improving Outcomes for children under five and their families

## **The Childcare Act 2006 contains three principle duties for local authorities:**

- to improve the well-being of children under five
- to secure sufficient childcare for children of working parents; and
- to provide information, advice and assistance.

## **The draft statutory guidance(\*) sets out a vision for future services where**

***“parents, from the time they know they are expecting a baby, to see a coherent pattern of accessible child health, early years provision and family support services ahead of them”***

Services for young children should place the wellbeing of children at the centre of their planning and “children should feel confident in their relationships”. They should ensure the best start in life for children and facilitate social mobility through a reduction in the inequalities, which currently exist, and between rich and poor.

With the introduction of the Early Years Foundation Stage from September 2008 there will be a focus on quality improvement – to ensure all children get the best possible early years provision, whatever setting they attend.

The Local Authority is required to work with the Strategic Health Authority, Primary Care Trust and Jobcentre Plus to plan and develop services. In Oxfordshire, this will be done through the Early Years Development and Childcare Partnership, under the umbrella of the Children’s Trust arrangements and the Children and Young People’s Partnership Board.

Front line services will be delivered through a range of partners and teams – schools, private, voluntary and independent childcare providers, outreach services, family support and health service teams.

The Children’s Centre programme is central to these developments – with 14 designated so far and a further 15 to be designated by March 2008. Phase 3 (2008 – 2010) should enable all areas of Oxfordshire to be covered by Children’s Centre services, which are integrated services providing or signposting parents to the range of early education, childcare, parenting support and health services they might need.

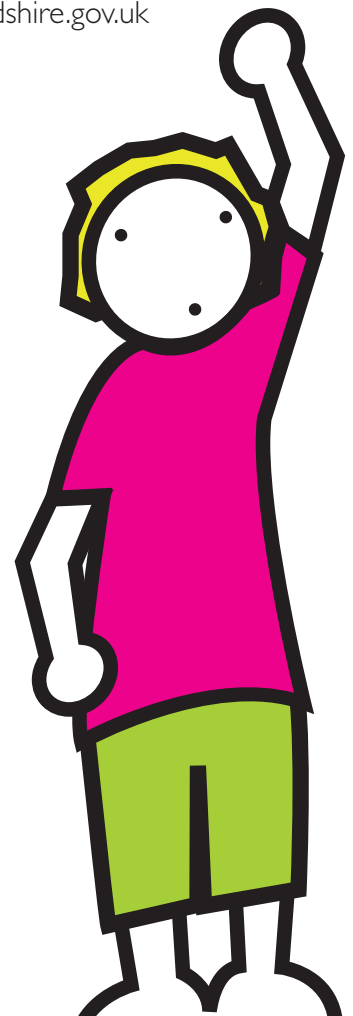
(1\*) Ref: Raising Standards, Improving Outcomes: Draft Statutory Guidance on the Early Years Outcomes Duty [www.dfes.gov.uk/consultations](http://www.dfes.gov.uk/consultations)

## **For more information please contact:**

Amanda Smith, Assistant Head – Early Years and Family Support  
[Childrenscentres@oxfordshire.gov.uk](mailto:Childrenscentres@oxfordshire.gov.uk) Telephone: 01865 456743

or

Annie Davy, Head of Early Learning and Childcare  
[Earlyyearseducation@oxfordshire.gov.uk](mailto:Earlyyearseducation@oxfordshire.gov.uk)  
Telephone: 01865 815493



# oxfordshire

children & young people's board



## Play Charter

This Play Charter has been designed by six very playful Young Members of Oxfordshire Play Partnership who have helped develop the Oxfordshire Play Strategy.

The strategy...“is like a funnel to bring everything together...otherwise you'd be floating off doing your own stuff”...“It's a giant play organiser which puts things in place and stops chaos”.

### Inclusion

Playing alone or being included, please make play spaces available for disabled and non-disabled children and young people

### Taking risks

Is a really important part of play, not following the rules, but going by your instincts and free will, safely within reason and within the law.

### Safety

If you do risky stuff, you learn about safety which helps you from making mistakes when you're older

### Urban or rural

Please make it easier for us to play in any area, the streets can be as fun as an organised playground, but natural spaces are the best!

### In organised play

Play should still be led by us – adults should only step in when there is a safety problem

### Children know what children want

So please consult us!

“Play is in your heart, it's about freeing you from limits and boundaries”.

(boy 12 years old)

“One of the best things about play is that you can go somewhere far into the future or somewhere far in the past”.

(boy 11 years old)



Alternative formats of this publication are available on request. These include other languages, large print, Braille, audio cassette, computer disk or email. Please telephone the Children's Trust on 01865 810560.