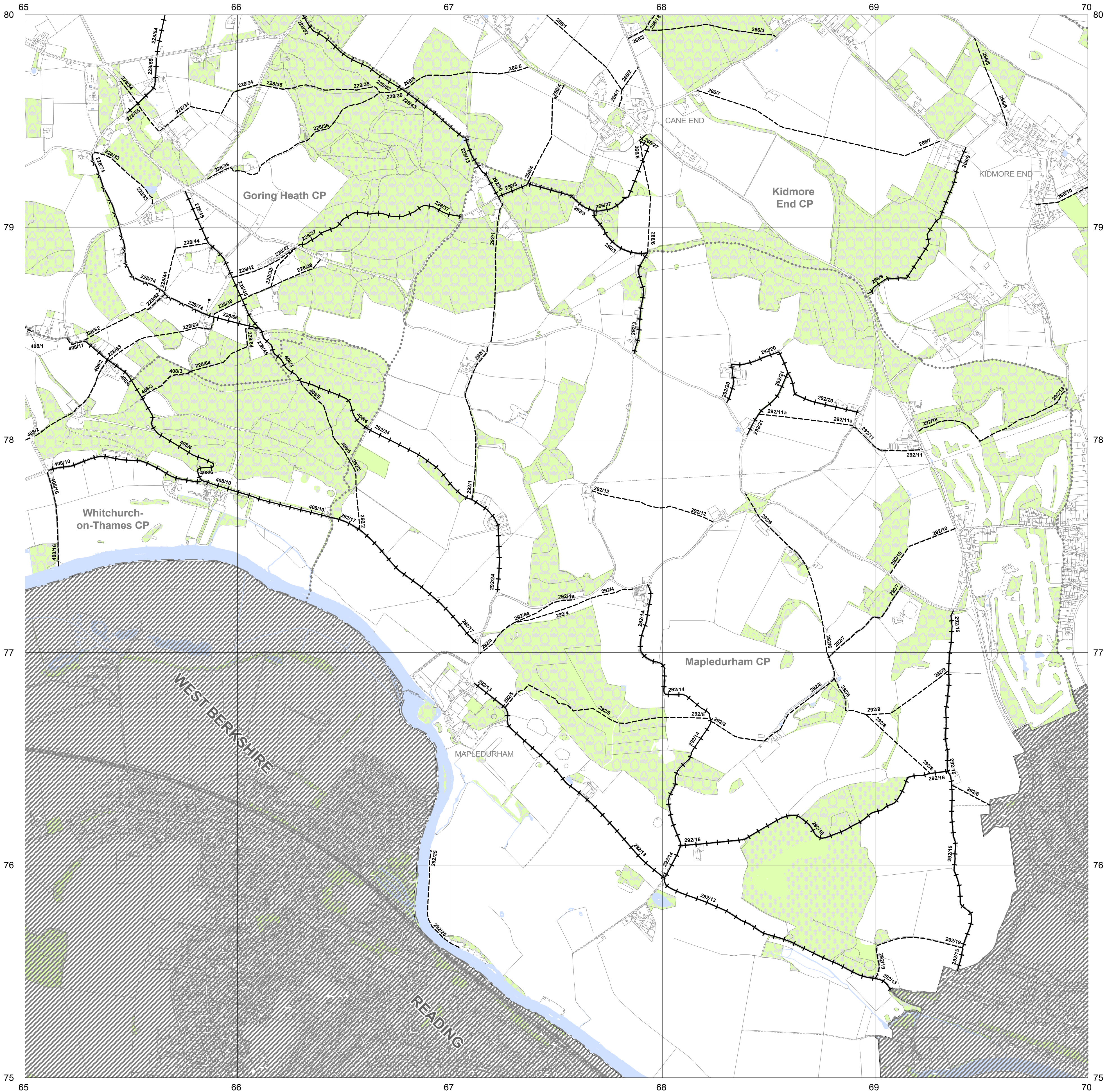


# Definitive Map of Public Rights of Way for Oxfordshire

## Relevant Date: 21<sup>st</sup> February 2006

SHEET SU 67 NE



**SHEET SU 67 NE**  
**Scale 1:10,000**

To be read in conjunction with the Definitive Statement.  
The Definitive Map and Statement is conclusive evidence in law that the rights shown on the Map existed at the relevant date, but this is without prejudice to the possible existence of other rights not shown on the Map (see s56 Wildlife & Countryside Act 1981).

This map is reproduced from Ordnance Survey material with the permission of Ordnance Survey on behalf of the Controller of Her Majesty's Stationery Office © Crown copyright.  
Unauthorised reproduction infringes Crown copyright and may lead to prosecution or civil proceedings. (LA076805) (2006).

Based on Ordnance Survey map data 2003.

**KEY:**

- Public Footpath
- + + + + + Public Bridleway
- x - x - x Road Used as Public Path  
(To be redesignated under Countryside & Rights of Way Act 2000, section 47, to Restricted Byway.)
- v - v - v Byway Open to all Traffic
- County Boundary
- - - - - District Boundary
- ..... Parish Boundary
- (where shown) Right of Way either:  
crosses administrative boundary,  
reaches terminus or  
changes status.

SU 68 SW	SU 68 SE	SU 78 SW
SU 67 NW	SU 67 NE	SU 77 NW
	SU 67 SE	SU 77 SW

For further information please contact:

Oxfordshire County Council  
Environment and Economy  
Rights of Way Office  
Countryside Service



Telephone: 01865 810808

 **OXFORDSHIRE COUNTY COUNCIL**  
[www.oxfordshire.gov.uk](http://www.oxfordshire.gov.uk)