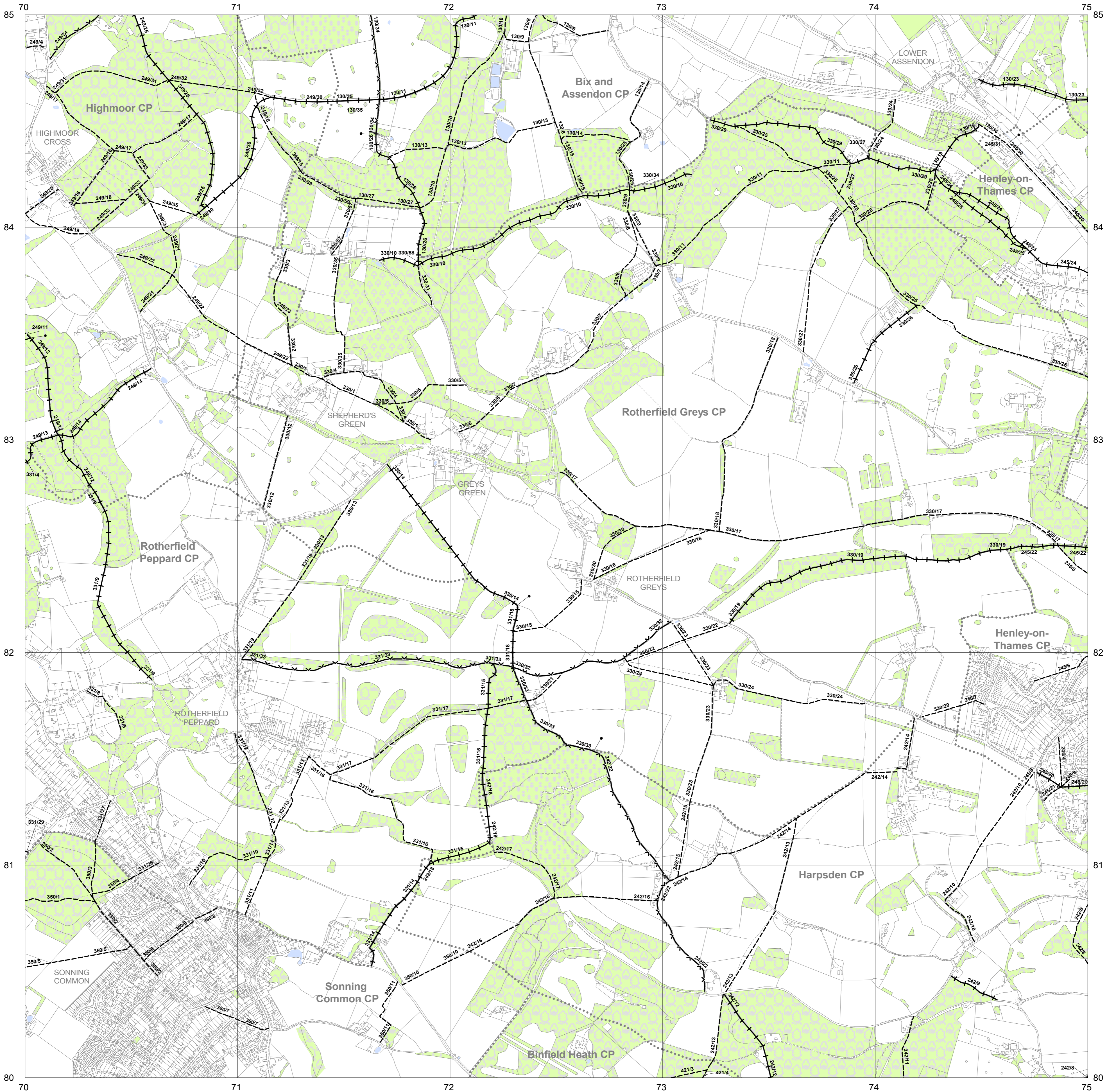


Definitive Map of Public Rights of Way for Oxfordshire

Relevant Date: 21st February 2006

SHEET SU 78 SW



SHEET SU 78 SW
Scale 1:10,000

To be read in conjunction with the Definitive Statement.

The Definitive Map and Statement is conclusive evidence in law that the rights shown on the Map existed at the relevant date, but this is without prejudice to the possible existence of other rights not shown on the Map (see s56 Wildlife & Countryside Act 1981).

This map is reproduced from Ordnance Survey material with the permission of Ordnance Survey on behalf of the Controller of Her Majesty's Stationery Office © Crown copyright. Unauthorised reproduction infringes Crown copyright and may lead to prosecution or civil proceedings. (LA076805) (2006).

Based on Ordnance Survey map data 2003.

KEY:	
	Public Footpath
	Public Bridleway
	Road Used as Public Path (To be redesignated under Countryside & Rights of Way Act 2000, section 47, to Restricted Byway.)
	Byway Open to all Traffic
	County Boundary
	District Boundary
	Parish Boundary
	(where shown) Right of Way either: crosses administrative boundary, reaches terminus or changes status.

SU 68 NE	SU 78 NW	SU 78 NE
SU 68 SE	SU 78 SW	SU 78 SE
SU 67 NE	SU 77 NW	SU 77 NE

For further information please contact:

Oxfordshire County Council
Environment and Economy
Rights of Way Office
Countryside Service



Telephone: 01865 810808



OXFORDSHIRE
COUNTY COUNCIL
www.oxfordshire.gov.uk