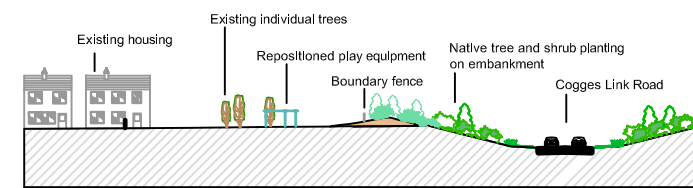
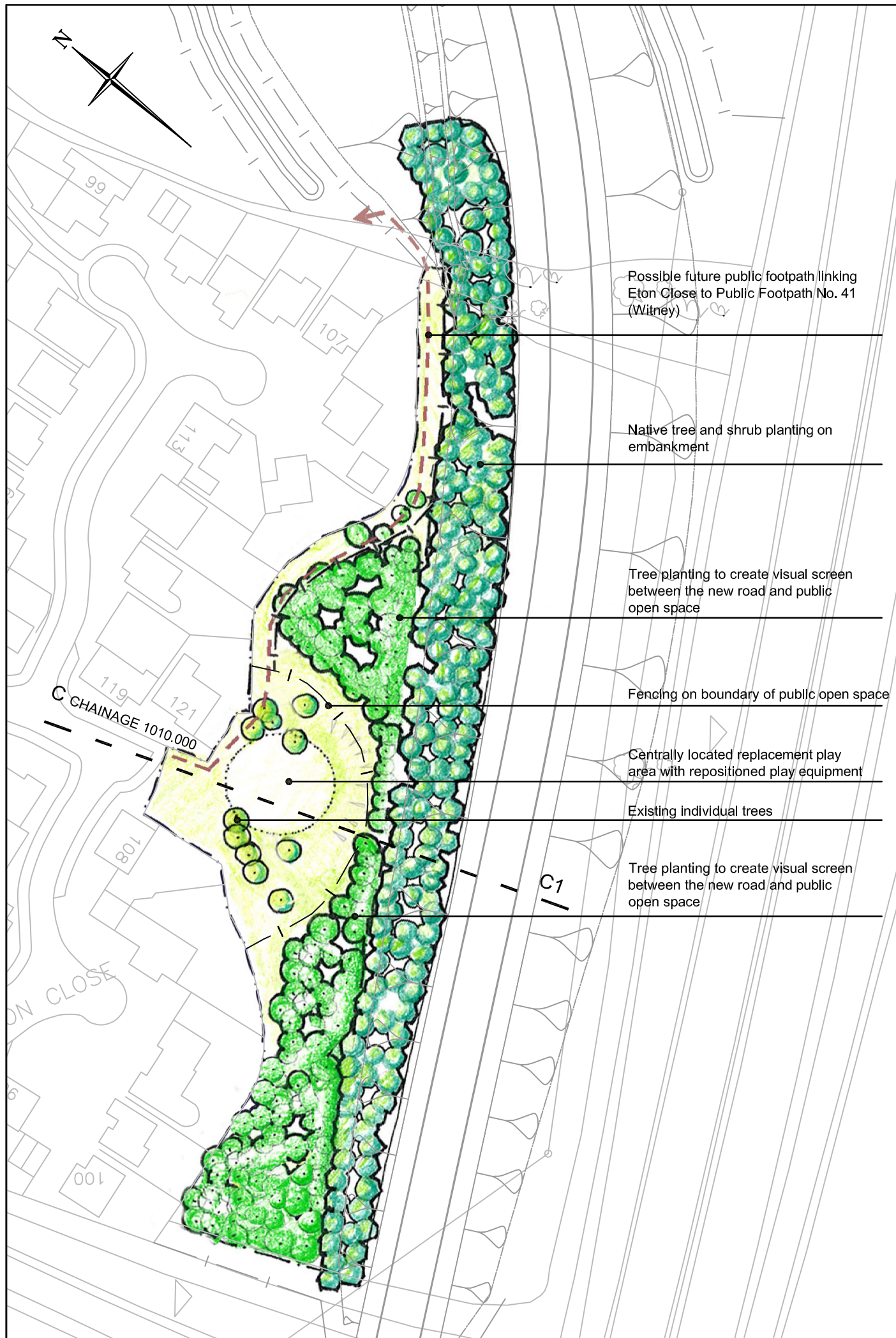


Cogges Link Public Open Space

Retained Public Open Space at Eton Close

- Illustrative Layout



Section C - C1
CHAINAGE 1010.000



Existing play equipment to be repositioned to layout to be agreed with Witney Town Council

Reproduced from the Ordnance Survey material with the permission of Ordnance Survey on behalf of the Controller of Her Majesty's Stationery Office © Crown copyright. Unauthorized reproduction infringes Crown copyright and may lead to prosecution or civil proceedings. 1000023343 (2007).
Do not scale this drawing

JE JACOBS
Jacobs UK Ltd, Park House, Haddenham Business Park, Thame Road, Haddenham, Aylesbury, Bucks. HP17 8LB
Telephone (01844) 296200
FAX (01844) 296201



Project
COGGES LINK ROAD

Title
**Retained Public Open Space at Eton Close
Illustrative Layout**

Scale N.T.S.	Drawn By CTB	Checked By ND	Approved By JM
	Date 08.04.08	Date 11.04.08	Date 11.04.08

Clients Ref

Drawing Number
FIGURE 23