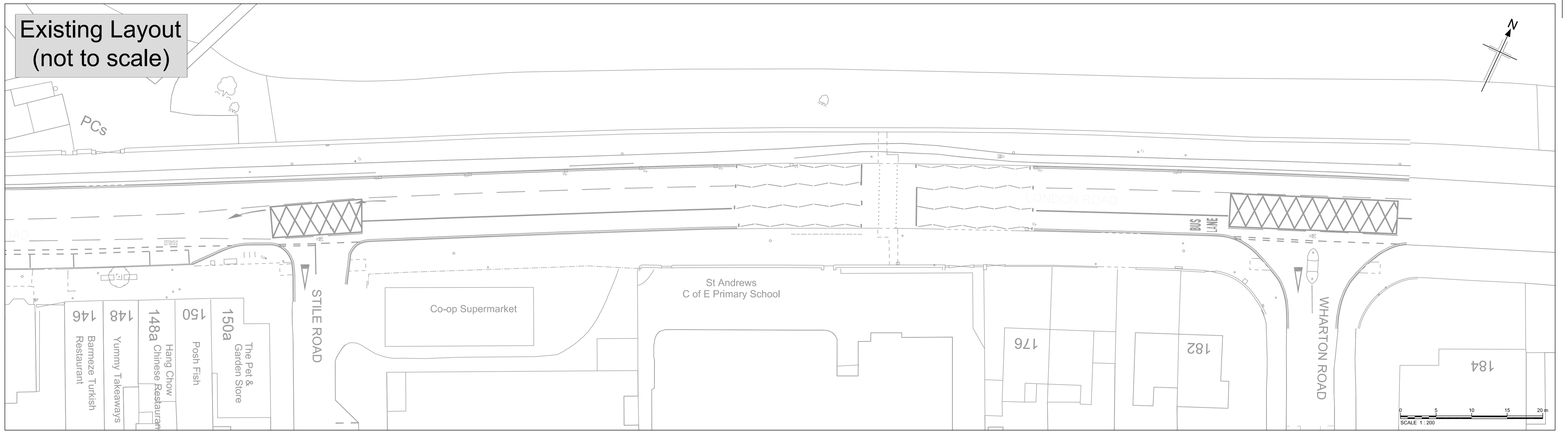
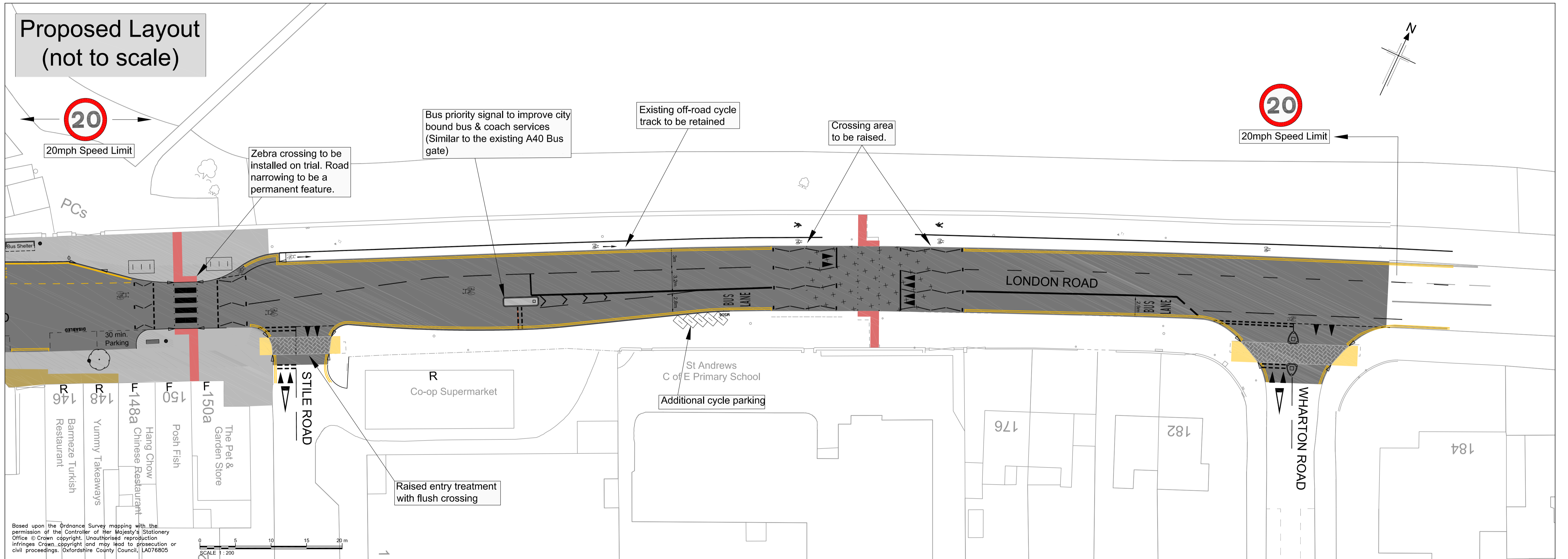


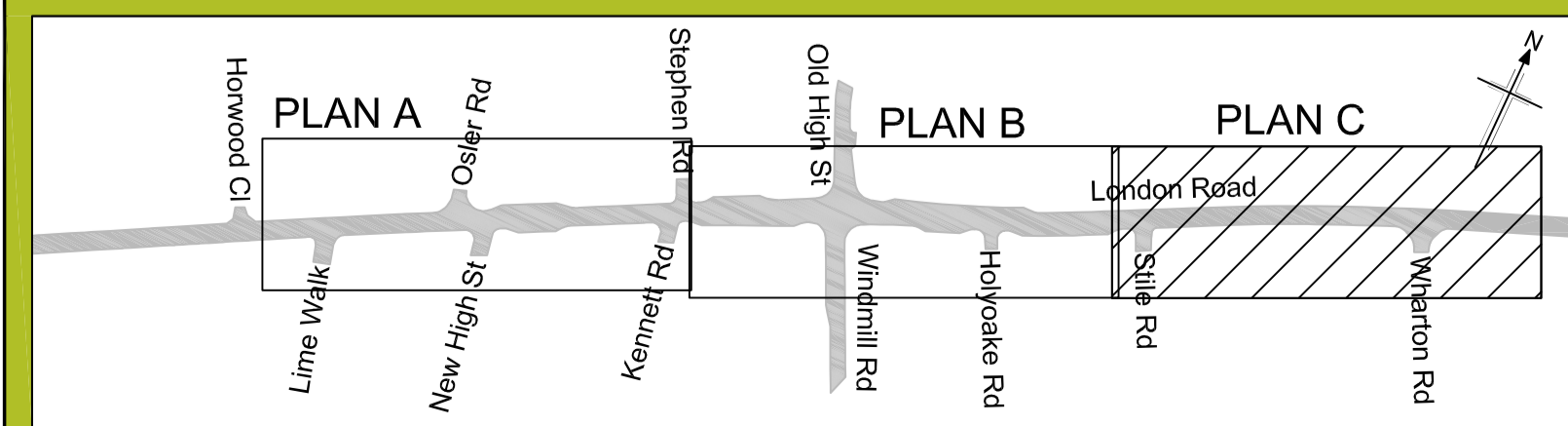
**Existing Layout
(not to scale)**



**Proposed Layout
(not to scale)**



Based upon the Ordnance Survey mapping with the permission of the Controller of Her Majesty's Stationery Office © Crown copyright. Unauthorised reproduction infringes Crown copyright and may lead to prosecution or civil proceedings. Oxfordshire County Council, LA076805



**London Road Improvement Scheme
Osler Road to Wharton Road
PROPOSED LAYOUT PLAN C**

KEY:

- | | | | | | | | |
|---|----------------------------------|---|--|---|--|---|----------------------|
| R | Rear loading access to property | ■ | New carriageway surface | ■ | Tactile paving (uncontrolled crossing) | □ | Bench (without back) |
| F | Front loading access to property | ■ | Raised junction | ■ | Tactile paving (controlled crossing) | □ | Bench (with back) |
| □ | Cycle rack | ■ | Improved footway paving and street furniture | ■ | Proposed Tree | □ | Bench (wall mounted) |
| ◆ | Bus stop flag | ■ | Grey raised 'imprint' carriageway surface | ■ | Existing tree | □ | Feature bench |
| | | ■ | Private forecourt | ■ | Existing tree to be removed | ● | Litter Bin |

This drawing is not to be used in whole or part other than for the intended purpose and project as defined on this drawing. Refer to the contract for full terms and conditions.