

## WELCOME

Welcome to this exhibition of the proposed new A415 Thames crossing at Newbridge.

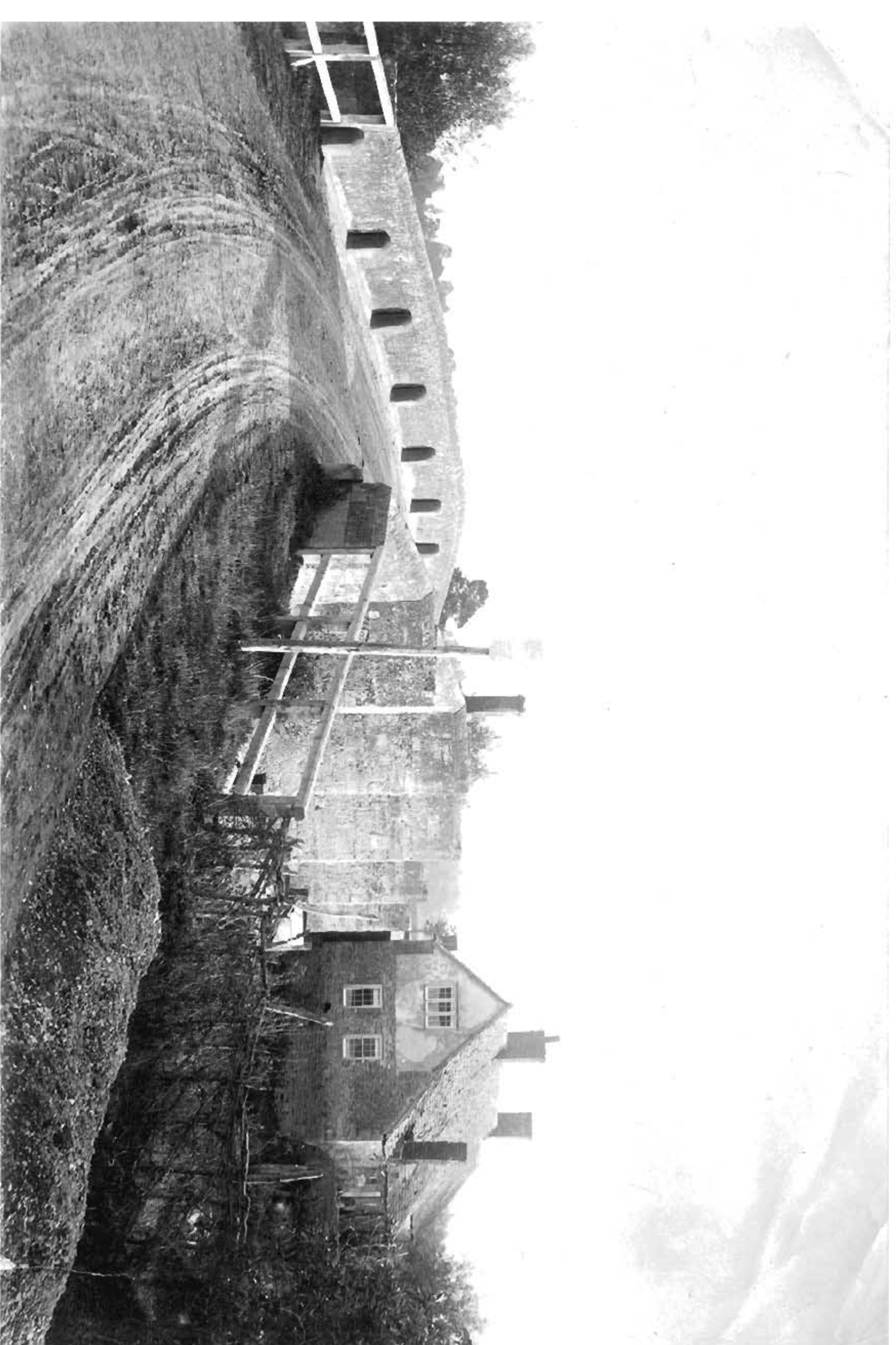
Please pick up a leaflet at the entrance to the exhibition and take time to have a look at each of the exhibition panels. They are intended to explain why we think a new Thames crossing is required, where we think it should be built, how it links to the existing A415 and also how the new crossing could look.

We would like to know what you think about our proposals so at the back of the leaflet you will find a questionnaire. You can fill in the questionnaire now and place it in the box provided on your way out or you can complete it later and post it back to us using the freepost address provided.

Alternatively you can go to the Oxfordshire County Council website [www.oxfordshire.gov.uk/newbridge](http://www.oxfordshire.gov.uk/newbridge) where you can find the plans, other background information and an on-line feedback form.

Staff at the exhibition will be pleased to answer any questions you may have.

Parents and guardians, please be responsible for your children at all times.



Photograph taken around 1900 looking south across Newbridge



Photograph taken 2009 looking south across Newbridge

## INTRODUCTION

The A415 currently crosses the River Thames over Newbridge, a 13th century, six span, masonry gothic arch bridge that is thought to be the oldest complete and original bridge crossing the River Thames today.

The load carrying capacity of Newbridge has been assessed structurally and found to be very low. We have also concluded that Newbridge should not be reconstructed or strengthened due to its historic importance, the significance of which has been recognised and statutorily protected by being designated a Scheduled Ancient Monument.

As an interim measure we have imposed an 18 tonne structural weight limit and are closely monitoring Newbridge's condition.

Please now take time to look at the following exhibition panels which give further information regarding:

- Panel 2 Problems with Newbridge.
- Panel 3 Why we can't strengthen Newbridge.
- Panel 4 Why A415 traffic can't be diverted elsewhere.
- Panel 5 The preferred route selection process.
- Panel 6 Details of the proposed new route.
- Panel 7 Computer generated illustrations of the two proposed bridge options.
- Panel 8 Construction details for the two proposed bridge options.